



Customer information packet

VECP82334T-4

20HP, 1760RPM, 3PH, 60HZ, 256TC, 0964M, TEFC, F
ELECTRIC MOTOR WHOLESAL.COM
Class - CLI GP A,B,C,D
Division - Division II

Specifications

Enclosure	TEFC
Frame	256TC
Frame Material	Iron
Frequency	60.00 Hz
Motor Letter Type	Three Phase
Output @ Frequency	20.000 HP @ 60 HZ
Phase	3
Synchronous Speed @ Frequency	1800 RPM @ 60 HZ
Voltage @ Frequency	460.0 V @ 60 HZ
XP Class and Group	CL I GP A,B,C,D
XP Division	Division II
Agency Approvals	CCSA US CSA EEV NEMA PREMIUM UR
Ambient Temperature	40 °C
Auxillary Box	No Auxillary Box
Auxillary Box Lead Termination	None
Base Indicator	No Mounting
Bearing Grease Type	Polyrex EM (-20F +300F)
Blower	None
Constant Torque Speed Range	1.3
Current @ Voltage	23.000 A @ 460.0 V
Design Code	B
Drip Cover	No Drip Cover
Duty Rating	CONT
Efficiency @ 100% Load	93.0 %
Electrically Isolated Bearing	Not Electrically Isolated
Feedback Device	NO FEEDBACK
Front Face Code	Standard
Front Shaft Indicator	None
Heater Indicator	No Heater

Part detail

Revision	S
Type	AC
Mech. spec.	09K208
Base	
Status	PRD/A
Elec. spec.	09WGT417
Layout	09LYK208
Eff. date	07-01-2022
CD Diagram	CD0006
Poles	04
Leads	3#12
Proprietary	False
Created date	06-30-2017

High Voltage Full Load Amps	23.0 a
Insulation Class	F
Inverter Code	Inverter Duty
KVA Code	G
Lifting Lugs	Standard Lifting Lugs
Locked Bearing Indicator	Locked Bearing
Max Speed	2700 rpm
Motor Lead Exit	Ko Box
Motor Lead Quantity/Wire Size	3 @ 12 AWG
Motor Lead Termination	Ring Terminals
Motor Standards	NEMA
Motor Type	0964M
Mounting Arrangement	F1
Number of Poles	4
Overall Length	25.28 IN
Power Factor	87
Product Family	Chem Process S/P 32-8 IEEE 841
Pulley End Bearing Type	Ball
Pulley Face Code	C-Face
Pulley Shaft Indicator	Standard
Rodent Screen	None
Service Factor	1.15
Shaft Diameter	1.625 IN
Shaft Extension Location	Pulley End
Shaft Ground Indicator	No Shaft Grounding
Shaft Rotation	Reversible
Shaft Slinger Indicator	No Slinger
Speed	1760 rpm
Speed Code	Single Speed
Starting Method	Direct on line
Thermal Device - Bearing	None
Thermal Device - Winding	None
Vibration Sensor Indicator	No Vibration Sensor
Winding Thermal 1	None

Winding Thermal 2

None

XP Temp Code

T3C

Nameplate

NP4332

STK.NO.	VECP82334T-4	P/N		ENCLOSURE	TEFC
SPEC.	09K208T417	CC	010A	FRAME	256TC
HP	20	CLASS	F	HZ	60
RPM	1760	RPM MAX	2700	ODE BRG	6309
VOLT	460	PH	3	DE BRG	6309
AMP	23	DES	B	D.E. BRG.	45BC03X30X
RATING	40C AMB-CONT	PH	3	D.E. BRG.	45BC03X30X
NEMA-NOM-EFF	93	KVA-CODE	G	O.D.E. BRG.	45BC03X30X
G.MIN.EFF	91.7	MOTOR WEIGHT	355	GREASE	POLYREX EM
TEMP CODE	T3C	MAX. KVAR	3.6	BLANK	
TEMP =	160	# OF ROTOR BARS	40	SER.F.	1.15
CT HZ FROM	0-	# OF STATOR SLOTS	48	IP	56
HTR-VOLTS		PF	87	INV.TYPE	PWM
HTR-AMPS		INVERTER-TEMP-CODE	180		
HTR-WATTS		C HP FR	60	C HP TO	90
MAX. SPACE HEATER TEMP.		CT HZ TO	60		
VT HZ FROM	0			VT HZ TO	60

Parts list

Part number	Description	Quantity
SA341021	SA 09K208T417	1.000 ea
RA329391	RA 09K208T417	1.000 ea
37FN3002B02	EXFN, PLASTIC, 7.50 OD, 1.503 ID	1.000 ea
HW1002A63	WASHER, 5/8 HI-COLLAR SPRLCKWASHER	1.000 ea
09CB1002A12P	KOBX W/1.25 NPT LEAD HOLE & 2.38 MTG HOL	1.000 ea
09GS1010	GASKET, DWG, LEADWIRE SEPERATOR	1.000 ea
51XW2520A12	.25-20 X .75, TAPTITE II, HEX WSHR SLTD	4.000 ea
WD1000B16	T&B CX70TN OR L70P TERMINAL LUG	1.000 ea
10XN2520K06	1/4-20 X 3/8" HX HD SCREWGRADE 5, ZINC P	1.000 ea
HW1001A25	LOCKWASHER 1/4, ZINC PLT .493 OD, .255 I	1.000 ea
HA3400A39	STUD- 3/8-16 X 6.44 OAL HEX	4.000 ea
HW1001A38	LOCKWASHER 3/8, ZINC PLT .688 OD, .382 I	4.000 ea
12CB1503P	CONDUIT BOX LID, CAST W/EPOXY PRIMER	1.000 ea
HW4500A20	1/8NPT SL PIPE PLUG	1.000 ea
HA4017A08	.125X3.50 GREASER EXTEN.	1.000 ea
HA4017A10	1/8X1.25 GREASE EXT (F/S)	1.000 ea
HW4019A01	PIPE COUPLING 1/8 NPT,STEEL,ZINC COATING	1.000 ea
HW4601A61	INPRO SEAL #1698-A-17120-0, VBXX 309 BRG	1.000 ea
HW5100A11	W3917-042 WVY WSHR (WB)	1.000 ea
10XN2520K36	1/4-20 X 2.25" HX HD SCRWGRADE 5, ZINC P	4.000 ea
09EP1318A01P	ENDPLATE, MACH EPOXY PRIMER	1.000 ea
10XN3816K28	3/8-16 X 1.75 HEX HD CAP SCREW, GRADE 5	4.000 ea
HW1001A38	LOCKWASHER 3/8, ZINC PLT .688 OD, .382 I	4.000 ea
HW4500A20	1/8NPT SL PIPE PLUG	1.000 ea
HW4601A61	INPRO SEAL #1698-A-17120-0, VBXX 309 BRG	1.000 ea
10XN2520K36	1/4-20 X 2.25" HX HD SCRWGRADE 5, ZINC P	4.000 ea
XY3816A12	3/8-16 FINISHED NUT	4.000 ea
HW1001A38	LOCKWASHER 3/8, ZINC PLT .688 OD, .382 I	4.000 ea
12GS1002	GASKET, CONDUIT BOX LID, NEOP	1.000 ea
10XN3118K16	5/16-18 X 1' GRADE #5, STL, ZINC PLATE	2.000 ea
HW1001A31	LOCKWASHER 5/16, ZINC PLT.591 OD, .319 I	2.000 ea

09EP1118A02LP5	FREP MACH, 309 BRG. EPOXY PRIMER & BLACK	1.000 ea
MJ5004A59	ADHESIVE LOCTITE #401 SURFACE INSENSITIV	0.010 ea
HW2501G25	KEY, 3/8 SQ X 2.875	1.000 ea
MJ5001A14	DYNAPRO SEALANT, CP MTR VC#2508050 (603	0.023 ea
MJ5002A01	SILICON RUBBER SEALANT, 732CL 10.3 OZ TU	0.025 ea
WD1000B49	T&B C73,RING TERMINAL 10-12 AWG 3/8 STUD	3.000 ea
WD1000B25	GND LUG, BURNDY L125HP OR T&B L125HP-BB	1.000 ea
10XN3118K08	5/16-18 X .50 GRADE #5, STL, ZINC PLATE	1.000 ea
HW1001A31	LOCKWASHER 5/16, ZINC PLT.591 OD, .319 I	1.000 ea
HW4500A21	1618BALEMITE FITTING 825 UNIVERSAL	1.000 ea
HA4051A00	PLASTIC CAP FOR GREASE FITTING	1.000 ea
HW4500A17	317400 ALEMITE GREASE RELIEF	1.000 ea
HA4002A03	#304 S.S. DRAIN FITTING, .125 NPT (.44 H	1.000 ea
MJ1000A02	GREASE, POLYREX EM EXXON	0.080 lb
HW4500A03	GREASE FITTING, .125 NPT 1610(ALEMITE) 8	1.000 ea
HA4051A00	PLASTIC CAP FOR GREASE FITTING	1.000 ea
HW4500A17	317400 ALEMITE GREASE RELIEF	1.000 ea
HA4002A03	#304 S.S. DRAIN FITTING, .125 NPT (.44 H	1.000 ea
MJ5001A27	32220KN GRAY SEALER *MIN BUY 4 QTS=1GAL	0.031 qt
HW2500A25	WOODRUFF KEY USA #1008 #BLOW CARBON STEE	1.000 ea
09FH1000LP5	FAN COVER, CAST W/EPOXY PRIMER & PAINT	1.000 ea
MG1025N19	WILKOFAS, 778.50, RELIANCE BLUE-GREEN 8	0.050 ga
85XU0407S04	4X1/4 U DRIVE PIN STAINLESS	4.000 ea
LB1449	DIV-2/NEC WARNING LABEL	1.000 ea
LB1115N	LABEL,LIFTING DEVICE (ON ROLLS)	1.000 ea
LB1119N	WARNING LABEL	1.000 ea
LC0006	CONNECTION LABEL	1.000 ea
NP4332	SS IEEE841-2021 INV DIV-2 UL CSA-C US EE	1.000 ea
40PA1017	PACKAGING GROUP, 09 VERT LARGE FLANGE	1.000 ea
MN416A01	TAG-INSTAL-MAINT no wire (2200bx) 4/22	1.000 ea
LD7020D03	LEAD SET, 12AWG, 3 LEAD, 20" LONG LEADS	1.000 ea

AC Induction Motor Performance Data

Record # 92352

Typical performance - not guaranteed values

Winding: 09WGT417-R001		Type: 0964M	Enclosure: TEFC		
Nameplate Data			460 V, 60 Hz: Single Voltage Motor		
Rated Output (HP)	20	Full Load Torque	59.51 LB-FT		
Volts	460	Start Configuration	direct on line		
Full Load Amps	23	Breakdown Torque	185 LB-FT		
R.P.M.	1760	Pull-up Torque	94.7 LB-FT		
Hz	60	Phase	3	Locked-rotor Torque	115 LB-FT
NEMA Design Code	B	KVA Code	G	Starting Current	145 A
Service Factor (S.F.)	1.15	No-load Current	7 A		
NEMA Nom. Eff.	93	Power Factor	87	Line-line Res. @ 25°C	0.41873 Ω
Rating - Duty	40C AMB-CONT		Temp. Rise @ Rated Load	60°C	
S.F. Amps			Temp. Rise @ S.F. Load	76°C	
			Locked-rotor Power Factor	29.4	

Load Characteristics 460 V, 60 Hz, 20 HP

% of Rated Load	25	50	75	100	125	150	S.F.
Power Factor	58	78	85	88	88	88	88
Efficiency	91.4	93.8	93.9	93	92.3	91	92.7
Speed	1792.1	1783.4	1774.6	1764.6	1754	1740.6	1758
Line amperes	8.93	12.8	17.6	22.9	28.7	35.1	26.4

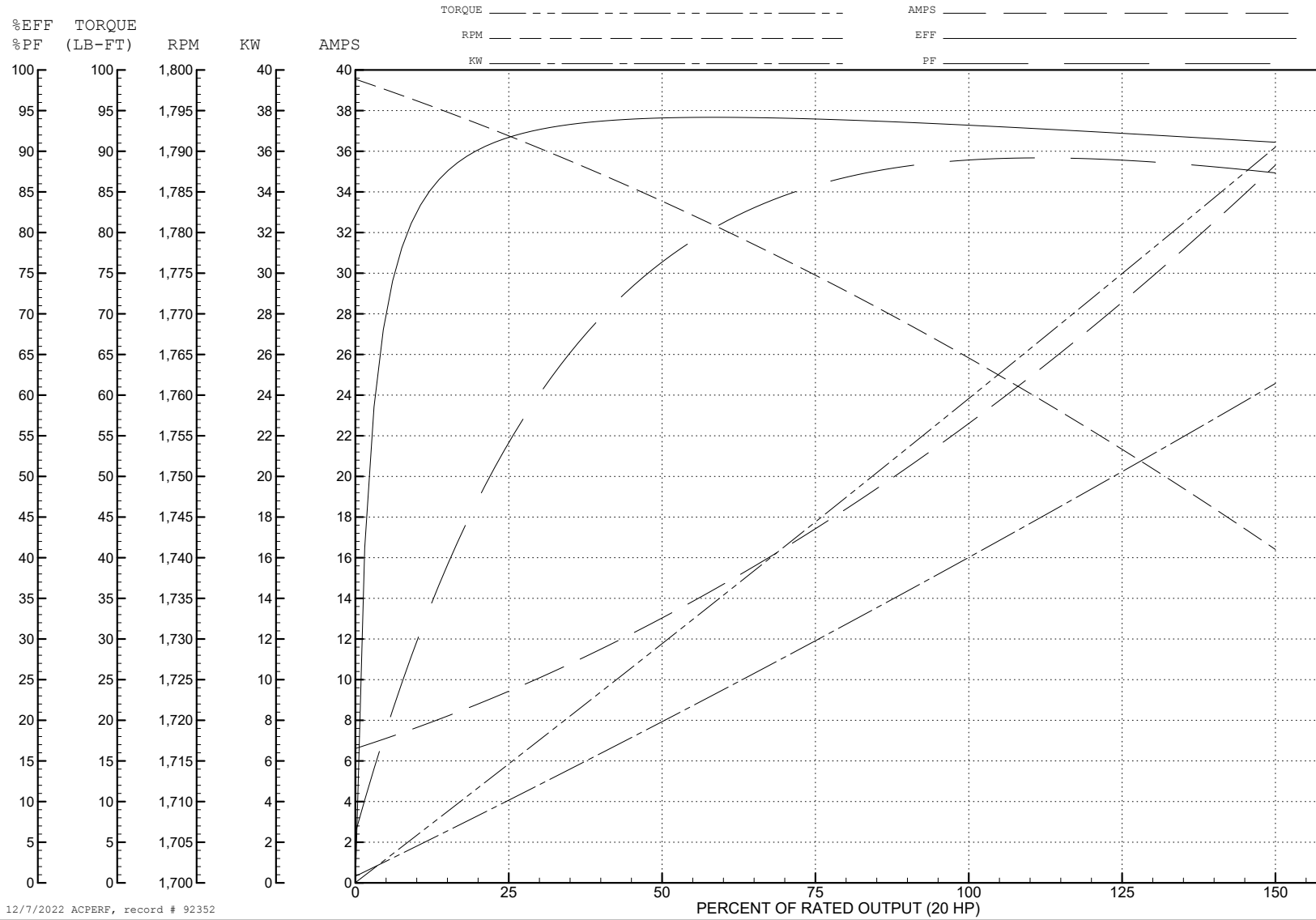
ABB Motors and Mechanical Inc.

WINDING # 09WGT417

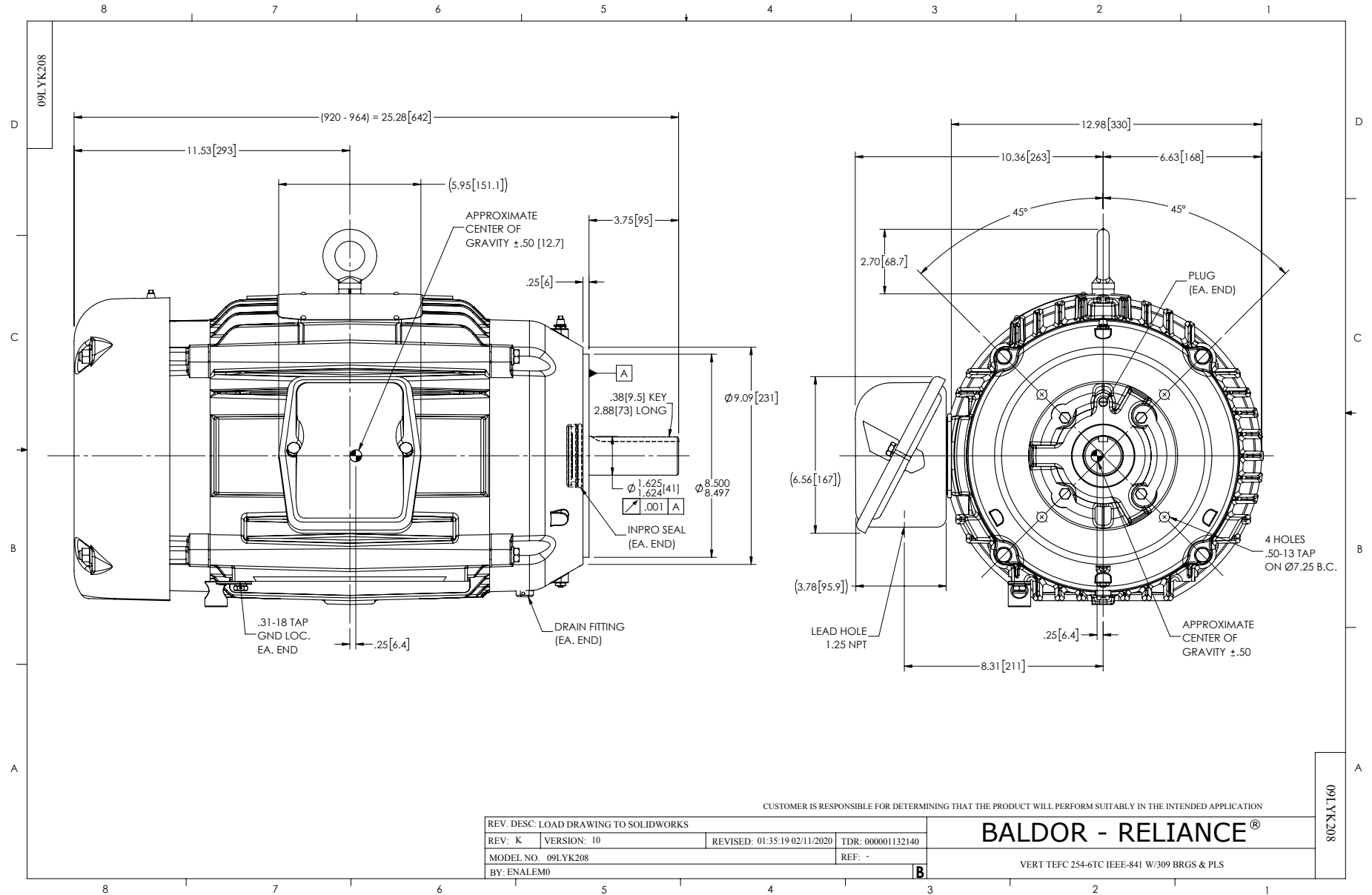
Typical performance - not guaranteed values.

20 HP 3 PH 60 HZ 1760 RPM 460 V 0964M

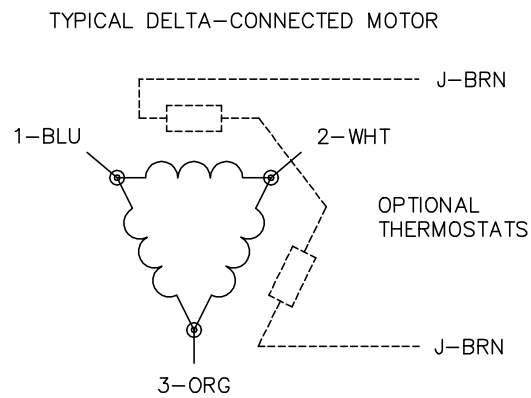
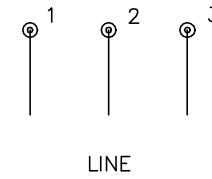
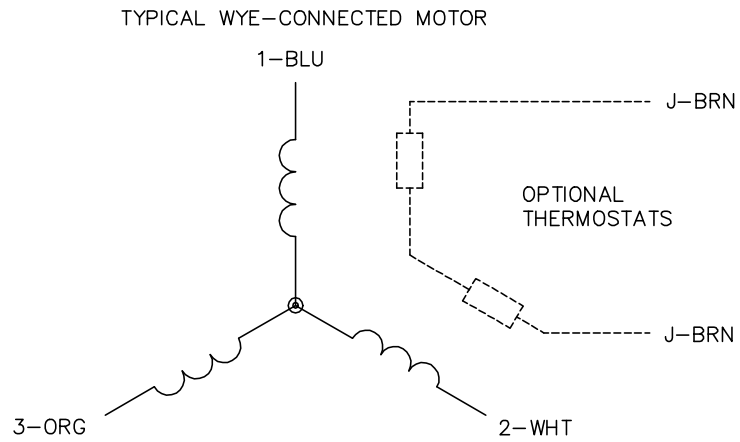
TORQUES (LB-FT): PO=185 PU=94.7 LR=115 LRA=145



12/7/2022 ACPERF, record # 92352



CD0006



NOTES:

1. THREE LEAD MOTOR MAY BE EITHER WYE CONNECTED OR DELTA CONNECTED.
2. INTERCHANGE ANY TWO LINE LEADS TO REVERSE ROTATION.
3. OPTIONAL THERMOSTATS ARE PROVIDED WHEN SPECIFIED.
4. ACTUAL NUMBER OF INTERNAL PARALLEL CIRCUITS MAY VARY.
5. LEAD COLORS ARE OPTIONAL. LEADS MUST BE NUMBERED AS SHOWN.

CD0006

REV. DESC: ADD CLASS CONN00000007		
REV. LTR: E	VERSION: 01	TDR: 000001099922
FILE: \AAA\00005\141	REVISED: 10:24:49 02/19/2019	BY: ENBRIRO
MTL: -	© □	

BALDOR - RELIANCE®

3PH, SV, 3 LEADS, WYE OR DELTA CONNECTED

SH 1 of 1