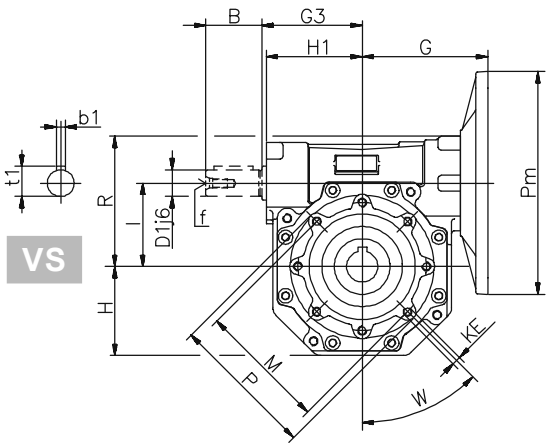
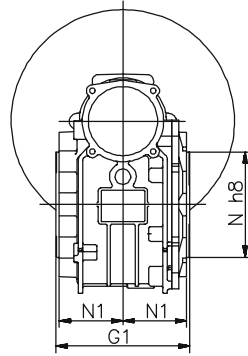
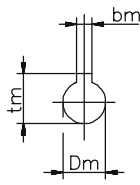


SW...

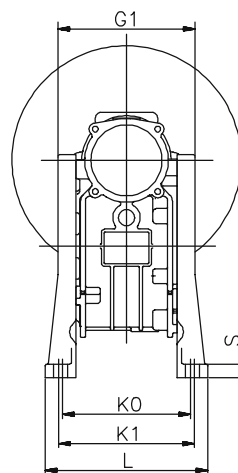
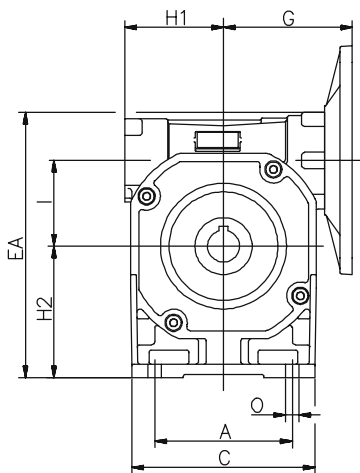
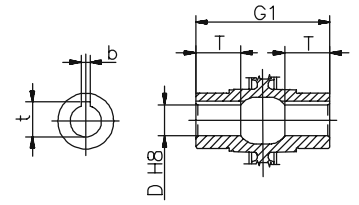
Dimensioni / Dimensions / Abmessungen / Encombremets / Dimensiones



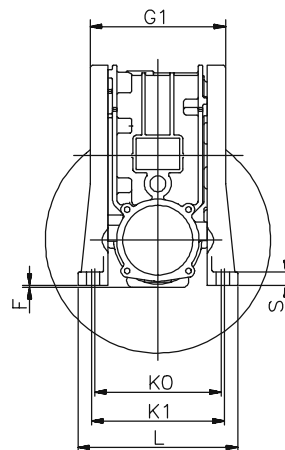
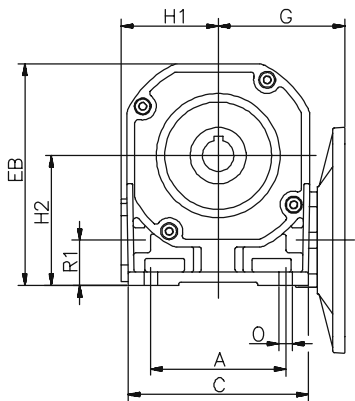
VS



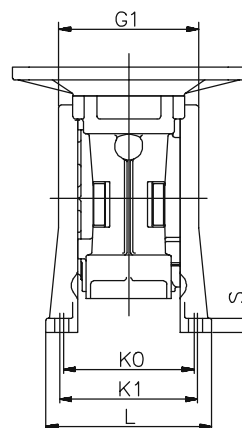
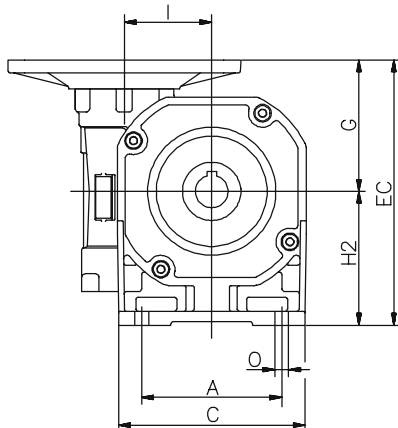
SW...T



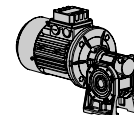
SW...PA-PAS



SW...PB-PBS



SW...PV-PVS



Dimensioni / Dimensions / Abmessungen / Encombremets / Dimensiones

SW...

SW...	030	040	050	063	075	090	105	
...T	G	55	70	80	95	112.5	129.5	160
	G1	63	78	92	112	120	140	155
	G3	45	53	64	75	90	108	135
	H	37.5	42	52	66	80	97	115
	H1	40	50	60	72	86	103	127.5
	I	30	40	50	63	75	90	110
	KE	M6x11 (n°4)	M6x10 (n°4)	M8x10 (n°4)	M8x14 (n°8)	M8x14 (n°8)	M10x18 (n°8)	M10x18 (n°8)
	M	65	75	85	95	115	130	165
	N	55	60	70	80	95	110	130
	N1	29	36.5	43.5	53	57	67	74
	P	75	87	97.6	110	130	148	200
	R	57	70	84	102	117	133	166
	W	90°	45°	45°	45°	45°	45°	45°
	D	14	18 (19)	25 (24)	25 (28)	28 (35)	35 (38)	42
	T	21	26	30	36	40	45	50
	b	5	6	8	8	8 (10)	10	12
	t	16.3	20.8 (21.8)	28.3 (27.3)	28.3 (31.3)	31.3 (38.3)	38.3 (41.3)	45.3
	B	20	23	30	40	50	50	60
	D1	9	11	14	19	24	24	28
	b1	3	4	5	6	8	8	8
t1	10.2	12.5	16	21.5	27	27	27	
f	/	/	M6	M6	M8	M8	M10	
...PA -...PB - ...PV	A	50	52	63	95	120	140	200
	C	80	90	110	140	160	200	250
	EA	112	142	166	202	232	275	338
	EB	96.5	117	137	170	196	242	293.5
	EC	110	142	162	195	227.5	271.5	332
	F	2	/	2	2	2	/	/
	H2	55	72	82	100	115	142	172
	K0	66	81	98.5	111	115	140	160
	K1	/	/	/	/	/	146	181
	L	80	98	124	138	142	180	208
	O	7	9	9	12	12	13	13
	R1	30	32	32	37	40	52	62
S	7	9	10	10	12	14	18	
...PAS -...PBS - ...PVS	A	/	70	85	/	/	160	200
	C	/	96	112	/	/	210	250
	EA	/	141	169	/	/	283	336
	EB	/	116	141	/	/	250	291.5
	EC	/	141	165	/	/	279.5	330
	F	/	/	/	/	/	/	/
	H2	/	71	85	/	/	150	170
	K0	/	84	96	/	/	164	160
	K1	/	/	99	/	/	/	181
	L	/	100	116	/	/	195	208
	O	/	7	9	/	/	13	13
	R1	/	31	35	/	/	60	60
S	/	9	10	/	/	14	16	
~Kg	1.2	2.3	3.5	6.2	9	13	21	

~kg Peso senza motore / Weight without motor / Gewicht ohne Motor
 Poids sans moteur / Peso sin motor

(..) Solo su richiesta
 (..) Only on request
 (..) Auf Wunsch
 (..) Seulement sur demande
 (..) Sólo bajo pedido

Per le dimensioni relative alla zona attacco motore (Pm, Dm, bm, tm) fare riferimento alla tabella di pag. 42.
 For the dimensions concerning the motor connection area (Pm, Dm, bm, tm) please refer to the table shown at page 42.
 Zu den Abmessungen des Motoranschlußflansches (Pm, Dm, bm, tm) siehe Tabelle auf Seite 42.
 Pour les dimensions concernant la zone de montage du moteur (Pm, Dm, bm, tm) lire SVP le tableau à la page 42.
 Para las magnitudes correspondientes a la zona del motor (Pm, Dm, bm, tm) consulte la tabla de la página 42.