

BALDOR® • RELIANCE 

Product Information Packet

L3509-50

1HP,2850RPM,1PH,50HZ,56,3524L,TEFC,F1

Part Detail							
Revision:	AH	Status:	PRD/A	Change #:		Proprietary:	No
Type:	AC	Elec. Spec:	35WGY962	CD Diagram:	CD0001	Mfg Plant:	
Mech. Spec:	35T944	Layout:	35LYT944	Poles:	02	Created Date:	06-22-2007
Base:	RG	Eff. Date:	06-28-2021	Leads:	4#16 A PH,2#18 B PH		

Specs			
Catalog Number:	L3509-50	Heater Indicator:	No Heater
Enclosure:	TEFC	Insulation Class:	B
Frame:	56	Inverter Code:	Not Inverter
Frame Material:	Steel	KVA Code:	H
Motor Letter Type:	Cap Start, Induction Run	Lifting Lugs:	No Lifting Lugs
Output @ Frequency:	1.000 HP @ 50 HZ	Locked Bearing Indicator:	No Locked Bearing
Synchronous Speed @ Frequency:	3000 RPM @ 50 HZ	Motor Lead Quantity/Wire Size:	4 @ 16 AWG, A PH
Voltage @ Frequency:	110.0 V @ 50 HZ	Motor Lead Exit:	Ko Box
	220.0 V @ 50 HZ	Motor Lead Termination:	Flying Leads
XP Class and Group:	None	Motor Type:	3524L
XP Division:	Not Applicable	Mounting Arrangement:	F1
Agency Approvals:	CE	Power Factor:	84
	CSA	Product Family:	General Purpose
	UR	Pulley End Bearing Type:	Ball
	WEEE	Pulley Face Code:	Standard
Auxillary Box:	No Auxillary Box	Pulley Shaft Indicator:	Standard
Auxillary Box Lead Termination:	None	Rodent Screen:	None
Base Indicator:	Rigid	RoHS Status:	ROHS COMPLIANT

Bearing Grease Type:	Polyrex EM (-20F +300F)	Shaft Extension Location:	Pulley End
Blower:	None	Shaft Ground Indicator:	No Shaft Grounding
Current @ Voltage:	6.300 A @ 220.0 V	Shaft Rotation:	Reversible
	12.600 A @ 110.0 V	Shaft Slinger Indicator:	No Slinger
Design Code:	N	Speed Code:	Single Speed
Drip Cover:	No Drip Cover	Motor Standards:	NEMA
Duty Rating:	CONT	Starting Method:	Direct on line
Electrically Isolated Bearing:	Not Electrically Isolated	Thermal Device - Bearing:	None
Feedback Device:	NO FEEDBACK	Thermal Device - Winding:	None
Front Face Code:	Standard	Vibration Sensor Indicator:	No Vibration Sensor
Front Shaft Indicator:	None	Winding Thermal 1:	None
		Winding Thermal 2:	None

Nameplate NP1372L													
CAT.NO.	L3509-50												
SPEC.	35T944Y962G1												
HP	1/.75KW IEC60034-30												
VOLTS	110/220												
AMP	12.6/6.3												
RPM	2850 1/MIN IP54 IC411 19KG												
FRAME	56					HZ	50			PH	1		
SER.F.	1.25					CODE	H		DES	N		CL	B
NEMA-NOM-EFF	68					PF	84						
RATING	40C AMB-CONT												
CC												USABLE AT 208V	
DE	6205					ODE	6203						
ENCL	TEFC					SN							
	SFA 15/7.5												

Parts List		
Part Number	Description	Quantity
SA109227	SA 35T944Y962G1	1.000 EA
RA100722	RA 35T944Y962G1	1.000 EA
EC1400A03	ELEC CAP, 400-480 MFD, 125V, 1.81D X 3.	1.000 EA
NS2512A01	INSULATOR, CONDUIT BOX X	1.000 EA
35CB3007	35 CB CASTING W/.88 DIA. LEAD HOLE	1.000 EA
36GS1000SP	GASKET-CONDUIT BOX, .06 THICK #SV-330 LE	1.000 EA
51XB1016A07	10-16 X 7/16 HXWSSLD SERTYB	2.000 EA
11XW1032G06	10-32 X .38, TAPTITE II, HEX WSHR SLTD U	1.000 EA
51XW0832A07	8-32 X .44, TAPTITE II, HEX WSHR SLTD SE	2.000 EA
35EP3122K00	MASTER ODE,203 BRG,.683SH,#26 DRN,FH MTG	1.000 EA
51XB1016A05	10-16X5/16HX WA SL SR TYB (F/S)	2.000 EA
HW5100A03	WAVY WASHER (W1543-017)	1.000 EA
35EP3123A00	MASTER DE,205 BRG,.998SH,#26 DRN	1.000 EA
XY1032A02	10-32 HEX NUT DIRECTIONAL SERRATION	4.000 EA
51XB1214A16	12-14X1.00 HXWSSLD SERTYB	1.000 EA
51XW1032A06	10-32 X .38, TAPTITE II, HEX WSHR SLTD S	3.000 EA
35CB4521GX	CONDUIT BOX LID KIT **ORDER INDIV PARTS	1.000 EA
51XW0832A07	8-32 X .44, TAPTITE II, HEX WSHR SLTD SE	4.000 EA
HW2501D13	KEY, 3/16 SQ X 1.375	1.000 EA
HA7000A04	KEY RETAINER 0.625 DIA SHAFTS	1.000 EA
85XU0407S04	4X1/4 U DRIVE PIN STAINLESS	2.000 EA
WD1000A16	2-520128-2 AMP FLAG TERMINAL(4M/RL)	1.000 EA
MJ1000A02	GREASE, POLYREX EM EXXON	0.050 LB
34FN3002A01SP	EXTERNAL FAN, PLASTIC, .637/.639 HUB W/	1.000 EA

Parts List (continued)		
Part Number	Description	Quantity
35FH4005A32SP	IEC FH NO GRSR W/3 HOLES - PRIMED	1.000 EA
MG1000G27	MED CHARCOAL METALLIC GREY 400-0096	0.017 GA
SP5051A24	MODEL 35 TORQ STATIONARY SWITCH FOR "L"	1.000 EA
HA3100A18	THRUBOLT 10-32 X 9.250	4.000 EA
35CB4802A02SP	CAPACITOR COVER, STAMPED X	1.000 EA
35GS3001A02	GASKET, CA.COVER, 5.38 LONG .06 CS301	1.000 EA
HA4067A01	PUSH IN DRAIN FITTING (BLACK)	1.000 EA
LC0001A01	CONN LABEL / WARNING LABEL (LC0001 / LB1	1.000 EA
NP1372L	ALUM UL CSA CE CC	1.000 EA
HA4067A01	PUSH IN DRAIN FITTING (BLACK)	1.000 EA
35PA1066	PKG GRP, PRINT PK1008A06	1.000 EA
FE-0000001	ZRTG FE ASSEMBLY	1.000 EA
MN416A01	TAG-INSTAL-MAINT no wire (2200bx) 4/22	1.000 EA
PE-0000001	ZRTG PE ASSEMBLY	1.000 EA
LB1617	UKCA COMPLIANCE STICKER	1.000 EA

Accessories		
Part Number	Description	Multiplier
35-8762	C FACE KIT	A8
35EP1506A01SP	D-FLANGE KIT	A8

AC Induction Motor Performance Data

Record # 10378

Typical performance - not guaranteed values

Winding: 35WGY962-R001		Type: 3524L		Enclosure: TEFC	
Nameplate Data			220 V, 50 Hz: High Voltage Connection		
Rated Output (HP)		1	Full Load Torque		1.8 LB-FT
Volts		110/220	Start Configuration		direct on line
Full Load Amps		12.6/6.3	Breakdown Torque		4.25 LB-FT
R.P.M.		2850	Pull-up Torque		3.63 LB-FT
Hz	50 Phase	1	Locked-rotor Torque		4 LB-FT
NEMA Design Code	N	KVA Code	H	Starting Current	32 A
Service Factor (S.F.)		1.25	No-load Current		3 A
NEMA Nom. Eff.	68	Power Factor	84	Line-line Res. @ 25°C	2.09 Ω A Ph 2.08 Ω B Ph
Rating - Duty		40C AMB-CONT	Temp. Rise @ Rated Load		69°C
S.F. Amps		15/7.5	Temp. Rise @ S.F. Load		90°C

Load Characteristics 220 V, 50 Hz, 1 HP

% of Rated Load	25	50	75	100	125	150	S.F.
Power Factor	53	71	80	84	88	89	88
Efficiency	60	68	69	67	66	60	66
Speed	3028	2993	2957	2911	2857	2779	2857
Line amperes	3.5	4.3	5.1	6.3	7.6	9.6	7.6

Performance Graph at 220V, 50Hz, 1.0HP Typical performance - Not guaranteed values

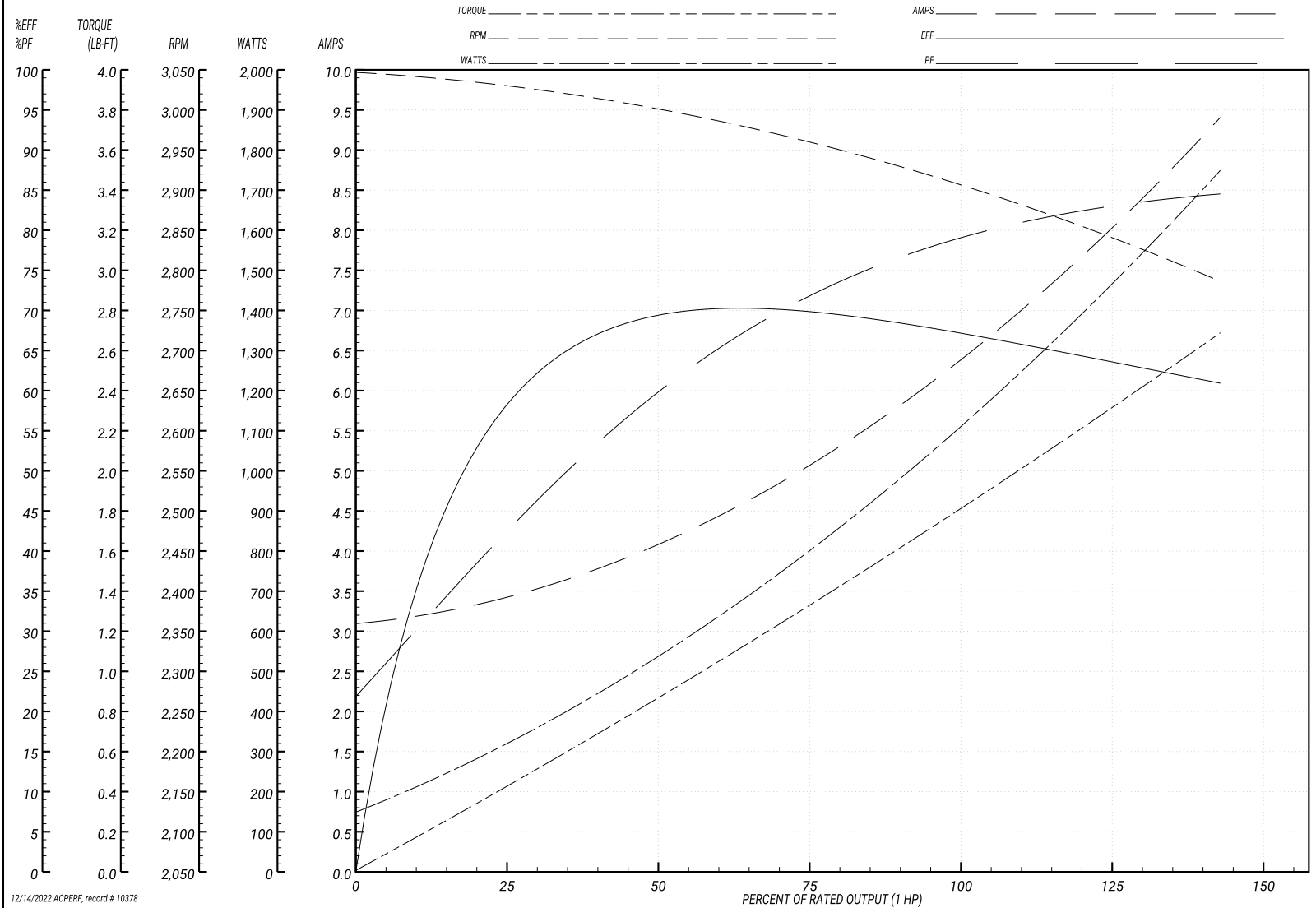
BALDOR ELECTRIC COMPANY

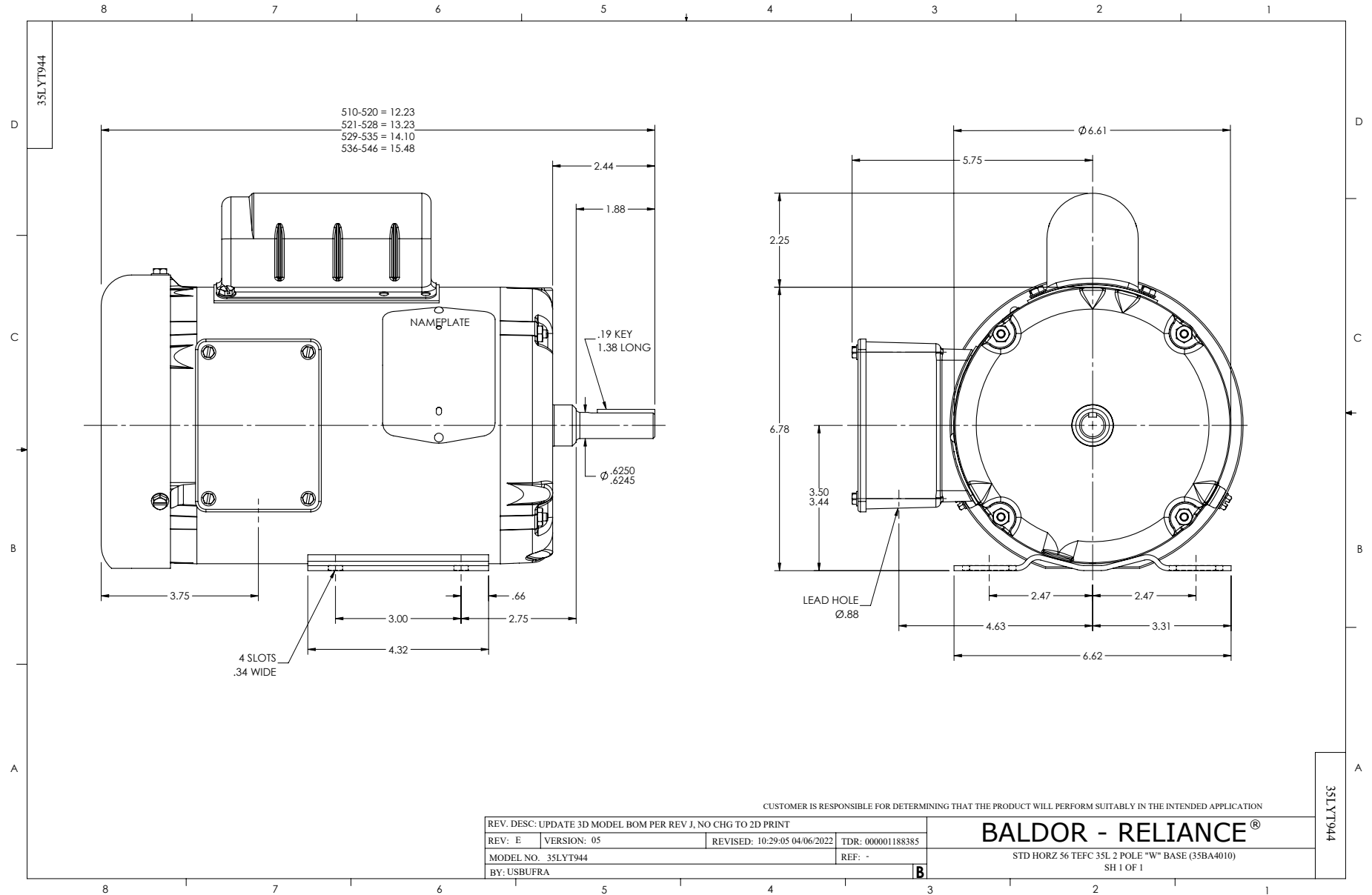
WINDING # 35WGY962

Typical performance - not guaranteed values.

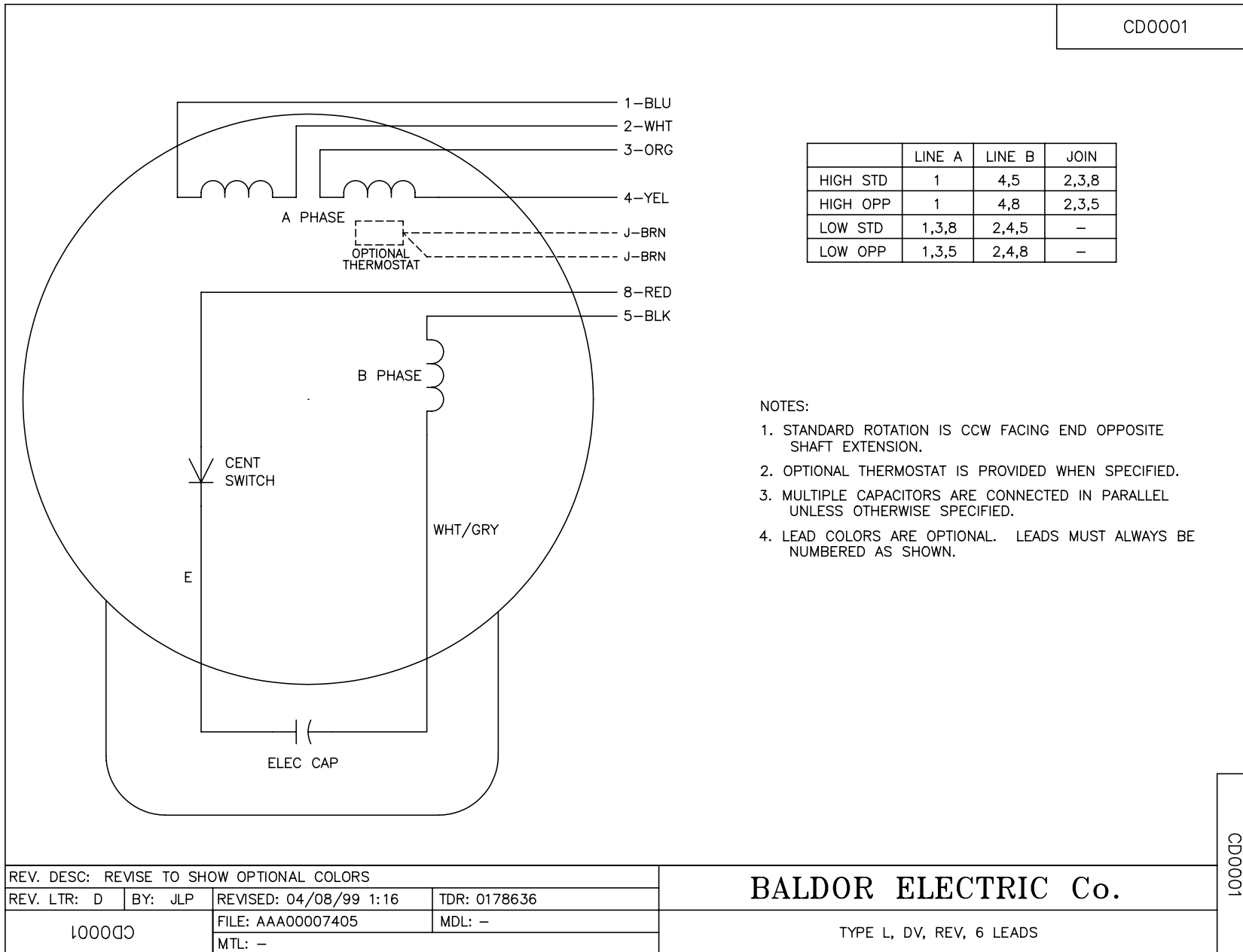
1 HP 1 PH 50 HZ 2850 RPM 220 V 3524L

TORQUES(LB-FT): PO=4.25 PU=3.63 LR=4 LRA=32





CD0001



REV. DESC: REVISE TO SHOW OPTIONAL COLORS			
REV. LTR: D	BY: JLP	REVISED: 04/08/99 1:16	TDR: 0178636
100000		FILE: AAA00007405	MDL: -
		MTL: -	

BALDOR ELECTRIC Co.

TYPE L, DV, REV, 6 LEADS

CD0001