



---

# Customer information packet

## EM2395T

15HP, 880RPM, 3PH, 60HZ, 286T, 1060M, TEFC, F1

ELECTRIC MOTOR WHOLESALE.COM

Class - None

Division - Not Applicable

## Specifications

|                                |  |
|--------------------------------|--|
| Enclosure                      | TEFC                                     |
| Frame                          | 286T                                     |
| Frame Material                 | Iron                                     |
| Frequency                      | 60.00 Hz                                 |
| Output @ Frequency             | 15.000 HP @ 60 HZ                        |
| Phase                          | 3  |
| Synchronous Speed @ Frequency  | 900 RPM @ 60 HZ                          |
| Voltage @ Frequency            | 230.0 V @ 60 HZ<br>460.0 V @ 60 HZ       |
| XP Class and Group             | None                                     |
| XP Division                    | Not Applicable                           |
| Agency Approvals               | UR<br>CSA<br>CSA EEV                     |
| Ambient Temperature            | 40 °C                                    |
| Auxillary Box                  | No Auxillary Box                         |
| Auxillary Box Lead Termination | None                                     |
| Base Indicator                 | Rigid                                    |
| Bearing Grease Type            | Polyrex EM (-20F +300F)                  |
| Blower                         | None                                     |
| Current @ Voltage              | 46.000 A @ 230.0 V<br>23.000 A @ 460.0 V |
| Design Code                    | B  |
| Drip Cover                     | No Drip Cover                            |
| Duty Rating                    | CONT                                     |
| Efficiency @ 100% Load         | 89.5 %                                   |
| Electrically Isolated Bearing  | Not Electrically Isolated                |
| Feedback Device                | NO FEEDBACK                              |
| Front Face Code                | Standard                                 |
| Front Shaft Indicator          | None                                     |
| Heater Indicator               | No Heater                                |
| High Voltage Full Load Amps    | 23.0 a                                   |

## Part detail

|              |            |
|--------------|------------|
| Revision     | J          |
| Type         | AC         |
| Mech. spec.  | 10C151     |
| Base         |            |
| Status       | PRD/A      |
| Elec. spec.  | 10WGZ376   |
| Layout       | 10LYC151   |
| Eff. date    | 09-02-2020 |
| CD Diagram   | CD0005     |
| Poles        | 08         |
| Leads        | 9#12       |
| Proprietary  | False      |
| Created date | 04-06-2015 |

|                                      |                       |
|--------------------------------------|-----------------------|
| <b>Insulation Class</b>              | F                     |
| <b>Inverter Code</b>                 | Not Inverter          |
| <b>KVA Code</b>                      | G                     |
| <b>Lifting Lugs</b>                  | Standard Lifting Lugs |
| <b>Locked Bearing Indicator</b>      | Locked Bearing        |
| <b>Motor Lead Exit</b>               | Ko Box                |
| <b>Motor Lead Quantity/Wire Size</b> | 9 @ 12 AWG            |
| <b>Motor Lead Termination</b>        | Flying Leads          |
| <b>Motor Standards</b>               | NEMA                  |
| <b>Motor Type</b>                    | 1060M                 |
| <b>Mounting Arrangement</b>          | F1                    |
| <b>Number of Poles</b>               | 8                     |
| <b>Overall Length</b>                | 27.76 IN              |
| <b>Power Factor</b>                  | 68                    |
| <b>Product Family</b>                | General Purpose       |
| <b>Pulley End Bearing Type</b>       | Ball                  |
| <b>Pulley Face Code</b>              | Standard              |
| <b>Pulley Shaft Indicator</b>        | Standard              |
| <b>Rodent Screen</b>                 | None                  |
| <b>Service Factor</b>                | 1.15                  |
| <b>Shaft Diameter</b>                | 1.875 IN              |
| <b>Shaft Extension Location</b>      | Pulley End            |
| <b>Shaft Ground Indicator</b>        | No Shaft Grounding    |
| <b>Shaft Rotation</b>                | Reversible            |
| <b>Shaft Slinger Indicator</b>       | Shaft Slinger         |
| <b>Speed</b>                         | 880 rpm               |
| <b>Speed Code</b>                    | Single Speed          |
| <b>Starting Method</b>               | Direct on line        |
| <b>Thermal Device - Bearing</b>      | NONE (OLD)            |
| <b>Thermal Device - Winding</b>      | None                  |
| <b>Vibration Sensor Indicator</b>    | No Vibration Sensor   |
| <b>Winding Thermal 1</b>             | None                  |
| <b>Winding Thermal 2</b>             | None                  |

**Nameplate**

**NP2138L**

|                     |              |                       |            |                  |      |
|---------------------|--------------|-----------------------|------------|------------------|------|
| <b>CAT.NO.</b>      | EM2395T      | <b>P/N</b>            |            | <b>ENCLOSURE</b> | TEFC |
| <b>SPEC.</b>        | 10C151Z376G1 | <b>CC</b>             | 010A       | <b>FRAME</b>     | 286T |
| <b>HP</b>           | 15           | <b>CLASS</b>          | F          | <b>HZ</b>        | 60   |
| <b>RPM</b>          | 880          | <b>PH</b>             | 3          | <b>DES</b>       | B    |
| <b>VOLT</b>         | 230/460      | <b>KVA-CODE</b>       | G          | <b>ODE BRG</b>   | 6309 |
| <b>AMP</b>          | 46/23        | <b>USABLE AT 208V</b> |            | <b>DE BRG</b>    | 6311 |
| <b>RATING</b>       | 40C AMB-CONT | <b>GREASE</b>         | POLYREX EM |                  |      |
| <b>NEMA-NOM-EFF</b> | 89.5         | <b>PF</b>             | 68         | <b>SER.F.</b>    | 1.15 |
| <b>HTR-VOLTS</b>    |              | <b>HTR-AMPS</b>       |            |                  |      |

## Parts list

| Part number | Description                              | Quantity |
|-------------|--|----------|
| SA296441    | SA 10C151Z376G1                          | 1.000 ea |
| RA282481    | RA 10C151Z376G1                          | 1.000 ea |
| 10CB3000SP  | KOBX, CAST W/2.00 LEAD HOLE              | 1.000 ea |
| 09GS1000SP  | GASKET-CONDUIT BOX, 1/16 THICK LEXIDE    | 1.000 ea |
| 10XN3118K12 | 5/16-18 X .75 GRADE 5, ZINC PLATED       | 4.000 ea |
| HW1001A31   | LOCKWASHER 5/16, ZINC PLT.591 OD, .319 I | 4.000 ea |
| WD1000B25   | GND LUG, BURNDY L125HP OR T&B L125HP-BB  | 1.000 ea |
| 19XW3118G08 | .31-18X.50,HEX WSHR HD,TAPTITE 2,GREEN   | 1.000 ea |
| 10EP1106A01 | FR ENDPLATE, MACH                        | 1.000 ea |
| 10XN3816K32 | BOLT, 3/8-16X2 HH YZ(5)                  | 4.000 ea |
| HA4017A01   | 1/8 X 4 GREASE EXT (F/S)                 | 1.000 ea |
| HW1001A38   | LOCKWASHER 3/8, ZINC PLT .688 OD, .382 I | 4.000 ea |
| HW5100A11   | W3917-042 WVY WSHR (WB)                  | 1.000 ea |
| 10XN2520K32 | 1/4-20 X 2.00 HX HD SCRW GRADE 5, ZINC P | 2.000 ea |
| HW1001A25   | LOCKWASHER 1/4, ZINC PLT .493 OD, .255 I | 2.000 ea |
| 10XN3118K40 | 5/16-18 X 2.50" HEX HD, GRADE 5          | 4.000 ea |
| HW1001A31   | LOCKWASHER 5/16, ZINC PLT.591 OD, .319 I | 4.000 ea |
| 10EP1105A01 | PU ENDPLATE                              | 1.000 ea |
| 10XN3816K28 | 3/8-16 X 1.75 HEX HD CAP SCREW, GRADE 5  | 4.000 ea |
| HW1001A38   | LOCKWASHER 3/8, ZINC PLT .688 OD, .382 I | 4.000 ea |
| 10FH4000    | 310 FAN HOUSING STAMPED                  | 1.000 ea |
| 51XF2520A08 | SCREW, HEX SER SLT HD, ZN 1/4-20 X .50 L | 4.000 ea |
| 10CB3500SP  | CONDUIT BOX LID, CAST                    | 1.000 ea |
| 10GS1000SP  | GASKET, CONDUIT BOX LID                  | 1.000 ea |
| 51XW2520A12 | .25-20 X .75, TAPTITE II, HEX WSHR SLTD  | 4.000 ea |
| HW4600B40   | V-RING SLINGER 2.000 X 2.680 X .28 VITON | 1.000 ea |
| HW2501H28   | KEY, 1/2 SQ X 3.250                      | 1.000 ea |
| LB1115N     | LABEL,LIFTING DEVICE (ON ROLLS)          | 1.000 ea |
| HA4051A00   | PLASTIC CAP FOR GREASE FITTING           | 1.000 ea |
| HW4500A21   | 1618BALEMITE FITTING 825 UNIVERSAL       | 1.000 ea |
| HW4500A17   | 317400 ALEMITE GREASE RELIEF             | 1.000 ea |

|             |  |          |
|-------------|--|----------|
| HA4054      | SHORT T-DRAIN FITTING, .125" N.P.T.      | 1.000 ea |
| MJ1000A02   | GREASE, MOBIL POLYREX EM - 124047        | 0.130 lb |
| HA4051A00   | PLASTIC CAP FOR GREASE FITTING           | 1.000 ea |
| HW4500A03   | GREASE FITTING, .125 NPT 1610(ALEMITE) 8 | 1.000 ea |
| HW4500A17   | 317400 ALEMITE GREASE RELIEF             | 1.000 ea |
| HA4054      | SHORT T-DRAIN FITTING, .125" N.P.T.      | 1.000 ea |
| 09FN3001C02 | EXTERNAL FAN, PLASTIC                    | 1.000 ea |
| HW2500A25   | WOODRUFF KEY USA #1008 #BLOW CARBON STEE | 1.000 ea |
| MG1000Y03   | MUNSELL 2.53Y 6.70/ 4.60, GLOSS 20,      | 0.125 ga |
| 85XU0407S04 | 4X1/4 U DRIVE PIN STAINLESS              | 4.000 ea |
| LB1119N     | WARNING LABEL                            | 1.000 ea |
| LC0005      | CONN.DIA.,TY M,9-LD,DUAL VOLT,REVERSING  | 1.000 ea |
| NP2138L     | ALUM SUPER-E UL CSA-EEV PREM CC (300     | 1.000 ea |
| 10PA1000    | PACKAGING GROUP COMBINED PRINT PK1023A06 | 1.000 ea |
| MN416A01    | TAG-INSTAL-MAINT no wire (1200/bx) 3/19  | 1.000 ea |
| FE-0000022  | ZRTG FE ASSEMBLY                         | 1.000 ea |
| PE-0000013  | ZRTG PE ASSEMBLY                         | 1.000 ea |

**AC Induction Motor Performance Data**

Record # 53503

Typical performance - not guaranteed values

| <b>Winding: 10WGZ376-R001</b> |                          | <b>Type: 1060M</b>         |  | <b>Enclosure: TEFC</b> |  |
|-------------------------------|--------------------------|----------------------------|--|------------------------|--|
| <b>Nameplate Data</b>         |                          |                            | <b>460 V, 60 Hz:<br/>High Voltage Connection</b> |                        |  |
| <b>Rated Output (HP)</b>      | 15                       | <b>Full Load Torque</b>    | 88.8 LB-FT                                       |                        |  |
| <b>Volts</b>                  | 230/460                  | <b>Start Configuration</b> | direct on line                                   |                        |  |
| <b>Full Load Amps</b>         | 46/23                    | <b>Breakdown Torque</b>    | 207 LB-FT  |                        |  |
| <b>R.P.M.</b>                 | 880                      | <b>Pull-up Torque</b>      | 91 LB-FT   |                        |  |
| <b>Hz</b>                     | 60 <b>Phase</b>          | 3                          | <b>Locked-rotor Torque</b>                       | 114 LB-FT              |  |
| <b>NEMA Design Code</b>       | <b>B KVA Code</b>        | G                          | <b>Starting Current</b>                          | 106 A                  |  |
| <b>Service Factor (S.F.)</b>  | 1.15                     | <b>No-load Current</b>     | 13.8 A   |                        |  |
| <b>NEMA Nom. Eff.</b>         | 89.5 <b>Power Factor</b> | 68                         | <b>Line-line Res. @ 25°C</b>                     | 0.66153 Ω              |  |
| <b>Rating - Duty</b>          | 40C AMB-CONT             |                            | <b>Temp. Rise @ Rated Load</b>                   | 60°C                   |  |
| <b>S.F. Amps</b>              |                          |                            | <b>Temp. Rise @ S.F. Load</b>                    | 73°C                   |  |
|                               |                          |                            | <b>Locked-rotor Power Factor</b>                 | 31.7                   |  |

**Load Characteristics 460 V, 60 Hz, 15 HP**

| <b>% of Rated Load</b> | <b>25</b> | <b>50</b> | <b>75</b> | <b>100</b> | <b>125</b> | <b>150</b> | <b>S.F.</b> |
|------------------------|-----------|-----------|-----------|------------|------------|------------|-------------|
| <b>Power Factor</b>    | 29        | 48        | 60        | 67         | 70         | 72         | 69          |
| <b>Efficiency</b>      | 82        | 88.3      | 89.7      | 89.6       | 88.7       | 87.2       | 89.1        |
| <b>Speed</b>           | 896.3     | 892.8     | 888.8     | 884.2      | 878.6      | 871.7      | 881         |
| <b>Line amperes</b>    | 14.5      | 16.5      | 19.5      | 23.4       | 28.1       | 33.6       | 26.2        |

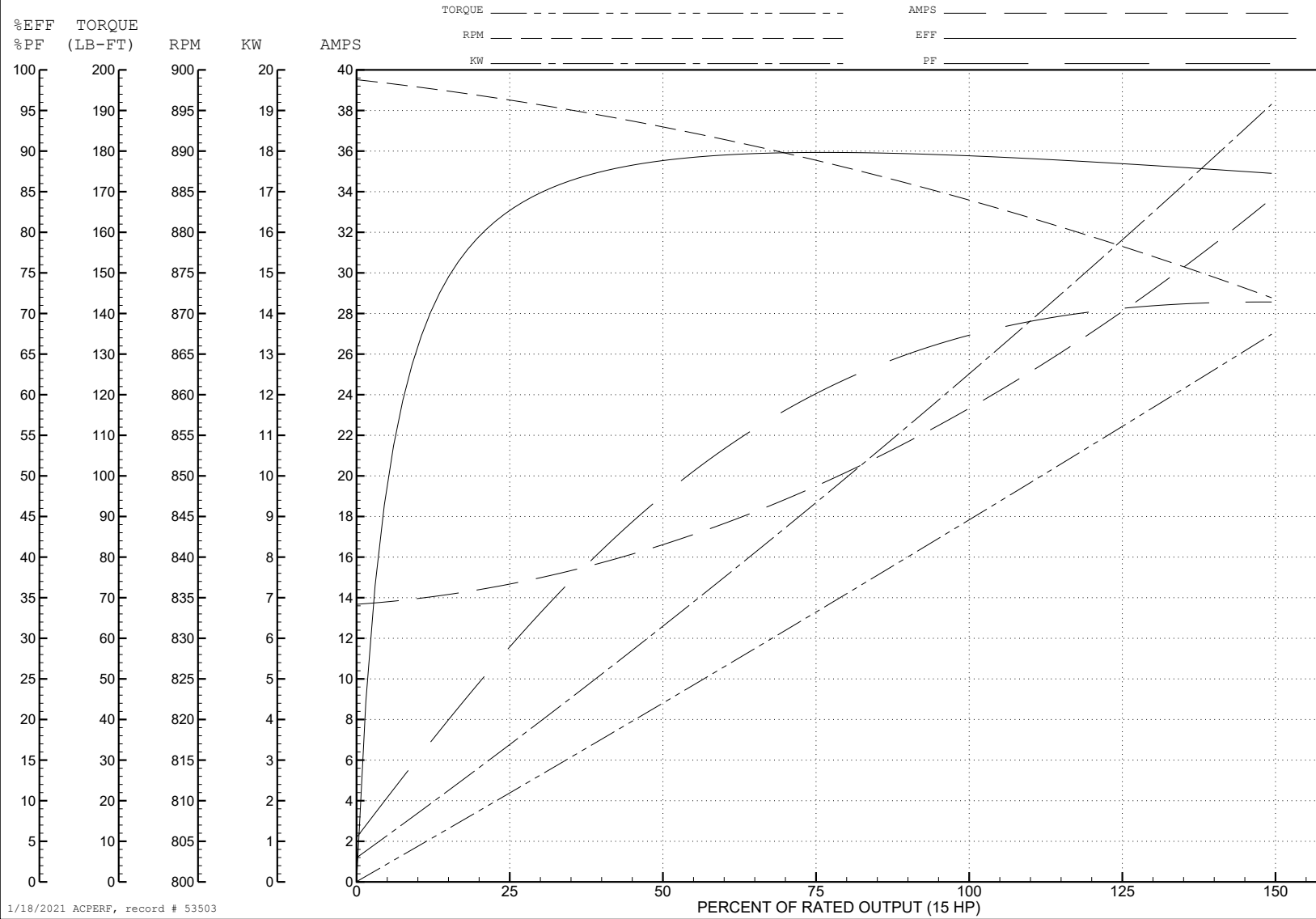
ABB Motors and Mechanical Inc.

WINDING # 10WGZ376

Typical performance - not guaranteed values.

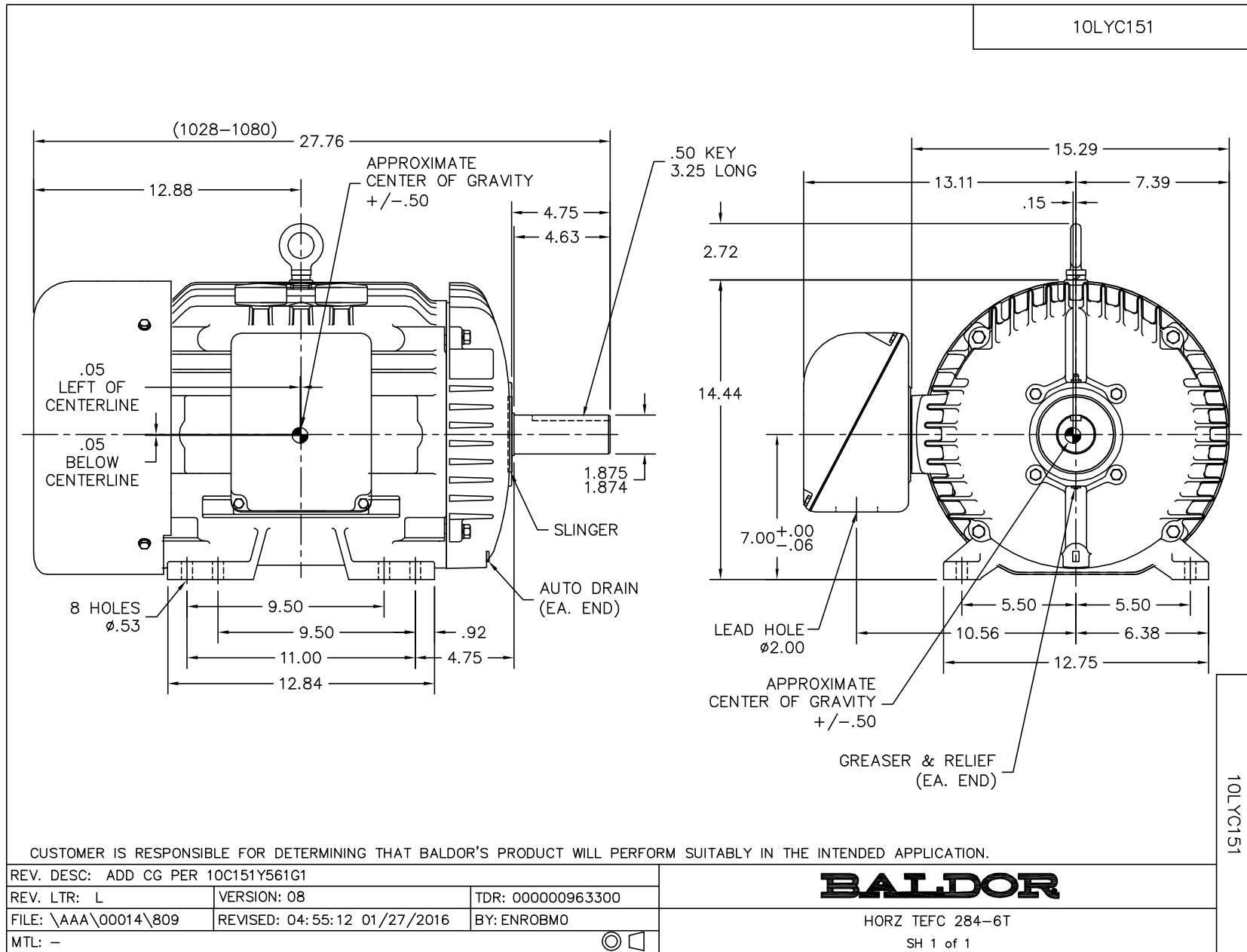
15 HP 3 PH 60 HZ 880 RPM 460 V 1060M

TORQUES (LB-FT): PO=207 PU=91 LR=114 LRA=106

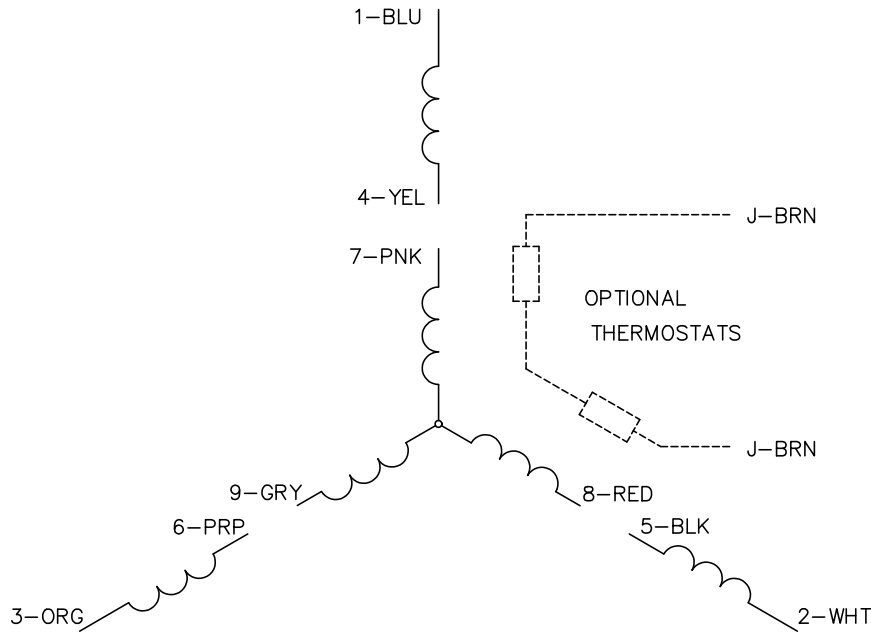


1/18/2021 ACPERF, record # 53503

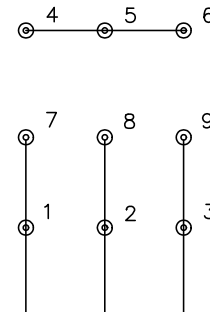




CD0005

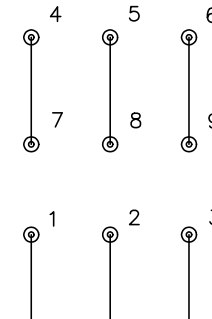


LOW VOLTAGE  
(2Y)



LINE

HIGH VOLTAGE  
(1Y)



LINE

NOTES:

1. INTERCHANGE ANY TWO LINE LEADS TO REVERSE ROTATION.
2. OPTIONAL THERMOSTATS ARE PROVIDED WHEN SPECIFIED.
3. ACTUAL NUMBER OF INTERNAL PARALLEL CIRCUITS MAY BE A MULTIPLE OF THOSE SHOWN ABOVE.
4. LEAD COLORS ARE OPTIONAL. LEADS MUST ALWAYS BE NUMBERED AS SHOWN.

|   |         |                         |              |
|---|---------|-------------------------|--------------|
| REV. DESC: REVISE TO SHOW OPTIONAL COLORS |         |                         |              |
| REV. LTR: E                               | BY: JLP | REVISED: 01/19/99 10:15 | TDR: 0171435 |
| S00000                                    |         | FILE: AAA00005140       | MDL: -       |
|   |         | MTL: -                  |              |

**BALDOR ELECTRIC Co.**

3PH, DV, 9 LEADS

CD0005