



Customer information packet

EM2333T-58

15HP, 1450RPM, 3PH, 50HZ, 254T, 0948M, TEFC, F1

ELECTRIC MOTOR WHOLESale.COM

Class - None

Division - Not Applicable

Specifications

| | |
|--------------------------------|---------------------------|
| Enclosure | TEFC |
| Frame | 254T |
| Frame Material | Iron |
| Frequency | 50.00 Hz |
| Output @ Frequency | 15.000 HP @ 50 HZ |
| Phase | 3 |
| Synchronous Speed @ Frequency | 1500 RPM @ 50 HZ |
| Voltage @ Frequency | 400.0 V @ 50 HZ |
| XP Class and Group | None |
| XP Division | Not Applicable |
| Agency Approvals | CE CSA UR WEEE |
| Ambient Temperature | 40 °C |
| Auxillary Box | No Auxillary Box |
| Auxillary Box Lead Termination | None |
| Base Indicator | Rigid |
| Bearing Grease Type | Polyrex EM (-20F +300F) |
| Blower | None |
| Current @ Voltage | 21.000 A @ 400.0 V |
| Design Code | B |
| Drip Cover | No Drip Cover |
| Duty Rating | CONT |
| Efficiency @ 100% Load | 91.4 % |
| Electrically Isolated Bearing | Not Electrically Isolated |
| Feedback Device | NO FEEDBACK |
| Front Face Code | Standard |
| Front Shaft Indicator | None |
| Heater Indicator | No Heater |
| High Voltage Full Load Amps | 21.0 a |
| Insulation Class | F |

Part detail

| | |
|--------------|------------|
| Revision | T |
| Type | AC |
| Mech. spec. | 09F103 |
| Base | |
| Status | PRD/A |
| Elec. spec. | 09Wgz837 |
| Layout | 09LYF103 |
| Eff. date | 06-21-2021 |
| CD Diagram | CD0382 |
| Poles | 04 |
| Leads | 6#12 |
| Proprietary | False |
| Created date | 04-03-2015 |

| | |
|-------------------------------|-----------------------|
| Inverter Code | Not Inverter |
| KVA Code | H |
| Lifting Lugs | Standard Lifting Lugs |
| Locked Bearing Indicator | Locked Bearing |
| Motor Lead Exit | Ko Box |
| Motor Lead Quantity/Wire Size | 6 @ 12 AWG |
| Motor Lead Termination | Flying Leads |
| Motor Standards | NEMA |
| Motor Type | 0948M |
| Mounting Arrangement | F1 |
| Number of Poles | 4 |
| Overall Length | 23.35 IN |
| Power Factor | 81 |
| Product Family | General Purpose |
| Pulley End Bearing Type | Ball |
| Pulley Face Code | Standard |
| Pulley Shaft Indicator | Standard |
| Rodent Screen | None |
| RoHS Status | ROHS COMPLIANT |
| Service Factor | 1.15 |
| Shaft Diameter | 1.625 IN |
| Shaft Extension Location | Pulley End |
| Shaft Ground Indicator | No Shaft Grounding |
| Shaft Rotation | Reversible |
| Shaft Slinger Indicator | Shaft Slinger |
| Speed | 1450 rpm |
| Speed Code | Single Speed |
| Starting Method | Wye Start - Delta Run |
| Thermal Device - Bearing | None |
| Thermal Device - Winding | None |
| Vibration Sensor Indicator | No Vibration Sensor |
| Winding Thermal 1 | None |
| Winding Thermal 2 | None |

Nameplate

| NP3444L | | | | | | | | | |
|----------------------------------|------------------------|-----------------------|------|-------------|-----------|-----------|---|--|--|
| CAT NO | EM2333T-58 | | | | | | | | |
| SPEC. | 09F103Z837G1 | | | | | | | | |
| HP | 15/11.1KW | | | | PH | 3 | | | |
| VOLTS | 400 | | | | | | | | |
| AMP | 21 | | | | | | | | |
| RPM | 1450 1/MIN IC411 130KG | | | | | | | | |
| FRAME | 254T | HZ | 50 | I.P. | 54 | | | | |
| SER.F. | 1.15 | CODE | H | DES | B | CL | F | | |
| NOM.EFF. | 91.4 | | | | | | | | |
| PF | 81 | USABLE AT 208V | | | | | | | |
| RATING | 40C AMB-S1 CONT | | | | CC | | | | |
| DE BRG | 6309 | ODE | 6208 | | | | | | |
| ENCL | TEFC | SN | | | | | | | |
| VPWM INVERTER READY | | | | | | | | | |
| CT5-50(10:1)VT2.5-50(20:1 | | | | | | | | | |
| BLANK | IE3-91.8(75%)91.1(50%) | | | | | | | | |

Parts list

| Part number | Description | Quantity |
|---------------|--|----------|
| SA296421 | SA 09F103Z837G1 | 1.000 ea |
| RA282461 | RA 09F103Z837G1 | 1.000 ea |
| 09FN3001D01SP | EXTERNAL FAN, PLASTIC (COMES W/SCREW FRO | 1.000 ea |
| 09CB3003 | CB W/1.75" DIA LD HL - 37, 39, 307 & 309 | 1.000 ea |
| 09GS1000SP | GASKET-CONDUIT BOX, 1/16 THICK LEXIDE | 1.000 ea |
| 51XW2520A12 | .25-20 X .75, TAPTITE II, HEX WSHR SLTD | 4.000 ea |
| HW1001A25 | LOCKWASHER 1/4, ZINC PLT .493 OD, .255 I | 2.000 ea |
| 09EP1101A11SP | PU ENDPLATE, MACH | 1.000 ea |
| 10XN3816K28 | 3/8-16 X 1.75 HEX HD CAP SCREW, GRADE 5 | 4.000 ea |
| WD1000B16 | T&B CX70TN OR L70P TERMINAL LUG | 1.000 ea |
| 59XW2520G07 | .25-20X.44,HEX SER WSHR,TAPTITE 2,GREEN | 1.000 ea |
| 09EP1100A14 | FREP ASSM, (FOR INTRL ROUTING PURPOSE) | 1.000 ea |
| HA3400A33 | STUD- 3/8-16 X 4.82 HEX WELKER | 4.000 ea |
| HW5100A08 | W3118-035 WVY WSHR (WB) | 1.000 ea |
| 10XN2520K28 | 1/4-20 X 1.75" HX HD SCRWGRADE 5, ZINC P | 2.000 ea |
| HW1001A38 | LOCKWASHER 3/8, ZINC PLT .688 OD, .382 I | 4.000 ea |
| 09CB3501SP | CONDUIT BOX LID FOR 09CB3001 & 09CB3002 | 1.000 ea |
| 09GS1013SP | GS FOR 09CB3501, 12CB1500 & 12CB1503 LID | 1.000 ea |
| 09FH1000 | BALDOR MOTOR FAN COVER | 1.000 ea |
| HW4600B44 | V-RING SLINGER 1.500 X 1.810 X .28 VITON | 1.000 ea |
| 10XN2520K36 | 1/4-20 X 2.25" HX HD SCRWGRADE 5, ZINC P | 4.000 ea |
| HW1001A25 | LOCKWASHER 1/4, ZINC PLT .493 OD, .255 I | 4.000 ea |
| XY3816A12 | 3/8-16 FINISHED NUT | 4.000 ea |
| HW1001A38 | LOCKWASHER 3/8, ZINC PLT .688 OD, .382 I | 4.000 ea |
| HW1001A38 | LOCKWASHER 3/8, ZINC PLT .688 OD, .382 I | 4.000 ea |
| 51XW2520A12 | .25-20 X .75, TAPTITE II, HEX WSHR SLTD | 2.000 ea |
| HW2501G25 | KEY, 3/8 SQ X 2.875 | 1.000 ea |
| LB1115N | LABEL,LIFTING DEVICE (ON ROLLS) | 1.000 ea |
| HW4500A05 | 1669B ALEM/UNIV860 GR FTG X | 1.000 ea |
| HW4500A17 | 317400 ALEMITE GREASE RELIEF | 1.000 ea |
| HA4051A00 | PLASTIC CAP FOR GREASE FITTING | 1.000 ea |

| | | |
|-------------|--|----------|
| HA4054 | SHORT T-DRAIN FITTING, .125" N.P.T. | 1.000 ea |
| MJ1000A02 | GREASE, MOBIL POLYREX EM - 124047 | 0.080 lb |
| HW4500A03 | GREASE FITTING, .125 NPT 1610(ALEMITE) 8 | 1.000 ea |
| HW4500A17 | 317400 ALEMITE GREASE RELIEF | 1.000 ea |
| HA4051A00 | PLASTIC CAP FOR GREASE FITTING | 1.000 ea |
| HA4054 | SHORT T-DRAIN FITTING, .125" N.P.T. | 1.000 ea |
| HW2500A25 | WOODRUFF KEY USA #1008 #BLOW CARBON STEE | 1.000 ea |
| MG1000Y03 | MUNSELL 2.53Y 6.70/ 4.60, GLOSS 20, | 0.050 ga |
| 85XU0407S04 | 4X1/4 U DRIVE PIN STAINLESS | 2.000 ea |
| LB1119N | WARNING LABEL | 1.000 ea |
| LC0382 | CONNECTION LABEL | 1.000 ea |
| NP3444L | ALUM SUPER-E VPWM INV READY NEMA IE3 UL | 1.000 ea |
| 09PA1000 | PACKAGING GROUP COMBINED PRINT | 1.000 ea |
| MN416A01 | TAG-INSTAL-MAINT no wire (1200/bx) 1/21 | 1.000 ea |
| LB1594 | MYLAR WEEE WHEELIE BIN SYMBOL FOR CE MOT | 1.000 ea |
| LD7020D06 | LEAD SET, 12AWG, 6 LEAD, 20" LONG LEADS | 1.000 ea |
| PE-0000003 | ZRTG PE ASSEMBLY | 1.000 ea |

AC Induction Motor Performance Data

Record # 49902

Typical performance - not guaranteed values

| Winding: 09WGZ837-R003 | | Type: 0948M | | Enclosure: TEFC | |
|------------------------|--------------|---------------------|---|------------------------|---------|
| Nameplate Data | | | 400 V, 50 Hz: Single Voltage Motor | | |
| Rated Output (HP) | 15 | Full Load Torque | 54 LB-FT | | |
| Volts | 400 | Start Configuration | direct on line | | |
| Full Load Amps | 21 | Breakdown Torque | 204 LB-FT | | |
| R.P.M. | 1450 | Pull-up Torque | 82.8 LB-FT | | |
| Hz | 50 Phase | 3 | Locked-rotor Torque | 124 LB-FT | |
| NEMA Design Code | B | KVA Code | H | Starting Current | 139 A |
| Service Factor (S.F.) | 1.15 | No-load Current | 8.2 A | | |
| NEMA Nom. Eff. | 91.4 | Power Factor | 81 | Line-line Res. @ 25°C | 0.485 Ω |
| Rating - Duty | 40C AMB-CONT | | Temp. Rise @ Rated Load | 59°C | |
| S.F. Amps | | | Temp. Rise @ S.F. Load | 73°C | |
| | | | Locked-rotor Power Factor | 36.8 | |
| | | | Rotor inertia | 2.1 lb-ft ² | |

Load Characteristics 400 V, 50 Hz, 15 HP

| % of Rated Load | 25 | 50 | 75 | 100 | 125 | 150 | S.F. |
|-----------------|------|------|------|------|------|------|------|
| Power Factor | 49 | 70 | 80 | 83 | 85 | 86 | 84 |
| Efficiency | 87 | 91.1 | 91.8 | 91.4 | 90.5 | 89.7 | 91.1 |
| Speed | 1491 | 1483 | 1477 | 1470 | 1449 | 1443 | 1457 |
| Line amperes | 9.74 | 12.8 | 16.7 | 21.3 | 26 | 31 | 24.1 |

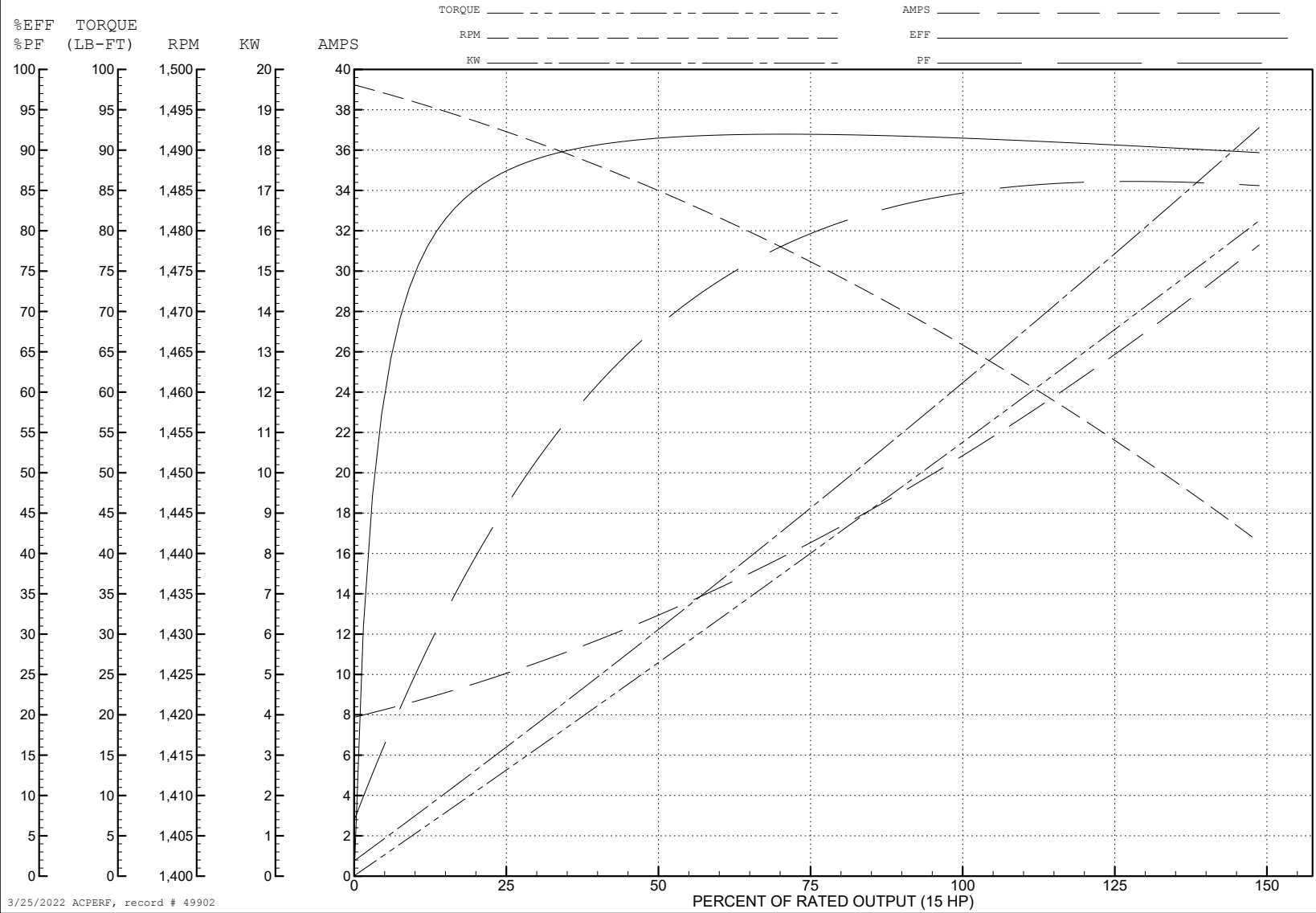
ABB Motors and Mechanical Inc.

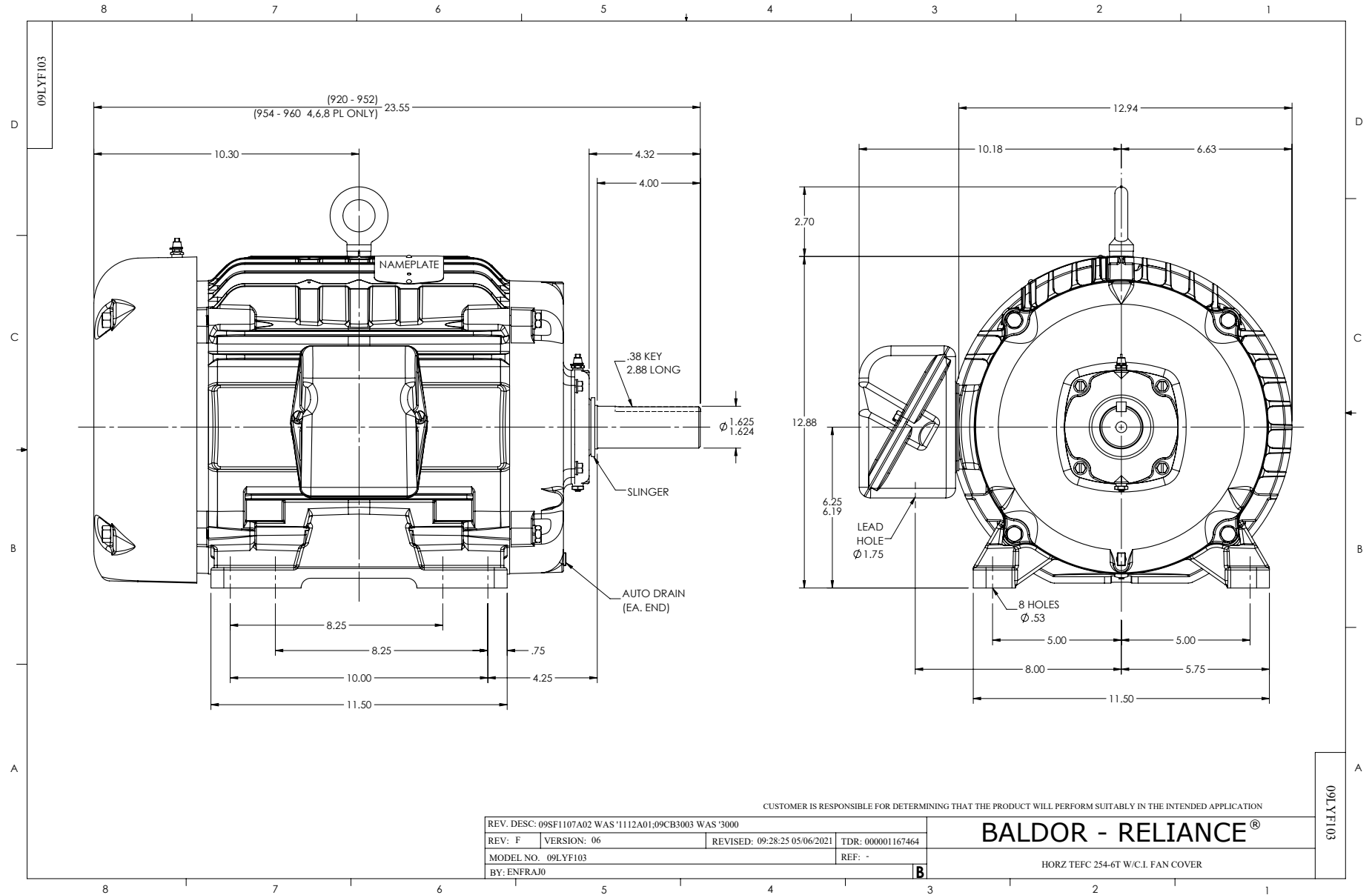
WINDING # 09WGZ837

Typical performance - not guaranteed values.

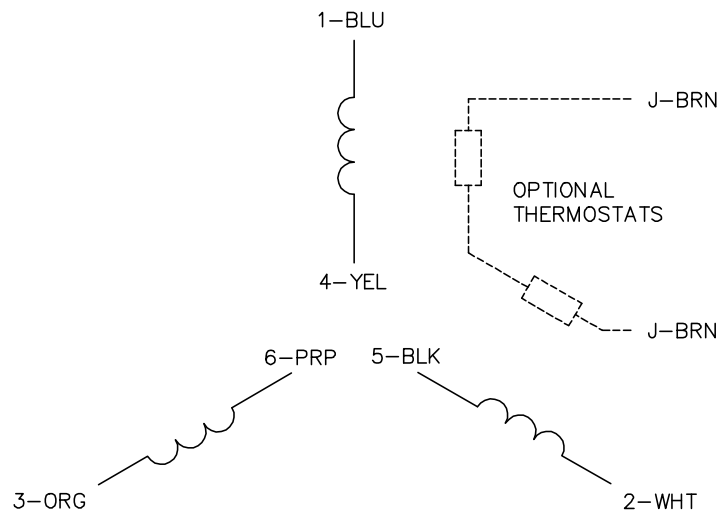
15 HP 3 PH 50 HZ 1450 RPM 400 V 0948M

TORQUES (LB-FT): PO=204 PU=82.8 LR=124 LRA=139

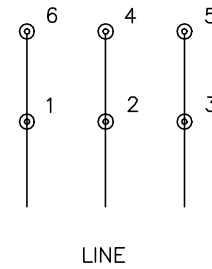




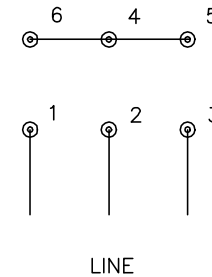
CD0382



RUN CONNECTION (1D)



START CONNECTION (1Y)



NOTES:

1. INTERCHANGE ANY TWO LINE LEADS TO REVERSE ROTATION.
2. OPTIONAL THERMOSTATS ARE PROVIDED WHEN SPECIFIED.
3. ACTUAL NUMBER OF INTERNAL PARALLEL CIRCUITS MAY BE A MULTIPLE OF THOSE SHOWN ABOVE.
4. LEAD COLORS ARE OPTIONAL. LEADS MUST ALWAYS BE NUMBERED AS SHOWN.
5. FOR ACROSS-THE-LINE STARTING, USE 'RUN' CONNECTION.

CD0382

| | | |
|-----------------------------------|------------------------------|-------------------|
| REV. DESC: ADD CLASS CONN00000007 | | |
| REV. LTR: F | VERSION: 01 | TDR: 000001099922 |
| FILE: \AAA\00005\243 | REVISED: 09:05:32 02/19/2019 | BY: ENBRIRO |
| MTL: - | © □ | |

BALDOR - RELIANCE®

3PH, SV, 6 LEADS, Y START/D RUN

SH 1 of 1