



Customer information packet

ECP83771T-5

10HP, 3475RPM, 3PH, 60HZ, 215T, 0742M, TEFC, F1

Class - CLI GP A,B,C,D

Division - Division II

Specifications

Enclosure	TEFC
Frame	215T
Frame Material	Iron
Frequency	60.00 Hz
Motor Letter Type	Three Phase
Output @ Frequency	10.000 HP @ 60 HZ
Phase	3
Synchronous Speed @ Frequency	3600 RPM @ 60 HZ
Voltage @ Frequency	575.0 V @ 60 HZ
XP Class and Group	CLIGP A,B,C,D
XP Division	Division II
Agency Approvals	CSA CSA EEV UR
Ambient Temperature	40 °C
Auxillary Box	No Auxillary Box
Auxillary Box Lead Termination	None
Base Indicator	Rigid
Bearing Grease Type	Polyrex EM (-20F +300F)
Blower	None
Constant Torque Speed Range	6
Current @ Voltage	9.000 A @ 575.0 V
Design Code	B
Drip Cover	No Drip Cover
Duty Rating	CONT
Efficiency @ 100% Load	90.2 %
Electrically Isolated Bearing	Not Electrically Isolated
Feedback Device	NO FEEDBACK
Front Face Code	Standard
Front Shaft Indicator	None
Heater Indicator	No Heater
High Voltage Full Load Amps	9.0 a

Part detail

Revision	AA
Type	AC
Mech. spec.	07K629
Base	
Status	PRD/A
Elec. spec.	07WGY302
Layout	07LYK629
Eff. date	08-29-2022
CD Diagram	CD0006
Poles	02
Leads	3#14
Proprietary	False
Created date	04-04-2012

Insulation Class	F
Inverter Code	Inverter Duty
KVA Code	H
Lifting Lugs	Standard Lifting Lugs
Locked Bearing Indicator	Locked Bearing
Max Speed	5400 rpm
Motor Lead Exit	Ko Box
Motor Lead Quantity/Wire Size	3 @ 14 AWG
Motor Lead Termination	Flying Leads
Motor Standards	NEMA
Motor Type	0742M
Mounting Arrangement	F1
Number of Poles	2
Overall Length	19.50 IN
Power Factor	91
Product Family	Super-E Chemical Processing
Pulley End Bearing Type	Ball
Pulley Face Code	Standard
Pulley Shaft Indicator	Standard
Rodent Screen	None
Service Factor	1.15
Shaft Diameter	1.375 IN
Shaft Extension Location	Pulley End
Shaft Ground Indicator	No Shaft Grounding
Shaft Rotation	Reversible
Shaft Slinger Indicator	Shaft Slinger
Speed	3475 rpm
Speed Code	Single Speed
Starting Method	Direct on line
Thermal Device - Bearing	None
Thermal Device - Winding	None
Vibration Sensor Indicator	No Vibration Sensor
Winding Thermal 1	None
Winding Thermal 2	None

XP Temp Code

T3C

Nameplate

NP3235E									
CAT.NO.	ECP83771T-5								
SPEC.	07K629Y302G1								
HP	10 TE		IP	56					
VOLTS	575								
AMPS	9.3								
R.P.M.	3500								
FRAME	215T		HZ	60		PH	3		
SER.F.	1.15	CODE	H	DES.	B	CLASS	F		
RATING	40C AMB-CONT								
SN									
DE	6307	ODE	6307						
NEMA NOM. EFF.	90.2	P.F.	91						
GUAR. MIN. EFF.	88.5	CC	010A						
T. CODE	T3C	TEMP=	160						

NP3186E

SPEC.	07K629Y302G1		
ABMA DE BRG	35BC03X30X		
ABMA ODE BRG	35BC03X30X		
GREASE	POLYREX EM		
MOTOR WEIGHT	225	ROTOR BARS	28
		STATOR BARS	36
MAX. R.P.M.	5400	MAX. KVAR	N/A
INV.TYPE	PWM		
T=	160		
CHP	60	TO	90
CT	6	TO	60
VT	3	TO	60
HTR-VOLTS	N/A	HTR-AMPS	N/A
HTR-WATTS		MAX. SPACE HEATER TEMP.	N/A

AC Induction Motor Performance Data

Record # 95364

Typical performance - not guaranteed values

Winding: 07WGY302-R003		Type: 0742M		Enclosure: TEFC			
Nameplate Data			575 V, 60 Hz: Single Voltage Motor				
Rated Output (HP)	10	Full Load Torque	14.92 LB-FT				
Volts	575	Start Configuration	direct on line				
Full Load Amps	9	Breakdown Torque	59.4 LB-FT				
R.P.M.	3475	Pull-up Torque	15.8 LB-FT				
Hz	60 Phase	3	Locked-rotor Torque	26.9 LB-FT			
NEMA Design Code	B	KVA Code	H	Starting Current	64.9 A		
Service Factor (S.F.)	1.15	No-load Current	2.72 A				
NEMA Nom. Eff.	90.2	Power Factor	91	Line-line Res. @ 25°C	1.26 Ω		
Rating - Duty	40C AMB-CONT		Temp. Rise @ Rated Load	59°C			
S.F. Amps			Temp. Rise @ S.F. Load	73°C			
			Locked-rotor Power Factor	30.4			
			Rotor inertia	0.383 lb-ft ²			

Load Characteristics 575 V, 60 Hz, 10 HP

% of Rated Load	25	50	75	100	125	150	S.F.
Power Factor	68	86	90	91	92	92	92
Efficiency	77.9	85.8	87.6	90.2	87.8	86.8	88
Speed	3577	3553	3529	3503	3473	3440	3485
Line amperes	3.52	5.16	7.17	9.3	11.59	14.18	10.7

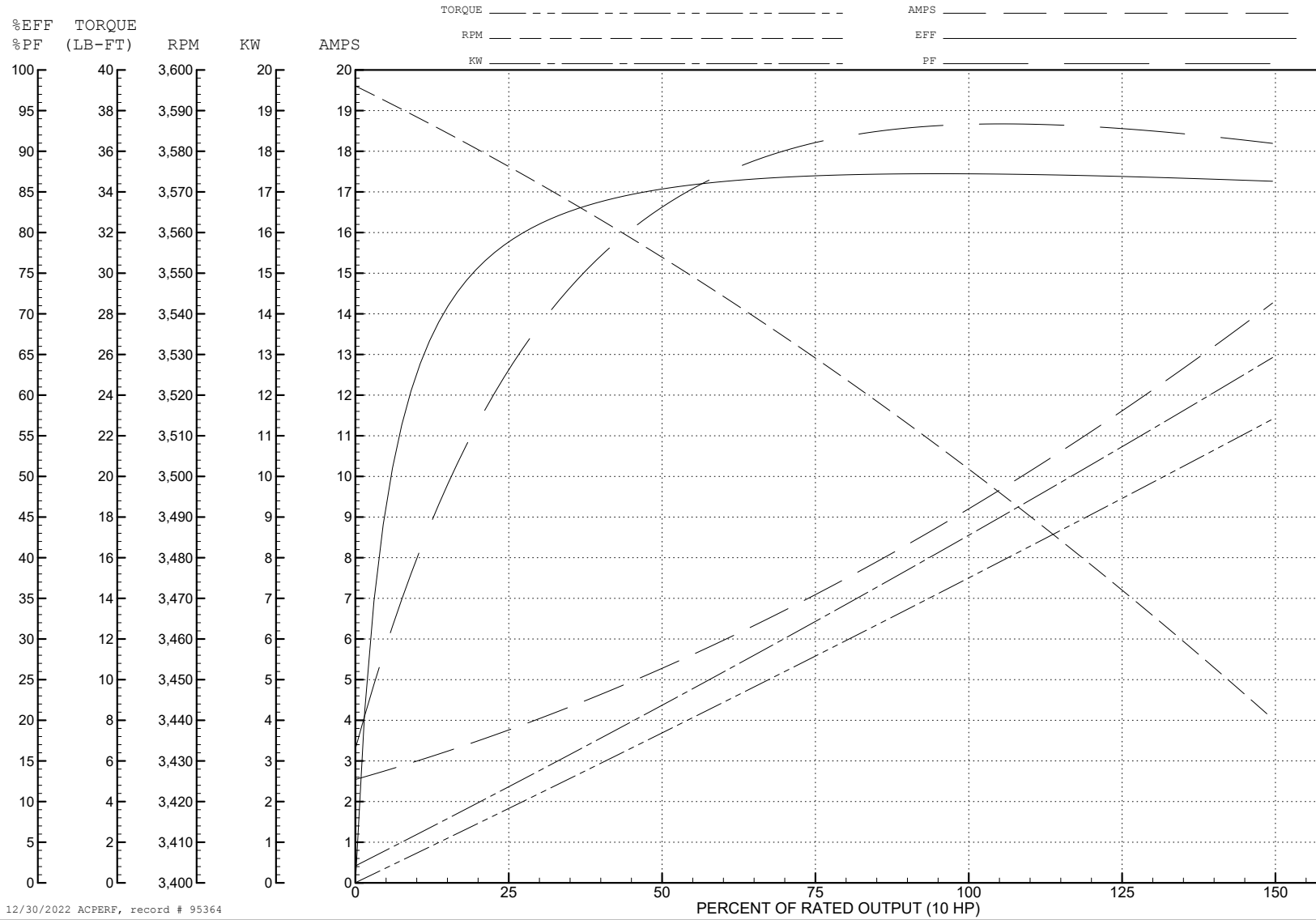
ABB Motors and Mechanical Inc.

WINDING # 07WGY302

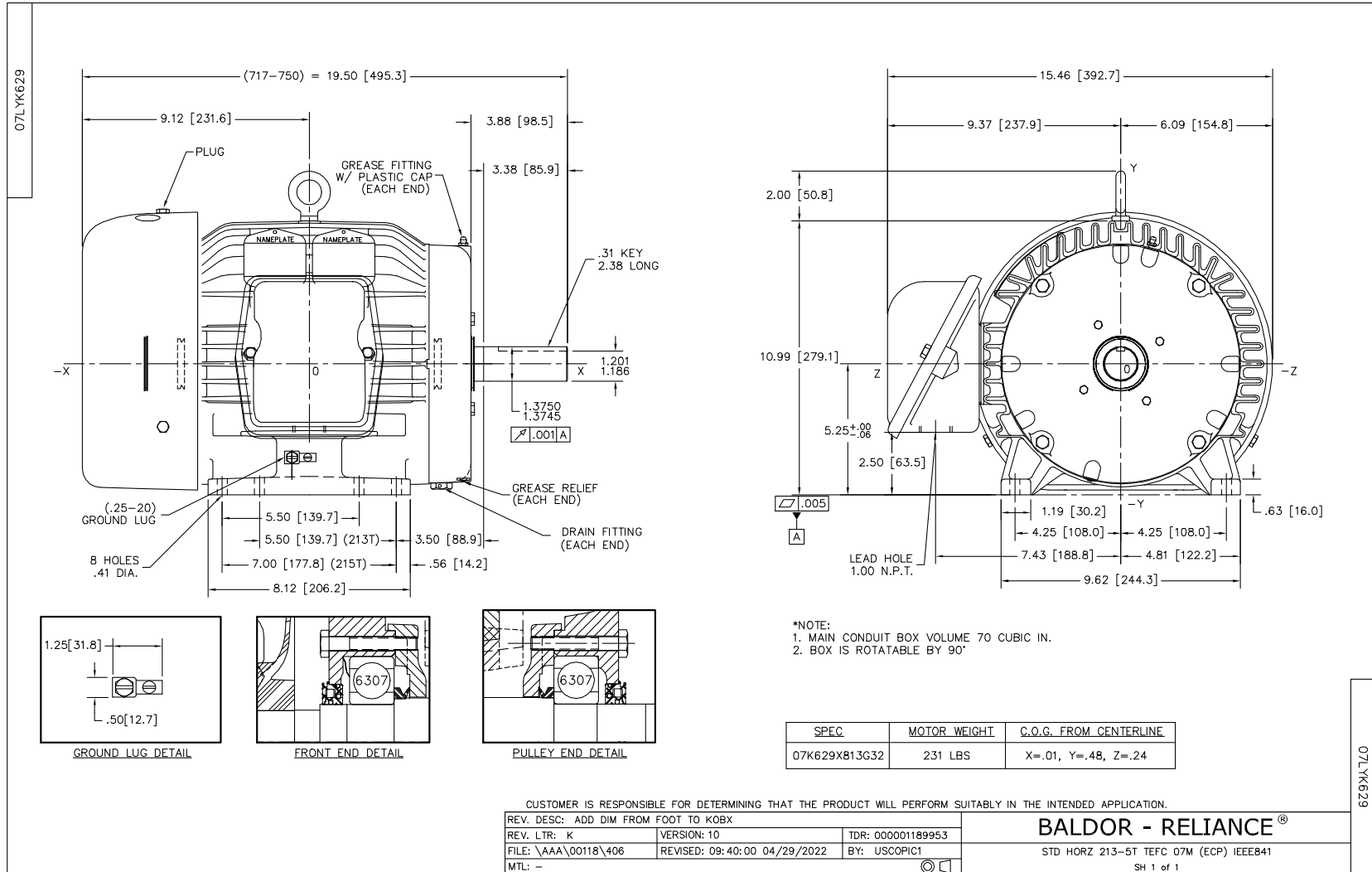
Typical performance - not guaranteed values.

10 HP 3 PH 60 HZ 3475 RPM 575 V 0742M

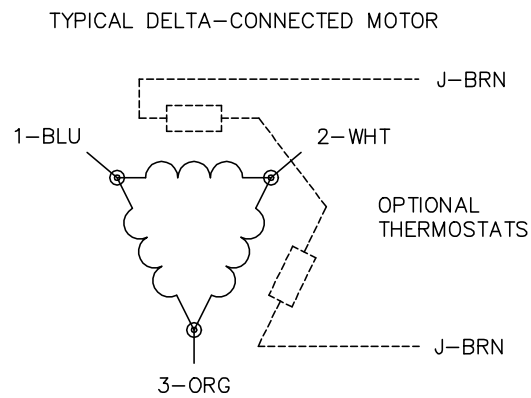
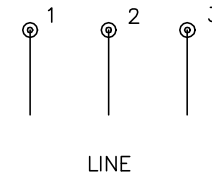
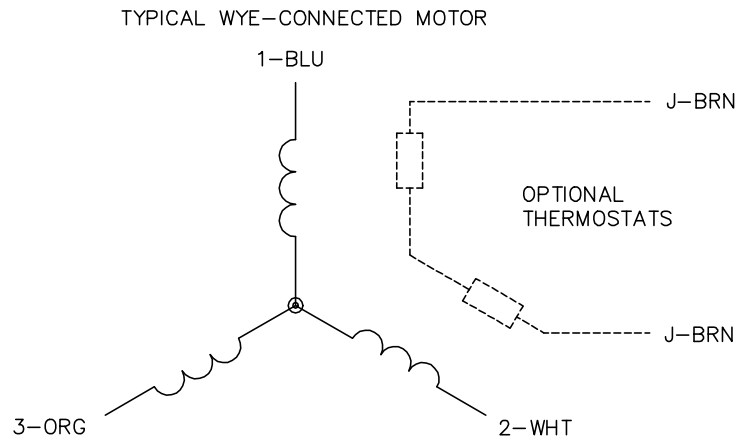
TORQUES (LB-FT): PO=59.4 PU=15.8 LR=26.9 LRA=64.9



12/30/2022 ACPERF, record # 95364



CD0006



NOTES:

1. THREE LEAD MOTOR MAY BE EITHER WYE CONNECTED OR DELTA CONNECTED.
2. INTERCHANGE ANY TWO LINE LEADS TO REVERSE ROTATION.
3. OPTIONAL THERMOSTATS ARE PROVIDED WHEN SPECIFIED.
4. ACTUAL NUMBER OF INTERNAL PARALLEL CIRCUITS MAY VARY.
5. LEAD COLORS ARE OPTIONAL. LEADS MUST BE NUMBERED AS SHOWN.

CD0006

REV. DESC: ADD CLASS CONN00000007		
REV. LTR: E	VERSION: 01	TDR: 000001099922
FILE: \AAA\00005\141	REVISED: 10:24:49 02/19/2019	BY: ENBRIRO
MTL: -		© □

BALDOR - RELIANCE®

3PH, SV, 3 LEADS, WYE OR DELTA CONNECTED

SH 1 of 1