



Customer information packet

ECP83664T-5

2HP, 1165RPM, 3PH, 60HZ, 184T, 0642M, TEFC, F1

Class - None

Division - Not Applicable

Specifications

Enclosure	TEFC
Frame	184T
Frame Material	Iron
Frequency	60.00 Hz
Motor Letter Type	Three Phase
Output @ Frequency	2.000 HP @ 60 HZ
Phase	3
Synchronous Speed @ Frequency	1200 RPM @ 60 HZ
Voltage @ Frequency	575.0 V @ 60 HZ
XP Class and Group	None
XP Division	Not Applicable
Agency Approvals	CSA CSA EEV UR
Ambient Temperature	40 °C
Auxillary Box	No Auxillary Box
Auxillary Box Lead Termination	None
Base Indicator	Rigid
Bearing Grease Type	Polyrex EM (-20F +300F)
Blower	None
Constant Torque Speed Range	1.8
Current @ Voltage	2.500 A @ 575.0 V
Design Code	B
Drip Cover	No Drip Cover
Duty Rating	CONT
Efficiency @ 100% Load	88.5 %
Electrically Isolated Bearing	Not Electrically Isolated
Feedback Device	NO FEEDBACK
Front Face Code	Standard
Front Shaft Indicator	None
Heater Indicator	No Heater
High Voltage Full Load Amps	2.5 a

Part detail

Revision	AC
Type	AC
Mech. spec.	06H759
Base	
Status	PRD/A
Elec. spec.	06WGX236
Layout	06LYH759
Eff. date	08-15-2022
CD Diagram	CD0006
Poles	06
Leads	3#16
Proprietary	False
Created date	12-06-2010

Insulation Class	F
Inverter Code	Inverter Duty
KVA Code	H
Lifting Lugs	Standard Lifting Lugs
Locked Bearing Indicator	Locked Bearing
Max Speed	1800 rpm
Motor Lead Exit	Ko Box
Motor Lead Quantity/Wire Size	3 @ 16 AWG
Motor Lead Termination	Ring Terminals
Motor Standards	NEMA
Motor Type	0642M
Mounting Arrangement	F1
Number of Poles	6
Overall Length	15.93 IN
Power Factor	68
Product Family	Super-E Chemical Processing
Pulley End Bearing Type	Ball
Pulley Face Code	Standard
Pulley Shaft Indicator	Standard
Rodent Screen	None
Service Factor	1.15
Shaft Diameter	1.125 IN
Shaft Extension Location	Pulley End
Shaft Ground Indicator	No Shaft Grounding
Shaft Rotation	Reversible
Shaft Slinger Indicator	Shaft Slinger
Speed	1165 rpm
Speed Code	Single Speed
Starting Method	Direct on line
Thermal Device - Bearing	None
Thermal Device - Winding	None
Vibration Sensor Indicator	No Vibration Sensor
Winding Thermal 1	None
Winding Thermal 2	None

XP Temp Code

T3C

Nameplate

NP4328E									
CAT.NO.	ECP83664T-5								
SPEC.	06H759X236G1								
HP	2 TE		IP	56					
VOLTS	575								
AMPS	2.5								
R.P.M.	1165								
FRAME	184T		HZ	60		PH	3		
SER.F.	1.15	CODE	H	DES.	B	CLASS	F		
RATING	40C AMB-CONT								
SN									
DE	6206	ODE	6206						
NEMA NOM. EFF.	88.5	P.F.	68						
GUAR. MIN. EFF.	86.5	CC	010A						
T. CODE	T3C	TEMP=	160						

NP3186E

SPEC.	06H759X236G1		
ABMA DE BRG	30BC02X30X		
ABMA ODE BRG	30BC02X30X		
GREASE	POLYREX EM		
MOTOR WEIGHT	128	ROTOR BARS	27
		STATOR BARS	36
MAX. R.P.M.	1800	MAX. KVAR	1.0
INV.TYPE	PWM		
T=	160		
CHP	60	TO	90
CT	1.8	TO	60
VT	0-	TO	60
HTR-VOLTS	N/A	HTR-AMPS	N/A
HTR-WATTS		MAX. SPACE HEATER TEMP.	N/A

AC Induction Motor Performance Data

Record # 92343

Typical performance - not guaranteed values

Winding: 06WGX236-R006		Type: 0642M		Enclosure: TEFC	
Nameplate Data			575 V, 60 Hz: Single Voltage Motor		
Rated Output (HP)		2	Full Load Torque		9 LB-FT
Volts		575	Start Configuration		direct on line
Full Load Amps		2.5	Breakdown Torque		31.3 LB-FT
R.P.M.		1165	Pull-up Torque		16.7 LB-FT
Hz	60 Phase	3	Locked-rotor Torque		19.9 LB-FT
NEMA Design Code	B KVA Code	H	Starting Current		20 A
Service Factor (S.F.)		1.15	No-load Current		1.47 A
NEMA Nom. Eff.	88.5 Power Factor	68	Line-line Res. @ 25°C		8.07 Ω
Rating - Duty		40C AMB-CONT	Temp. Rise @ Rated Load		27°C
S.F. Amps			Temp. Rise @ S.F. Load		32°C
			Locked-rotor Power Factor		28.6
			Rotor inertia		0.395 lb-ft ²

Load Characteristics 575 V, 60 Hz, 2 HP

% of Rated Load	25	50	75	100	125	150	S.F.
Power Factor	30	48	60	68	73	75	71
Efficiency	80.4	87.1	88.5	88.5	87.6	86.6	88.1
Speed	1193	1186	1178	1170	1161	1150	1165
Line amperes	1.57	1.8	2.13	2.5	2.94	3.45	2.76

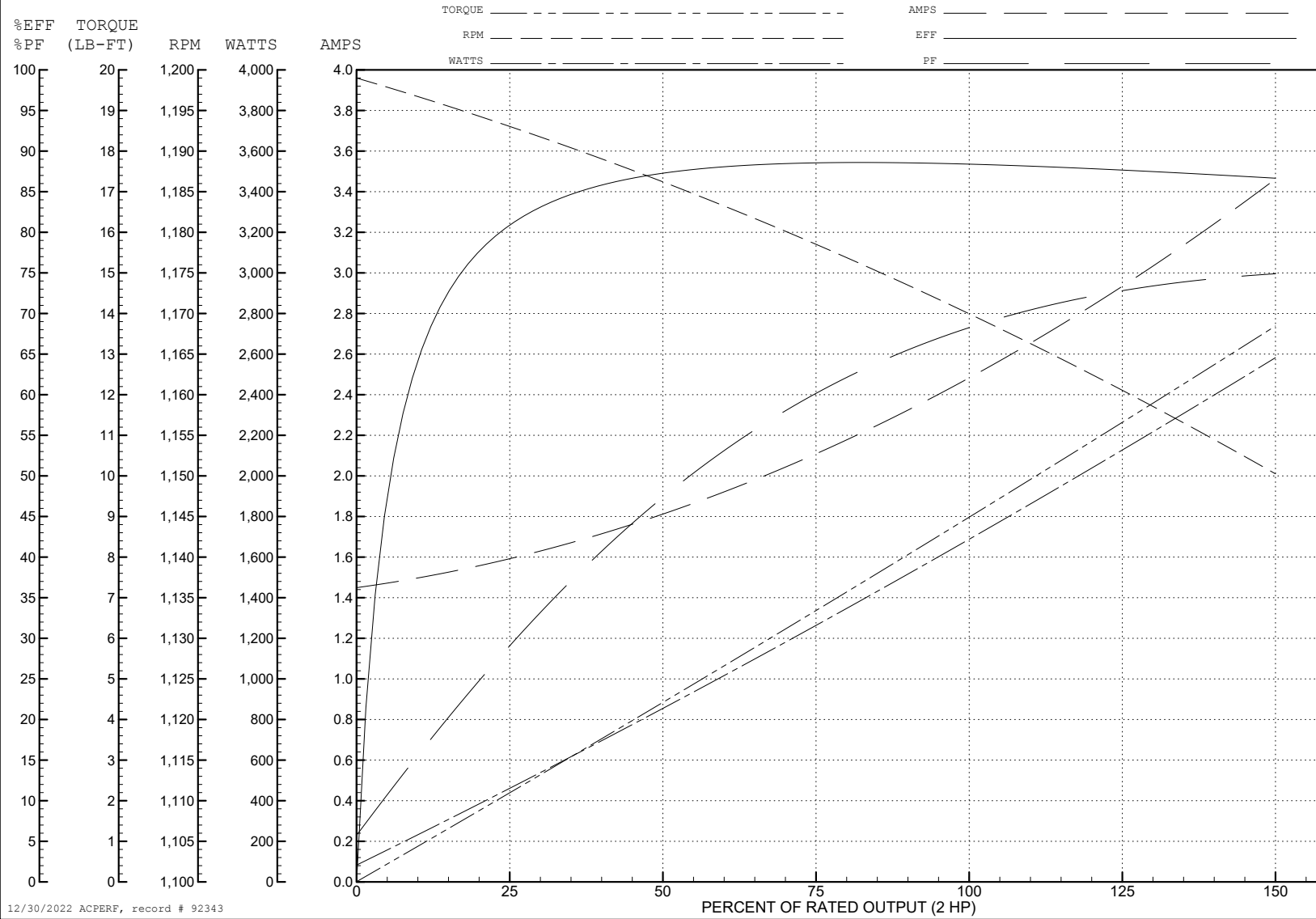
ABB Motors and Mechanical Inc.

WINDING # 06WGX236

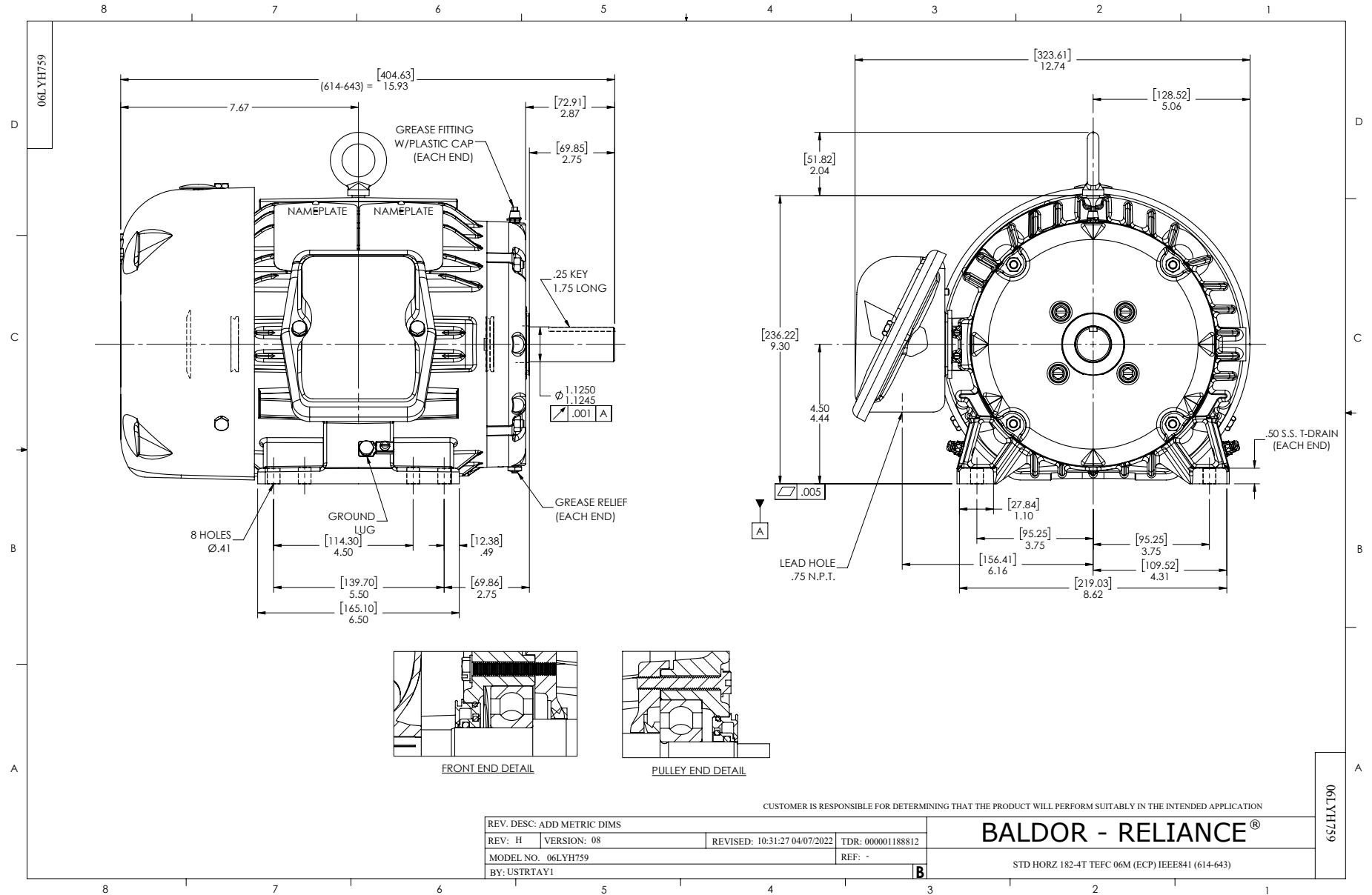
Typical performance - not guaranteed values.

2 HP 3 PH 60 HZ 1165 RPM 575 V 0642M

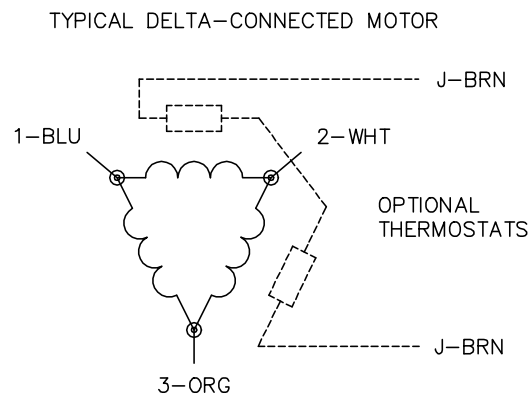
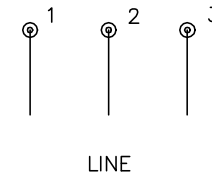
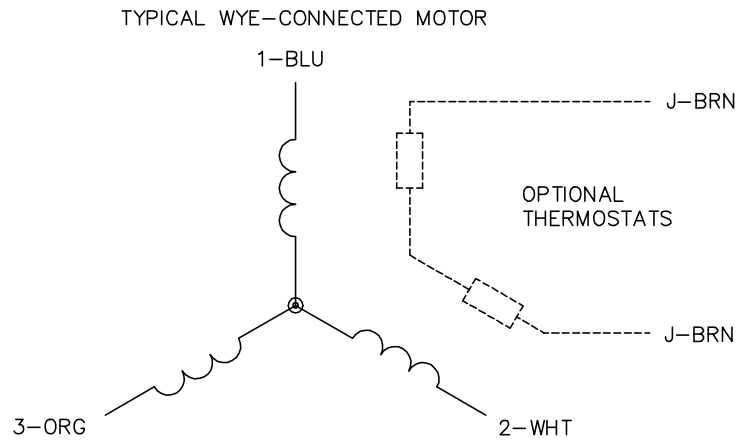
TORQUES (LB-FT): PO=31.3 PU=16.7 LR=19.9 LRA=20



12/30/2022 ACPERF, record # 92343



CD0006



NOTES:

1. THREE LEAD MOTOR MAY BE EITHER WYE CONNECTED OR DELTA CONNECTED.
2. INTERCHANGE ANY TWO LINE LEADS TO REVERSE ROTATION.
3. OPTIONAL THERMOSTATS ARE PROVIDED WHEN SPECIFIED.
4. ACTUAL NUMBER OF INTERNAL PARALLEL CIRCUITS MAY VARY.
5. LEAD COLORS ARE OPTIONAL. LEADS MUST BE NUMBERED AS SHOWN.

CD0006

REV. DESC: ADD CLASS CONN00000007		
REV. LTR: E	VERSION: 01	TDR: 000001099922
FILE: \AAA\00005\141	REVISED: 10:24:49 02/19/2019	BY: ENBRIRO
MTL: -	© □	

BALDOR - RELIANCE®

3PH, SV, 3 LEADS, WYE OR DELTA CONNECTED

SH 1 of 1