

BALDOR • RELIANCE

Customer information packet

CEM4400TS

100HP, 1785RPM, 3PH, 60HZ, 405TSC, TEFC, F1

Class - None

Division - Not Applicable

Specifications

Enclosure	TEFC
Frame	405TSC
Frame Material	Iron
Frequency	60.00 Hz
Motor Letter Type	Three Phase
Output @ Frequency	100.000 HP @ 60 HZ
Phase	3
Synchronous Speed @ Frequency	1800 RPM @ 60 HZ
Voltage @ Frequency	230.0 V @ 60 HZ 460.0 V @ 60 HZ
XP Class and Group	None
XP Division	Not Applicable
Agency Approvals	CSA EEV CCSA US
Ambient Temperature	40 °C
Auxillary Box	No Auxillary Box
Base Indicator	Rigid
Bearing Grease Type	Polyrex EM (-20F +300F)
Current @ Voltage	112.000 A @ 460.0 V 224.000 A @ 230.0 V
Design Code	B
Drip Cover	No Drip Cover
Duty Rating	CONT
Efficiency @ 100% Load	95.4 %
Feedback Device	NO FEEDBACK
Heater Indicator	No Heater
High Voltage Full Load Amps	112.0 a
Insulation Class	F
Inverter Code	Inverter Ready
KVA Code	G
Lifting Lugs	Standard Lifting Lugs
Motor Lead Quantity/Wire Size	3 @ 2 AWG

Part detail

Revision	F
Type	AC
Mech. spec.	
Base	
Status	PRD/A
Elec. spec.	A40WGO692
Layout	611740-003-SH1
Eff. date	11-01-2021
CD Diagram	416820-002
Poles	04
Leads	3#2,6#4
Proprietary	False
Created date	08-08-2014

Motor Standards	NEMA
Motor Type	A40064M
Mounting Arrangement	F1
Number of Poles	4
Overall Length	35.31 IN
Power Factor	87
Product Family	General Industrial
Pulley End Bearing Type	Ball
Pulley Face Code	C-Face
Service Factor	1.15
Shaft Ground Indicator	No Shaft Grounding
Shaft Rotation	Reversible
Shaft Slinger Indicator	No Slinger
Speed	1785 rpm
Speed Code	Single Speed
Starting Method	Direct on line
Thermal Device - Bearing	None
Thermal Device - Winding	None

Nameplate

NP2496L	
MOBIL POLYREX EM	

NP2383L

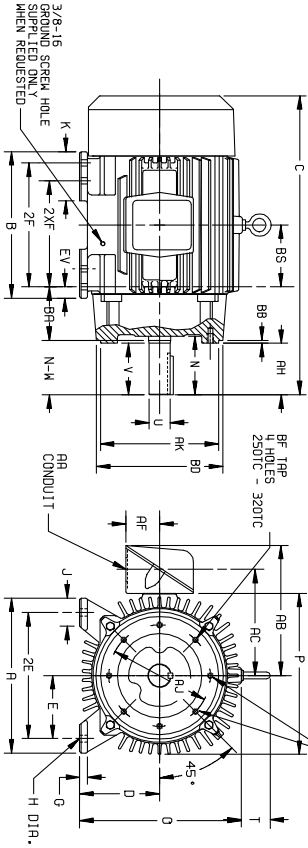
CAT.NO.	CEM4400TS	SPEC NO.	A40-6214-0692						
HP	100	AMPS	224/112		VOLTS	230/460		DESIGN	B
FRAME	405TSC	RPM	1785	HZ	60	AMB	40	SF	1.15
DRIVE END BEARING	80BC03J30X	PHASE	3	DUTY	CONT	INSUL.CLASS	F		
OPP D.E. BEARING	80BC03J30X	TYPE	P	ENCL	TEFC	CODE	G		
SER.NO.		POWER FACTOR	87		NEMA-NOM-EFFICIENCY	95.4			
NEMA NOM/CSA QUOTED EFF		MAX CORR KVAR	18	GUARANTEED EFFICIENCY	94.5				
		MOTOR WEIGHT							

Parts list

Part number	Description	Quantity
SA285085	SA A40-6214-0692	1.000 ea
RA271342	RA A40-6214-0692	1.000 ea
421948032	LABEL, MYLAR	1.000 ea
NP2496L	MOTOR LUBE NAMEPLATE	1.000 ea
000613006PU	N/P (RELEASE QTY 10,000) UL CSA LABEL	1.000 ea
000692000VD	LABEL WARNING	1.000 ea
NP2383L	SUPER-E ,SS, CC, CSA-C US, CSA EEV	1.000 ea
089412051B	BRKT 400 089412051WCD	1.000 ea
415072001B	CLAMP	1.000 ea
083198036A	FANCV BLKT 400	1.000 ea
034180012DA	KEY 1X4X1/4X1-1/2 L	1.000 ea
078548001R	FAN KB 234/150 (84) 400	1.000 ea
004824015A	GREASE POLYREX EM	0.880 lb
032018016EK	HHCS 5/8-11X2 PLATED 032018016ER	4.000 ea
032018010CK	HHCS 3/8-16X1-1/4 PLTD. 032018010CR	4.000 ea
032018030CK	HHCS 3/8-16X3-3/4 PLATED	3.000 ea
415096002A	CPLG 1/8 HEX TYPE	1.000 ea
410700000DA	WAVY SPRING WASHER	1.000 ea
035000001G	GREASE RELIEF FITTING, ALEMITE 317400	1.000 ea
035000001G	GREASE RELIEF FITTING, ALEMITE 317400	1.000 ea
034000014AB	WSH ID.406 OD.812 TH.065	4.000 ea
034530060AB	P/NIP 1/8X7-1/2 GALV.	1.000 ea
034690001AB	1/8" NPT SQHDPLG	1.000 ea
034600001AA	BUSH 1/4TO1/8 BLACK	1.000 ea
034690001AB	1/8" NPT SQHDPLG	1.000 ea
034600001AA	BUSH 1/4TO1/8 BLACK	1.000 ea
089412062A	BRKT 400 089416053WCD	1.000 ea
032018016EK	HHCS 5/8-11X2 PLATED 032018016ER	4.000 ea
032018032CK	HHCS 3/8-16X4 PLATED	3.000 ea
077176000L	C/BOX, PAINTED 440	1.000 ea
077176001A	CBOXC, PAINTED 360-400	1.000 ea

043292000AJ	GASK 320-400	1.000 ea
402731001A	GASK 360-440	1.000 ea
418150003A	GREASE FITTING CAP	1.000 ea
032018005DL	1/2-13 X 5/8 SILICON BRONZE HHCS	1.000 ea
MG1025Y17	WILKOFAS, 789.701, SUPER E PEARL GOLD	1.000 ga
032018005AK	HHCS 1/4-20X5/8 PLATED	4.000 ea
032018008CK	HHCS 3/8-16X1L PLATED	4.000 ea
035000001A	ALFTG 1/8" 1610-BL	1.000 ea
415000115H	T/LUG #2AWG-4/0AWG	1.000 ea
406099000A	PLUG - FAN COVER 320-440	1.000 ea
048977006C	GRFTG - XP	1.000 ea
035000001A	ALFTG 1/8" 1610-BL	1.000 ea
418150003A	GREASE FITTING CAP	1.000 ea
033775004EA	DRSCR #6-1/4 304 S.S.	2.000 ea
034180022GA	KEY 1/2X1/2X2-3/4 L	1.000 ea
604797045	STD. 400 FRAME SKID	1.000 ea
032510024D	CARRIAGE BOLT - 444	2.000 ea
034001014AB	FLAT WASHER 3/8"PLATED	2.000 ea
034001016AB	WSHR .562ID 1.375OD .109	2.000 ea
033300014AC	HEX NUT, SHIPPING - 400	2.000 ea
604799003C	PLASTIC BAG 42X32X46	1.000 ea

DUTY MASTER ALTERNATING CURRENT MOTORS
 SQUIRREL-CAGE INDUCTION COOLING: FAN COOLED
 ENCLOSURE: TOTALLY ENCLOSED
 MOUNTING: FOOT, NEMA "C" FACE
 FRAMES 250TC THRU 440TC



DIMENSIONS ARE IN INCHES. SEE SHEET 2 FOR DIMENSIONS IN MILLIMETERS

FRAME	A	D(2)	E	G	H	J	K	EV	O	P	T	STEEL TERMINAL BOX				BF	TD	MINI DEPTH	AL	AK		
												AA	AB	AC	AF							
254TC-250TC	12.50	6.25	5.00	.75	.56	2.50	---	1.00	13.25	5.44	1-1/4	10.75	8.75	2.50	4.75	2.5	9.00	1/2-13	.75	9.00	10.500	
294TC-280TC	13.75	7.00	5.50	.75	.56	2.50	---	1.00	14.75	14.88	5.44	1-1/2	12.75	10.00	3.19	4.75	2.5	11.25	1/2-13	.75	11.00	12.500
324TC-320TC	15.50	8.00	6.25	.88	.69	2.75	4.50	1.38	16.69	17.00	6.44	2	13.19	11.44	4.25	5.25	3.12	5/8-11	.94	11.00	12.500	
364TC-360TC	17.00	9.00	7.00	.88	.69	2.75	3.88	1.38	18.50	19.50	6.94	2	18.06	14.00	5.38	5.88	2.5	3/00	5/8-11	.94	11.00	12.500
404TC-400TC	19.00	10.00	8.00	1.12	.81	3.25	4.62	1.13	21.31	22.50	8.94	3	19.31	15.25	5.38	6.62	2.5	3/12	5/8-11	.94	11.00	12.500
444TC-440TC	21.00	11.00	9.00	1.12	.81	3.25	5.25	1.25	23.38	25.25	9.25	3	23.38	18.12	6.50	7.50	2.5	16.75	5/8-11	.94	14.00	16.000

FRAME	SIZE	C	BS	B	ZF	N	AH	SHAFT AND KEY		WGHT (LBS.)			
								V	U(3)				
254TC	25.06	5.00	12.00	---	8.25	4.06	3.75	4.00	1.625	3.75	2.88	3.75	
294TC	27.44	5.50	12.00	10.00	---	4.06	3.75	4.00	1.625	3.75	2.88	3.75	
324TC	27.44	6.50	13.00	---	9.50	5.00	4.38	4.62	1.875	4.38	5.00	3.25	4.45
364TC	26.06	6.50	13.00	---	9.50	3.62	3.00	2.25	1.625	3.00	3.75	1.88	4.45
404TC	27.44	6.50	13.00	---	9.50	3.62	3.00	2.25	1.625	3.00	3.75	1.88	4.45
444TC	26.06	6.50	13.00	---	9.50	3.62	3.00	2.25	1.625	3.00	3.75	1.88	4.45
250TC	26.06	6.50	13.00	---	9.50	3.62	3.00	2.25	1.625	3.00	3.75	1.88	4.45
290TC	26.06	6.50	13.00	---	9.50	3.62	3.00	2.25	1.625	3.00	3.75	1.88	4.45
320TC	26.06	6.50	13.00	---	9.50	3.62	3.00	2.25	1.625	3.00	3.75	1.88	4.45
360TC	26.06	6.50	13.00	---	9.50	3.62	3.00	2.25	1.625	3.00	3.75	1.88	4.45
400TC	26.06	6.50	13.00	---	9.50	3.62	3.00	2.25	1.625	3.00	3.75	1.88	4.45
440TC	26.06	6.50	13.00	---	9.50	3.62	3.00	2.25	1.625	3.00	3.75	1.88	4.45
250TC	30.44	6.00	14.75	---	10.50	4.62	3.50	3.75	2.125	3.50	5.00	3.88	5.95
290TC	30.44	6.00	14.75	---	10.50	4.62	3.50	3.75	2.125	3.50	5.00	3.88	5.95
320TC	30.44	6.00	14.75	---	10.50	4.62	3.50	3.75	2.125	3.50	5.00	3.88	5.95
360TC	30.44	6.00	14.75	---	10.50	4.62	3.50	3.75	2.125	3.50	5.00	3.88	5.95
400TC	30.44	6.00	14.75	---	10.50	4.62	3.50	3.75	2.125	3.50	5.00	3.88	5.95
440TC	30.44	6.00	14.75	---	10.50	4.62	3.50	3.75	2.125	3.50	5.00	3.88	5.95
445TC	40.88	8.25	19.00	---	14.50	5.19	4.50	4.75	2.375	4.50	6.25	3.00	17.82
445TC	40.88	8.25	19.00	---	14.50	5.19	4.50	4.75	2.375	4.50	6.25	3.00	17.82

- (1) SPECIAL DIMENSIONS APPLYING TO THIS ORDER ON THIS LINE. CONDUIT BOX LOCATED ON OPPOSITE SIDE WHEN F-2-W-1, W-4-W-5-W-7, OR C-1 MOUNTING IS SPECIFIED.
- (2) "D" VARIES [250TC - 320TC +.00, -.03] [360TC - 440TC +.00, -.06]. IF MOUNTING CLEARANCE DETAILS ARE REQUIRED, CONSULT FACTORY.
- (3) "U" VARIES [6.25 AND LARGER +.000, -.001]. MAXIMUM PERMISSIBLE SHAFT RUNOUT WHEN MEASURED AT END OF STD. SHAFT EXTENSION IS .002 T.I.R. UP TO AND INCLUDING 1.625 DIA. AND .003 T.I.R. 1.625 DIA. TO 5 INCH DIA.
- (4) ALL FRAMES HAVE EIGHT MOUNTING HOLES FOR DUAL MOUNTING. FACE RUNOUT AND [250TC - 280TC INCL. .004 MAX. T.I.R. ECCENTRICITY] [320TC - 440TC INCL. .007 MAX. T.I.R.]
- (5) MOTOR WEIGHTS MAY VARY BY 15% DEPENDING UPON RATING.
- (6) "K" VARIES [250TC - 280TC +.000, -.003] [320TC - 440TC +.000, -.005]
- (7) "N-W" VARIES +.00, -.25

FRAME: _____ TYPE: _____ CERTIFIED FOR: _____
 ORDER: _____ ITEM: _____ HP: _____ RPM: _____ PH: _____ HZ: _____ VOLTS: _____
 RELIANCE SALES ORDER: _____ APPROVED BY: _____ DATE: _____

CUSTOMER IS RESPONSIBLE FOR DETERMINING THAT MOTOR PERFORMANCE IS SUITABLE IN THE APPLICATION.

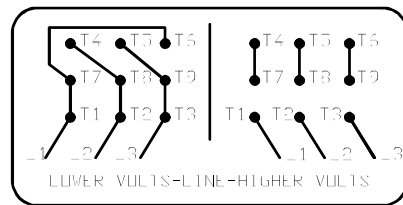
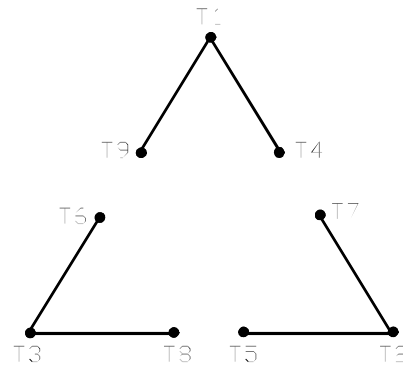
REV. DESC: REMOVING TITLE BLOCK	VERSION: 01	TDR: 000000441900
FILE: \RAG\00003\380	REVISED: 09:15:38 08/28/2007	BY: RAGRKH
MTL: -		

Baldor • Dodge • Reliance

DIM SHEET 250TC THRU 440TC

416820-002

A-C METER
 CONNECTION DIAGRAM
 STANDARD 9 LEAD DELTA-CONNECTED



(N.P. 1575-B)

416820-002

REV. DESC: FONT CHANGE FOR PDF SEARCHABLE		
REV. LTR: A	VERSION: 01	TDR: 000001009382
FILE: \MGA\00000\661	REVISED: 02:46:19 02/13/2020	BY: MGHMTT
MTL: -		© □

BALDOR - RELIANCE®

CONN DIAG - STANDARD 9 LEAD, DELTA-CONNECTED

SH 1 of 1