



Customer information packet

CECP83771T-4

10HP, 3475RPM, 3PH, 60HZ, 215TC, 0742M, TEFC, F
ELECTRIC MOTOR WHOLESAL.COM
Class - CLI GP A,B,C,D
Division - Division II

Specifications

Enclosure	TEFC
Frame	215TC
Frame Material	Iron
Frequency	60.00 Hz
Motor Letter Type	Three Phase
Output @ Frequency	10.000 HP @ 60 HZ
Phase	3
Synchronous Speed @ Frequency	3600 RPM @ 60 HZ
Voltage @ Frequency	460.0 V @ 60 HZ
XP Class and Group	CLIGP A,B,C,D
XP Division	Division II
Agency Approvals	CSA CSA EEV UR
Ambient Temperature	40 °C
Auxillary Box	No Auxillary Box
Auxillary Box Lead Termination	None
Base Indicator	Rigid
Bearing Grease Type	Polyrex EM (-20F +300F)
Blower	None
Constant Torque Speed Range	6
Current @ Voltage	11.300 A @ 460.0 V
Design Code	B
Drip Cover	No Drip Cover
Duty Rating	CONT
Efficiency @ 100% Load	91.0 %
Electrically Isolated Bearing	Not Electrically Isolated
Feedback Device	NO FEEDBACK
Front Face Code	Standard
Front Shaft Indicator	None
Heater Indicator	No Heater
High Voltage Full Load Amps	11.3 a

Part detail

Revision	Z
Type	AC
Mech. spec.	07M320
Base	
Status	PRD/A
Elec. spec.	07WGY930
Layout	07LYM320
Eff. date	08-04-2022
CD Diagram	CD0006
Poles	02
Leads	3#14
Proprietary	False
Created date	08-21-2012

Insulation Class	F
Inverter Code	Inverter Duty
KVA Code	H
Lifting Lugs	Standard Lifting Lugs
Locked Bearing Indicator	Locked Bearing
Max Speed	5400 rpm
Motor Lead Exit	Ko Box
Motor Lead Quantity/Wire Size	3 @ 14 AWG
Motor Lead Termination	Flying Leads
Motor Standards	NEMA
Motor Type	0742M
Mounting Arrangement	F1
Number of Poles	2
Overall Length	20.23 IN
Power Factor	91
Product Family	Chem Process S/P 32-8 IEEE 841
Pulley End Bearing Type	Ball
Pulley Face Code	C-Face
Pulley Shaft Indicator	Standard
Rodent Screen	None
Service Factor	1.15
Shaft Diameter	1.375 IN
Shaft Extension Location	Pulley End
Shaft Ground Indicator	No Shaft Grounding
Shaft Rotation	Reversible
Shaft Slinger Indicator	Shaft Slinger
Speed	3500 rpm
Speed Code	Single Speed
Starting Method	Direct on line
Thermal Device - Bearing	None
Thermal Device - Winding	None
Vibration Sensor Indicator	No Vibration Sensor
Winding Thermal 1	None
Winding Thermal 2	None

XP Temp Code

T3C

Nameplate

NP3235E									
CAT.NO.	CECP83771T-4								
SPEC.	07M320Y930G1								
HP	10 TE		IP	56					
VOLTS	460								
AMPS	11.3								
R.P.M.	3500								
FRAME	215TC		HZ	60		PH	3		
SER.F.	1.15	CODE	H	DES.	B	CLASS	F		
RATING	40C AMB-CONT								
SN									
DE	6307	ODE	6307						
NEMA NOM. EFF.	91	P.F.	91						
GUAR. MIN. EFF.	89.5	CC	010A						
T. CODE	T3C	TEMP=	160						

NP3186E

SPEC.	07M320Y930G1		
ABMA DE BRG	35BC03X30X		
ABMA ODE BRG	35BC03X30X		
GREASE	POLYREX EM		
MOTOR WEIGHT	225	ROTOR BARS	28
		STATOR BARS	36
MAX. R.P.M.	5400	MAX. KVAR	N/A
INV.TYPE	PWM		
T=	160		
CHP	60	TO	90
CT	6	TO	60
VT	3	TO	60
HTR-VOLTS	N/A	HTR-AMPS	N/A
HTR-WATTS		MAX. SPACE HEATER TEMP.	N/A

Parts list

Part number	Description	Quantity
SA250198	SA 07M320Y930G1	1.000 ea
RA237054	RA 07M320Y930G1	1.000 ea
36FN3000C02SP	EXFN, PLASTIC, 5.25 OD, 1.175 ID	1.000 ea
HW3201A05	3/8-16 EYEBOLT	1.000 ea
09CB1002A05G	CONDUIT BOX, 1.00 N.P.T. (GRAY)	1.000 ea
RM1017	LEAD SEPERATOR GASKET MODEL 307 1/8" THK	1.000 ea
19XW2520A16	SCREW,1/4-20X1 TAPTITE-II OR ROLOC 91	2.000 ea
11XW1032G06	10-32 X .38, TAPTITE II, HEX WSHR SLTD U	1.000 ea
HW3001B01	BRASS CUP WASHER, FOR #10 SCREW	1.000 ea
10XN2520S06	1/4 20X3/8 HX HD CAP S.S.	2.000 ea
WD1000B16	T&B CX70TN OR L70P TERMINAL LUG	2.000 ea
07EP1119A02G	307 BRG,C.I.FH,GRSR,RLF,DRAIN FITTING,IN	1.000 ea
HW4601B25	INPRO SEAL, 307 BRG, MINI66	1.000 ea
10XN2520A26	1/4-20X 1 5/8 HEX HD	4.000 ea
HW4500A32	FIT./EXT 1698-B (ALEMITE)GREASE FITTING	1.000 ea
HA4051A00	PLASTIC CAP FOR GREASE FITTING	1.000 ea
HW4500A17	317400 ALEMITE GREASE RELIEF	1.000 ea
HA4010A01	T-DRAIN PLUG,416 S.S.,W/ 1/4-28 THD & .0	1.000 ea
HW5100A08	W3118-035 WVY WSHR (WB)	1.000 ea
37EP1314A01G	PU ENDPLATE, MACH GRAY	1.000 ea
HW4601B25	INPRO SEAL, 307 BRG, MINI66	1.000 ea
HW4500A01	1641B(ALEMITE)400 UNIV, GREASE FITT	1.000 ea
HA4051A00	PLASTIC CAP FOR GREASE FITTING	1.000 ea
HW4500A17	317400 ALEMITE GREASE RELIEF	1.000 ea
HA4002A03	#304 S.S. DRAIN FITTING, .125 NPT (.44 H	1.000 ea
10XN2520A30	HEX HD CAP SCREW-STD THD-.25 X 20 THD PE	2.000 ea
XY3118A12	5/16-18 HEX NUT DIRECTIONAL SERRATION	4.000 ea
07FH1001A01G	SPL FAN HOUSING, 307, W/GREASER, GRAY EP	1.000 ea
10XN2520A28	1/4-20X 1 3/4 HEX HD	3.000 ea
WD4100A02	DP-1000 HEYCO PLUG OR 62MP1000 MICRO PL	1.000 ea
12CB1503G	CONDUIT BOX CAST. (GRAY)	1.000 ea

09GS1013A01	09 GS FOR 09CB3501 LID - BLACK NEOPRENE	1.000 ea
10XN2520A12	1/4-20 X 3/4 HEX HEAD CAP	2.000 ea
MJ5001A02	732 CL SEALANT 3 OZ DIXIE BEARING 289100	0.010 ea
HW1001A25	LOCKWASHER 1/4, ZINC PLT .493 OD, .255 I	2.000 ea
HW2501F21	KEY, 5/16 SQ X 2.375	1.000 ea
HA7000A02	KEY RETAINER RING, 1 1/8 DIA, 1 3/8 DIA	1.000 ea
MJ5001A27	32220KN GRAY SEALER *MIN BUY 4 QTS=1GAL	0.001 qt
MJ1000A73	INPRO P-80 ASSEMBLY LUB./ 1 QT. CONTAIN	0.001 qt
85XU0407S04	4X1/4 U DRIVE PIN STAINLESS	4.000 ea
LB1115N	LABEL,LIFTING DEVICE (ON ROLLS)	1.000 ea
LT0019A00	MOTOR NO-LOAD PERFORMANCE DATA SHEET	1.000 ea
WD1000D21	TRM,T&B #B71M,RING,18-14,.25,NON-INSL	3.000 ea
MJ1000A02	GREASE, POLYREX EM EXXON	0.050 lb
HA3104A32	THRUBOLT- 5/16-18 X12.750	4.000 ea
51XB1214A16	12-14X1.00 HXWSSLD SERTYB	1.000 ea
MG1025N19	WILKOFAS, 778.50, RELIANCE BLUE-GREEN 8	0.036 ga
LB1119N	WARNING LABEL	1.000 ea
LC0006	CONNECTION LABEL	1.000 ea
LB1002N	LABEL,MARINE DUTY (ON ROLLS)	1.000 ea
LB1449	DIV-2/NEC WARNING LABEL	1.000 ea
NP3235E	SS IEEE841 DIV-2 UL CSA-C US EEV PREM	1.000 ea
NP3186E	SS IEEE841 INV AUX DATA INFORMATION	1.000 ea
07PA1011	PKG GRP, 07 CAST IRON PK1181	1.000 ea
10XL3808A28	3/8 X 1 3/4" LAG SCREW	2.000 ea
MN416A01	TAG-INSTAL-MAINT no wire (2200bx) 4/22	1.000 ea

AC Induction Motor Performance Data

Record # 47355

Typical performance - not guaranteed values

Winding: 07WGY930-R013		Type: 0742M		Enclosure: TEFC	
Nameplate Data			460 V, 60 Hz: Single Voltage Motor		
Rated Output (HP)	10	Full Load Torque	14.8 LB-FT		
Volts	460	Start Configuration	direct on line		
Full Load Amps	11.3	Breakdown Torque	67.3 LB-FT		
R.P.M.	3500	Pull-up Torque	22.4 LB-FT		
Hz	60	Phase	3	Locked-rotor Torque	29 LB-FT
NEMA Design Code	B	KVA Code	H	Starting Current	81 A
Service Factor (S.F.)	1.15	No-load Current	3.11 A		
NEMA Nom. Eff.	91	Power Factor	91	Line-line Res. @ 25°C	0.791 Ω
Rating - Duty	40C AMB-CONT		Temp. Rise @ Rated Load	50°C	
S.F. Amps			Temp. Rise @ S.F. Load	62°C	
			Locked-rotor Power Factor	30.3	
			Rotor inertia	0.383 LB-FT ²	

Load Characteristics 460 V, 60 Hz, 10 HP

% of Rated Load	25	50	75	100	125	150	S.F.
Power Factor	64	81	88	89	91	90	91
Efficiency	89.1	92.2	92.3	91.6	90.3	89.1	90.9
Speed	3576	3554	3530	3504	3474	3442	3486
Line amperes	4.08	6.21	8.61	11.3	14.1	17.4	13

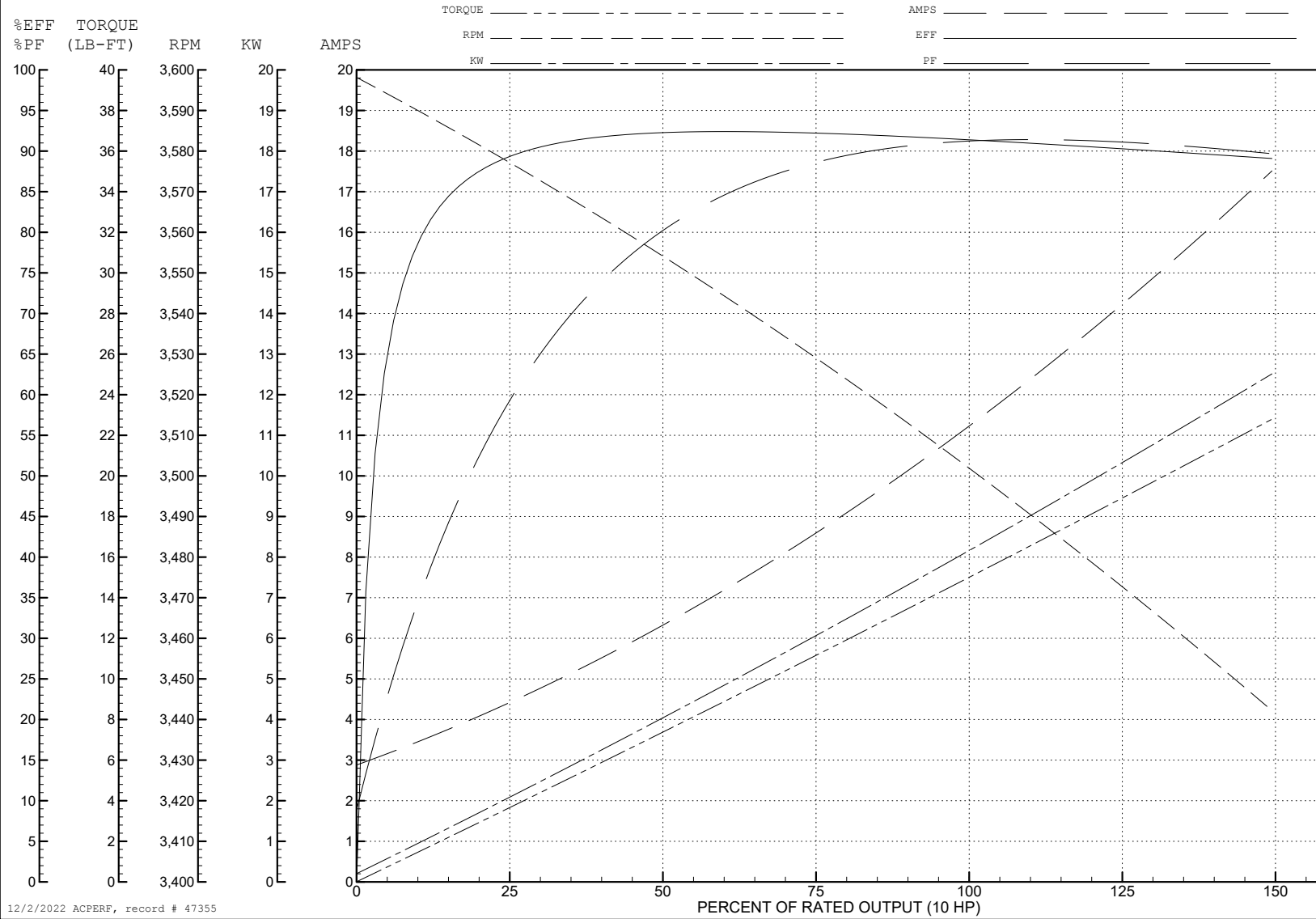
ABB Motors and Mechanical Inc.

WINDING # 07WGY930

Typical performance - not guaranteed values.

10 HP 3 PH 60 HZ 3500 RPM 460 V 0742M

TORQUES (LB-FT): PO=67.3 PU=22.4 LR=29 LRA=81



12/2/2022 ACPERF, record # 47355

AC Induction Motor Performance Data

Record # 65135

Typical performance - not guaranteed values

Winding: 07WGY930-R013		Type: 0742M		Enclosure: TEFC	
Nameplate Data			368 V, 60 Hz: Single Voltage Motor		
Rated Output (HP)	10	Full Load Torque	15.02 LB-FT		
Volts	460	Start Configuration	direct on line		
Full Load Amps	11.3	Breakdown Torque	42.64 LB-FT		
R.P.M.	3500	Pull-up Torque	14.18 LB-FT		
Hz	60	Phase	3	Locked-rotor Torque	18.36 LB-FT
NEMA Design Code	B	KVA Code	H	Starting Current	64.41 A
Service Factor (S.F.)	1.15	No-load Current	2.43 A		
NEMA Nom. Eff.	91	Power Factor	91	Line-line Res. @ 25°C	0.791 Ω
Rating - Duty	40C AMB-CONT		Temp. Rise @ Rated Load	66°C	
S.F. Amps			Temp. Rise @ S.F. Load	87°C	
			Locked-rotor Power Factor	30.1	
			Rotor inertia	0.383 LB-FT ²	

Load Characteristics 368 V, 60 Hz, 10 HP

% of Rated Load	25	50	75	100	125	150	S.F.
Power Factor	79	89	91	90	90	86	90
Efficiency	90.5	92.3	91.4	89.7	87.4	84.6	88.3
Speed	3565	3532	3495	3453	3401	3335	3422
Line amperes	4.09	7.1	10.43	14.25	18.44	23.94	16.8

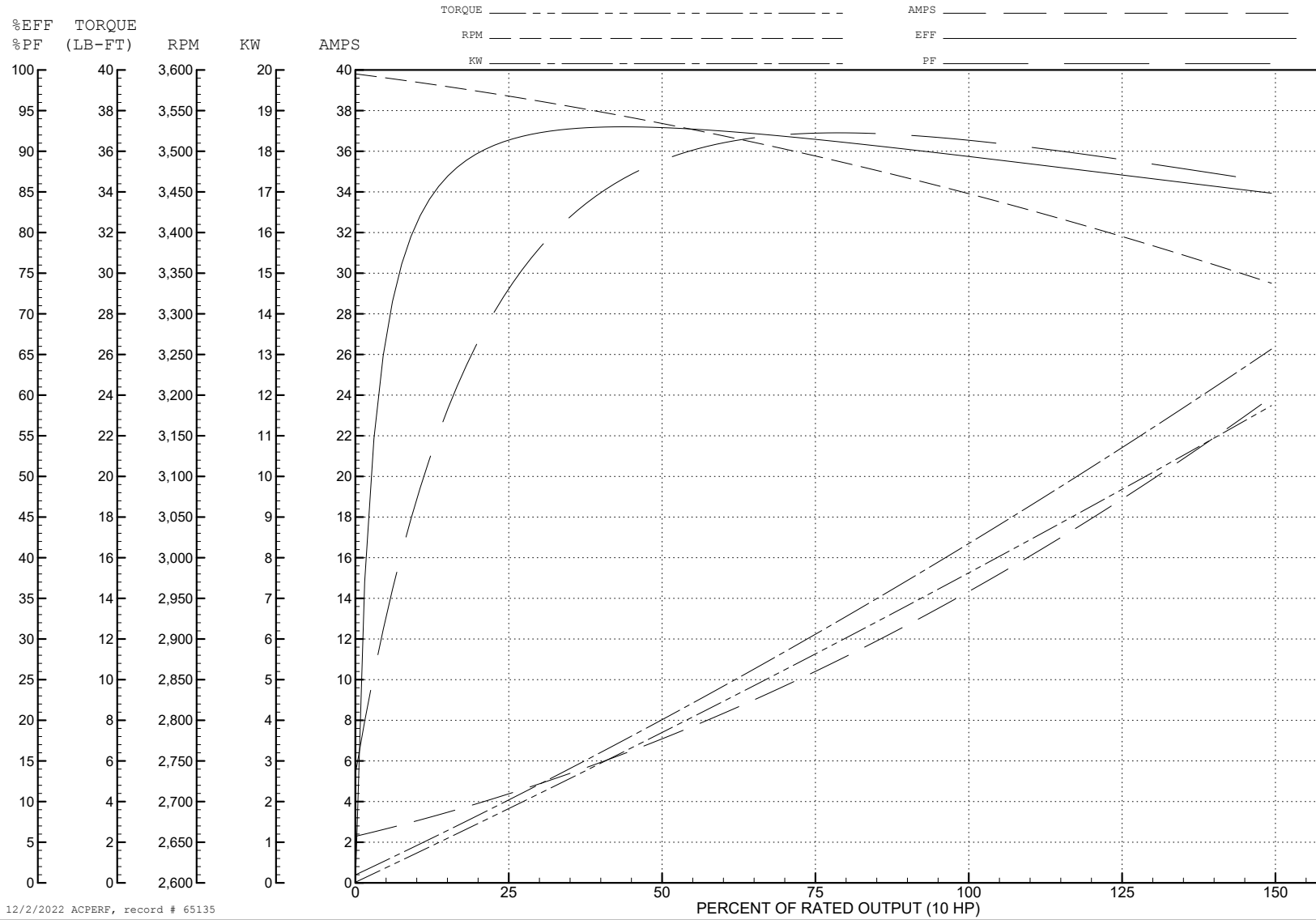
ABB Motors and Mechanical Inc.

WINDING # 07WGY930

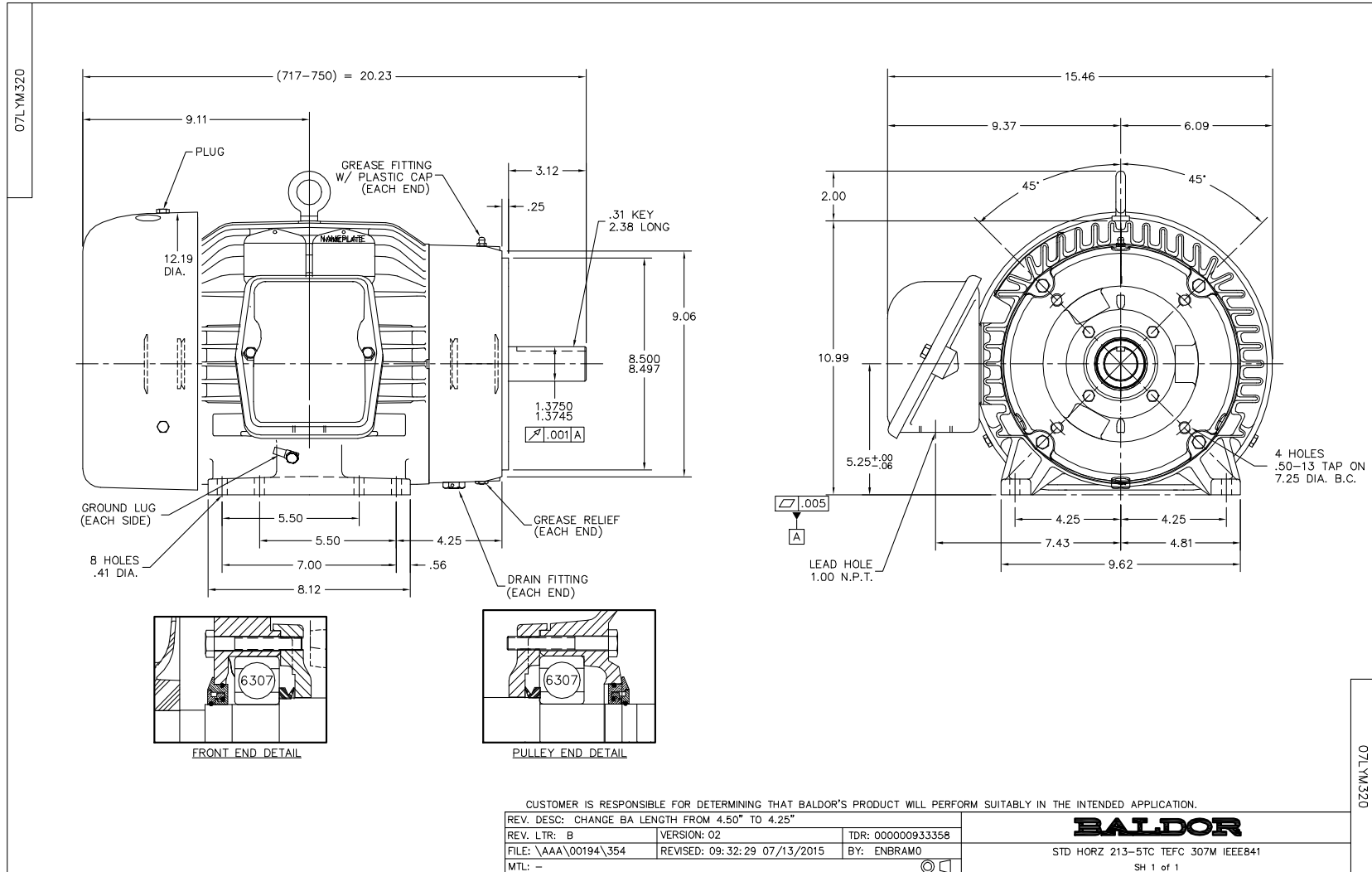
Typical performance - not guaranteed values.

10 HP 3 PH 60 HZ 3500 RPM 368 V 0742M

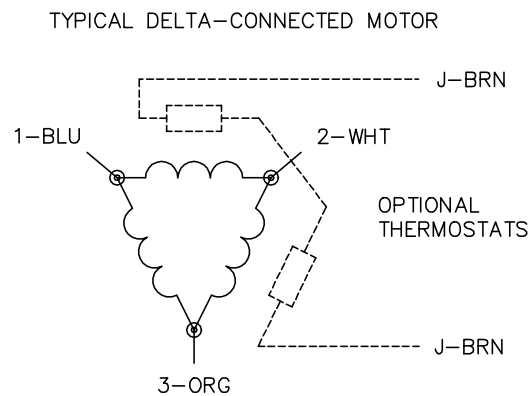
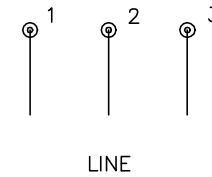
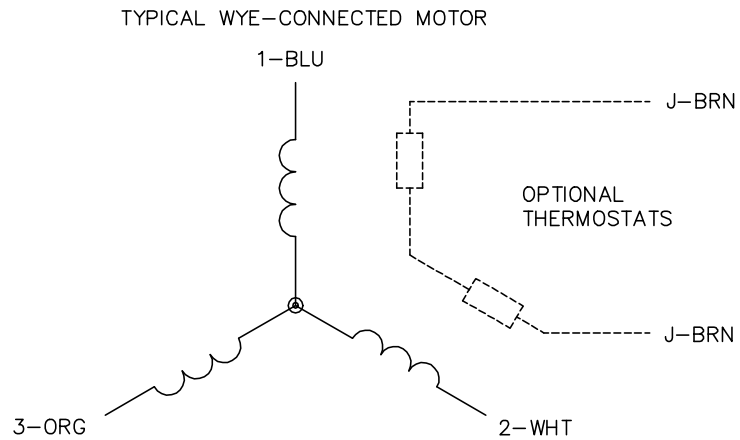
TORQUES (LB-FT): PO=42.64 PU=14.18 LR=18.36 LRA=64.41



12/2/2022 ACPERF, record # 65135



CD0006



NOTES:

1. THREE LEAD MOTOR MAY BE EITHER WYE CONNECTED OR DELTA CONNECTED.
2. INTERCHANGE ANY TWO LINE LEADS TO REVERSE ROTATION.
3. OPTIONAL THERMOSTATS ARE PROVIDED WHEN SPECIFIED.
4. ACTUAL NUMBER OF INTERNAL PARALLEL CIRCUITS MAY VARY.
5. LEAD COLORS ARE OPTIONAL. LEADS MUST BE NUMBERED AS SHOWN.

CD0006

REV. DESC: ADD CLASS CONN00000007		
REV. LTR: E	VERSION: 01	TDR: 000001099922
FILE: \AAA\00005\141	REVISED: 10:24:49 02/19/2019	BY: ENBRIRO
MTL: -		© □

BALDOR - RELIANCE®

3PH, SV, 3 LEADS, WYE OR DELTA CONNECTED

SH 1 of 1