



Customer information packet

CECP83661T-5

3HP, 1755RPM, 3PH, 60HZ, 182TC, 0632M, TEFC, F1

Class - CLI GP A,B,C,D

Division - Division II

Specifications

Enclosure	TEFC
Frame	182TC
Frame Material	Iron
Frequency	60.00 Hz
Motor Letter Type	Three Phase
Output @ Frequency	3.000 HP @ 60 HZ
Phase	3
Synchronous Speed @ Frequency	1800 RPM @ 60 HZ
Voltage @ Frequency	575.0 V @ 60 HZ
XP Class and Group	CLI GP A,B,C,D
XP Division	Division II
Agency Approvals	CSA CSA EEV UR
Ambient Temperature	40 °C
Auxillary Box	No Auxillary Box
Auxillary Box Lead Termination	None
Base Indicator	Rigid
Bearing Grease Type	Polyrex EM (-20F +300F)
Blower	None
Constant Torque Speed Range	1.5
Current @ Voltage	3.300 A @ 575.0 V
Design Code	B
Drip Cover	No Drip Cover
Duty Rating	CONT
Efficiency @ 100% Load	89.5 %
Electrically Isolated Bearing	Not Electrically Isolated
Feedback Device	NO FEEDBACK
Front Face Code	Standard
Front Shaft Indicator	None
Heater Indicator	No Heater
High Voltage Full Load Amps	3.3 a

Part detail

Revision	AG
Type	AC
Mech. spec.	06H770
Base	
Status	PRD/A
Elec. spec.	06WGX319
Layout	06LYH770
Eff. date	09-12-2022
CD Diagram	CD0006
Poles	04
Leads	3#16
Proprietary	False
Created date	10-03-2011

Insulation Class	F
Inverter Code	Inverter Duty
KVA Code	J
Lifting Lugs	Standard Lifting Lugs
Locked Bearing Indicator	Locked Bearing
Max Speed	2700 rpm
Motor Lead Exit	Ko Box
Motor Lead Quantity/Wire Size	3 @ 16 AWG
Motor Lead Termination	Flying Leads
Motor Standards	NEMA
Motor Type	0632M
Mounting Arrangement	F1
Number of Poles	4
Overall Length	16.69 IN
Power Factor	77
Product Family	Chem Process S/P 32-8 IEEE 841
Pulley End Bearing Type	Ball
Pulley Face Code	C-Face
Pulley Shaft Indicator	Standard
Rodent Screen	None
Service Factor	1.15
Shaft Diameter	1.125 IN
Shaft Extension Location	Pulley End
Shaft Ground Indicator	No Shaft Grounding
Shaft Rotation	Reversible
Shaft Slinger Indicator	Shaft Slinger
Speed	1755 rpm
Speed Code	Single Speed
Starting Method	Direct on line
Thermal Device - Bearing	None
Thermal Device - Winding	None
Vibration Sensor Indicator	No Vibration Sensor
Winding Thermal 1	None
Winding Thermal 2	None

XP Temp Code

T3C

Nameplate

NP4328E									
CAT.NO.	CECP83661T-5								
SPEC.	06H770X319G1								
HP	3 TE					IP	56		
VOLTS	575								
AMPS	3.3								
R.P.M.	1755								
FRAME	182TC		HZ	60		PH	3		
SER.F.	1.15	CODE	J	DES.	B	CLASS	F		
RATING	40C AMB-CONT								
SN									
DE	6206		ODE	6206					
NEMA NOM. EFF.	89.5		P.F.	77					
GUAR. MIN. EFF.	87.5	CC	010A						
T. CODE	T3C	TEMP=	160						

NP3186E

SPEC.	06H770X319G1		
ABMA DE BRG	30BC02XP30X		
ABMA ODE BRG	30BC02X30X		
GREASE	POLYREX EM		
MOTOR WEIGHT	122	ROTOR BARS	28 STATOR BARS 36
MAX. R.P.M.	2700	MAX. KVAR	.86
INV.TYPE	PWM		
T=	160		
CHP	60	TO	90
CT	1.5	TO	60
VT	0-	TO	60
HTR-VOLTS	N/A	HTR-AMPS	N/A
HTR-WATTS	MAX. SPACE HEATER TEMP.		N/A

AC Induction Motor Performance Data

Record # 92324

Typical performance - not guaranteed values

Winding: 06WGX319-R011		Type: 0632M	Enclosure: TEFC
Nameplate Data		575 V, 60 Hz: Single Voltage Motor	
Rated Output (HP)	3	Full Load Torque	8.938 LB-FT
Volts	575	Start Configuration	direct on line
Full Load Amps	3.3	Breakdown Torque	30.9 LB-FT
R.P.M.	1755	Pull-up Torque	18.2 LB-FT
Hz	60 Phase	Locked-rotor Torque	16.6 LB-FT
NEMA Design Code	B KVA Code	Starting Current	25.6 A
Service Factor (S.F.)	1.15	No-load Current	1.6945 A
NEMA Nom. Eff.	89.5 Power Factor	Line-line Res. @ 25°C	6.2 Ω
Rating - Duty	40C AMB-CONT	Temp. Rise @ Rated Load	35°C
S.F. Amps		Temp. Rise @ S.F. Load	42°C
		Locked-rotor Power Factor	41.5
		Rotor inertia	0.298 lb-ft ²

Load Characteristics 575 V, 60 Hz, 3 HP

% of Rated Load	25	50	75	100	125	150	S.F.
Power Factor	37.9928	59.5698	72.2924	79.3632	81.9921	83.3217	79
Efficiency	81.0946	87.602	89.337	89.5	89.509	89.3219	89.3
Speed	1791.099	1782.819	1774.089	1764.909	1759.149	1755.099	1749
Line amperes	1.8299	2.1538	2.6135	3.1615	3.5213	3.7776	3.66

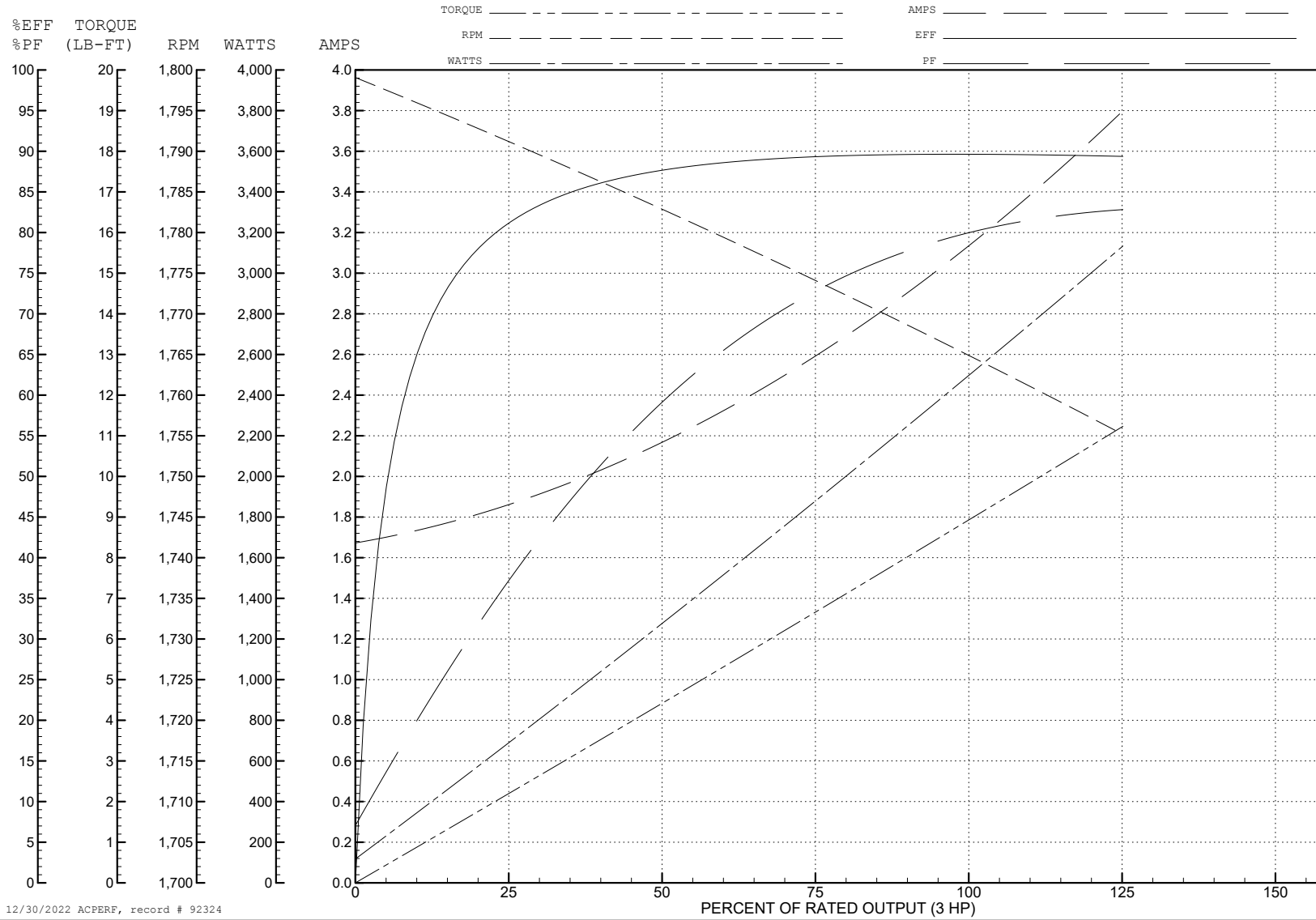
ABB Motors and Mechanical Inc.

WINDING # 06WGX319

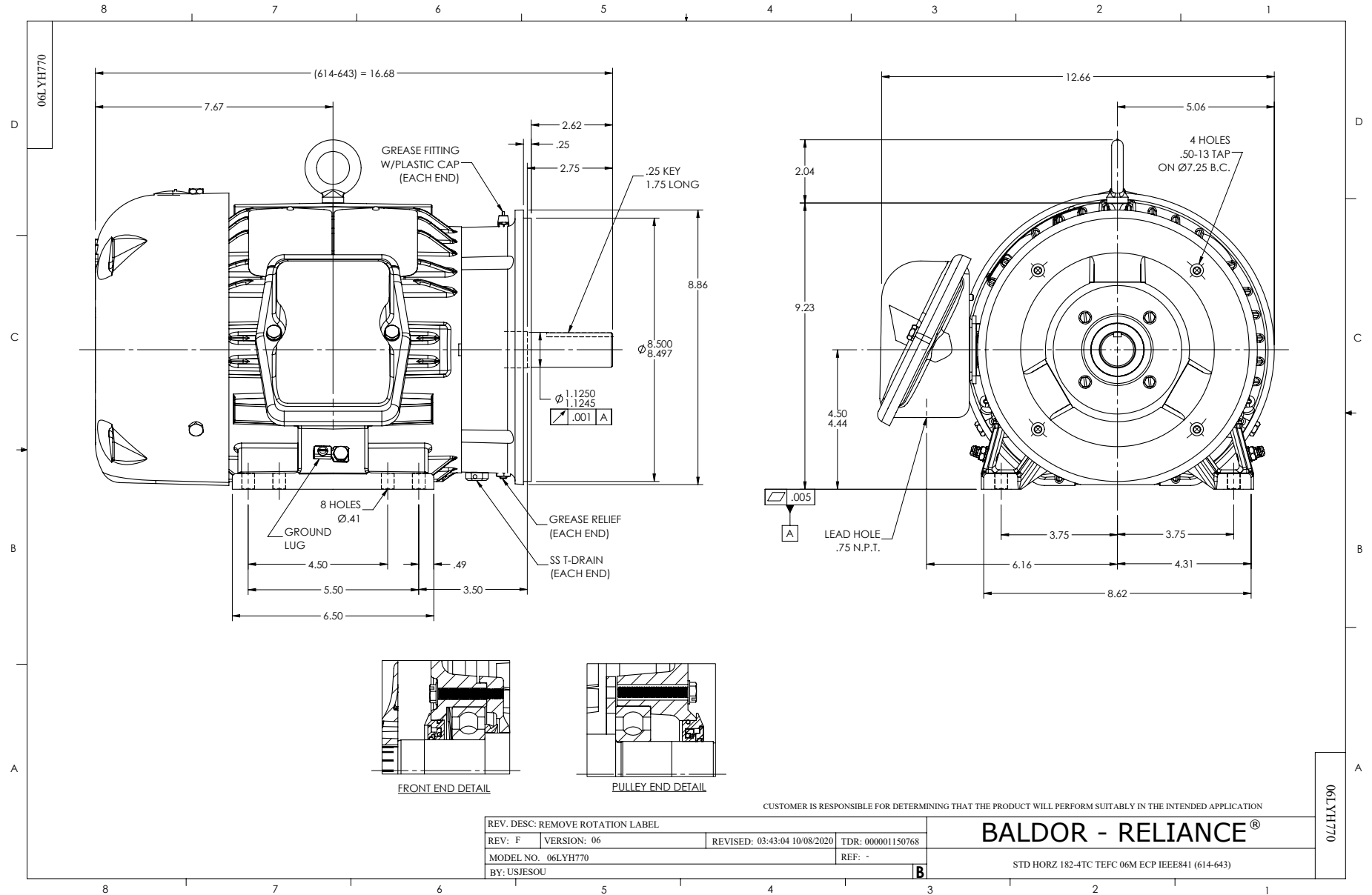
3 HP 3 PH 60 HZ 1755 RPM 575 V 0632M

Typical performance - not guaranteed values.

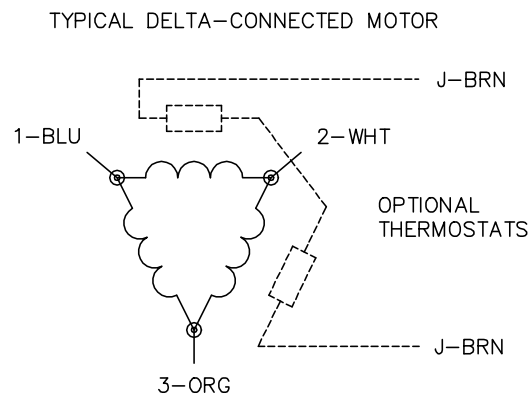
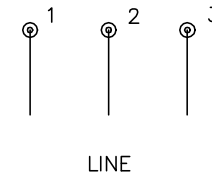
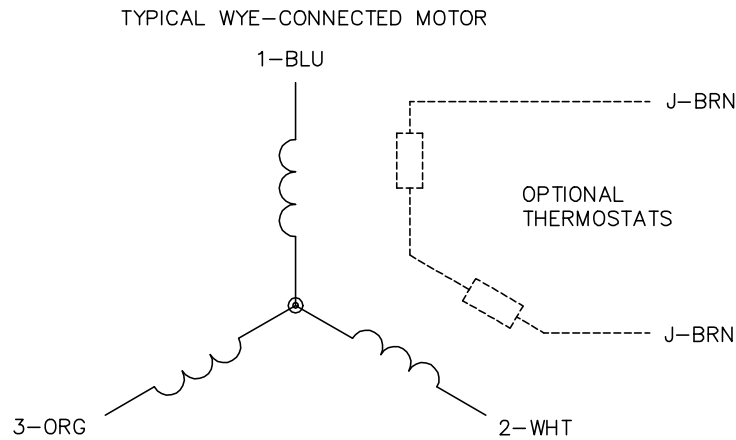
TORQUES (LB-FT): PO=30.9 PU=18.2 LR=16.6 LRA=25.6



12/30/2022 ACPERF, record # 92324



CD0006



NOTES:

1. THREE LEAD MOTOR MAY BE EITHER WYE CONNECTED OR DELTA CONNECTED.
2. INTERCHANGE ANY TWO LINE LEADS TO REVERSE ROTATION.
3. OPTIONAL THERMOSTATS ARE PROVIDED WHEN SPECIFIED.
4. ACTUAL NUMBER OF INTERNAL PARALLEL CIRCUITS MAY VARY.
5. LEAD COLORS ARE OPTIONAL. LEADS MUST BE NUMBERED AS SHOWN.

CD0006

REV. DESC: ADD CLASS CONN00000007		
REV. LTR: E	VERSION: 01	TDR: 000001099922
FILE: \AAA\00005\141	REVISED: 10:24:49 02/19/2019	BY: ENBRIRO
MTL: -		© □

BALDOR - RELIANCE®

3PH, SV, 3 LEADS, WYE OR DELTA CONNECTED

SH 1 of 1