



---

# Customer information packet

## CDP3580

1.5HP, 2500RPM, DC, 145TC, 3524P, TEFC, F1

ELECTRIC MOTOR WHOLESALE.COM

Class - None

Division -

## Specifications

Armature Voltage	180 V
Base Speed	2500 rpm
Enclosure	TEFC
Frame	145TC
Frame Material	Steel
Output Power	1.500 HP
XP Class and Group	None
Agency Approvals	CE CSA UR
Ambient Temperature	40 °C
Armature Current	7.0 a
Armature Inertia	20.228 lb-ft <sup>2</sup>
Base Indicator	Rigid
Bearing Grease Type	Polyrex EM (-20F +300F)
Drip Cover	No Drip Cover
Duty Rating	CONT
Feedback Device	NO FEEDBACK
Heater Indicator	No Heater
Lifting Lugs	No Lifting Lugs
Motor Lead Exit	Ko Box
Motor Lead Quantity/Wire Size	2 @ 14 AWG
Motor Lead Termination	Flying Leads
Motor Standards	NEMA
Mounting Arrangement	F1
Overall Length	14.50 IN
Product Family	General Purpose
Pulley End Bearing Type	Sealed Bearing
Service Factor	1.00
Shaft Diameter	0.875 IN
Shaft Extension Location	Pulley End
Shaft Ground Indicator	No Shaft Grounding

## Part detail

Revision	N
Type	DC
Mech. spec.	35P432
Base	
Status	PRD/A
Elec. spec.	35WGZ183
Layout	35LYP432
Eff. date	02-14-2022
CD Diagram	CD0194
Poles	00
Leads	
Proprietary	False
Created date	01-01-0001

**Shaft Rotation**

Reversible

**Shaft Slinger Indicator**

No Slinger

---

**Nameplate**

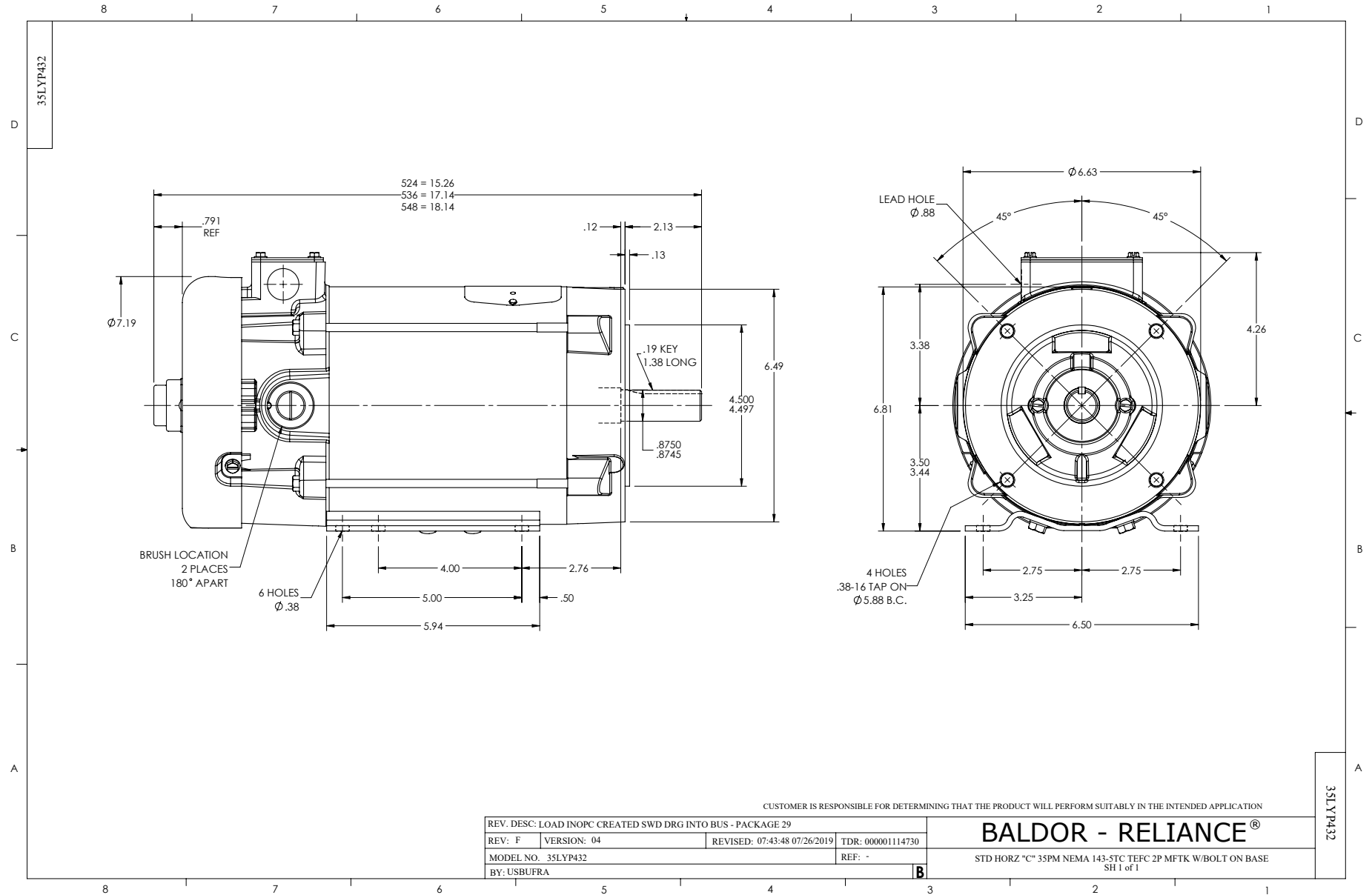
<b>NP0891L</b>				
<b>CAT.NO.</b>	CDP3580			
<b>SPEC.</b>	35P432Z183			
<b>HP</b>	1.5	<b>ENCL</b>	TEFC	
<b>RPM</b>	2500			
<b>FRAME</b>	145TC	<b>TYPE</b>	3524P	
<b>ARM V</b>	180	<b>ARM A</b>	7	
<b>FLD V</b>		<b>FLD A</b>		
<b>INSUL</b>	F	<b>AMB.</b>	40	
<b>DUTY</b>	CONT	<b>SUPPLY</b>	K	
<b>BRG/DE</b>	6205	<b>BRG/ODE</b>	6205	
<b>BRUSHES</b>	2/BP5000T15			
		<b>BLANK</b>	IP44	
<b>SER.</b>				
<b>BLANK</b>	1.1KW 1/MIN IC411 28KG			
<b>APRV-CE</b>	Y	<b>APRV-CSA</b>	Y	<b>APRV-UL</b> Y

## Parts list

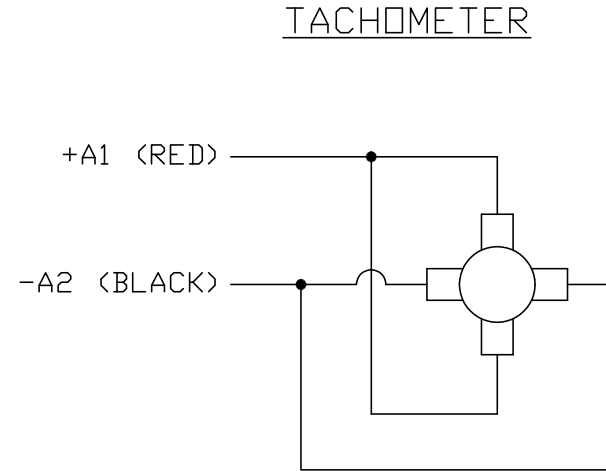
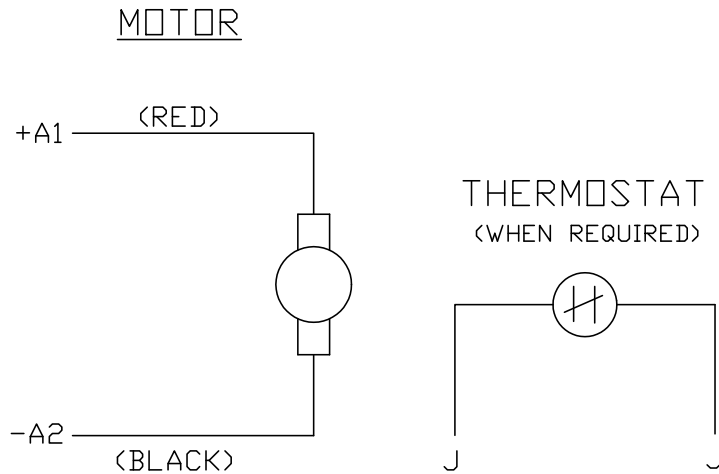
Part number	Description	Quantity
SA005508	SA 35P432Z183	1.000 ea
AA003157	AA 35P432Z183	1.000 ea
BP5000T15SP	CARBON BRUSH-35P,180VOLTS	1.000 ea
11XW1032G06	10-32 X .38, TAPTITE II, HEX WSHR SLTD U	1.000 ea
HW3001B02	BRASS CUP WASHER W/GROUND SYMBOL TAB,	1.000 ea
35EP3110A02	FR ENDPLATE, MACH	1.000 ea
HW5100A05	WVY WSHR F/205 & 304 BRGS	1.000 ea
35EP3301A01	PU ENDPLATE, MACH	1.000 ea
BP5201A14SP	BRUSH HOLDER ASSY	1.000 ea
80XN1032A03	10-32 X 3/16 SET SCREW	2.000 ea
MJ5004A05	#242-21 LOCTITE GENERAL PURPOSE MED. STR	0.001 ea
35FN3002A05SP	EXFN, PLASTIC, 6.376 OD, .638 ID	1.000 ea
51XB1214A16	12-14X1.00 HXWSSLD SERTYB	1.000 ea
35FH5001A10SP	FAN COVER ASS'Y TEFC HORZ	1.000 ea
51XW1032A06	10-32 X .38, TAPTITE II, HEX WSHR SLTD S	3.000 ea
WD4102A01	SR-6L-1 HEYCO STRN RELIEF OR 23MPO6L10 M	1.000 ea
WD4100A17	PLUG STIMPSON D4036	1.000 ea
35CB4506	CONDUIT BOX LID, STAMPED	1.000 ea
35GS1010	CONDUIT BOX LID, GASKET	1.000 ea
51XW0832A07	8-32 X .44, TAPTITE II, HEX WSHR SLTD SE	2.000 ea
HW2501D13	KEY, 3/16 SQ X 1.375	1.000 ea
HA7000A01	KEY RETAINER 7/8" DIA SHAFT	1.000 ea
51XN1032A20	10-32 X 1 1/4 HX WS SL SR	2.000 ea
MG1000G27	MED CHARCOAL METALLIC GREY 400-0096	0.017 ga
85XU0407S04	4X1/4 U DRIVE PIN STAINLESS	2.000 ea
HA3101A19	THRUBOLT 1/4-20 X 7.875	4.000 ea
MN416A01	TAG-INSTAL-MAINT no wire (2200bx) 4/22	1.000 ea
LC0194	CONNECTION LABEL	1.000 ea
LB1119N	WARNING LABEL	1.000 ea
NP0891L	NP STD LASER ENGRAVED DC MTRS, UL CSA CE	1.000 ea
35PA1007	PKG GRP, PRINT PK1034A06	1.000 ea

**Accessories**

<b>Part number</b>	<b>Description</b>	<b>Multiplier</b>
TK3500	TACHO MOUNTING KIT TK3500	A8



CD0194



NOTES:

1. CCW ROTATION AS SHOWN FACING COMMUTATOR END. TO REVERSE MOTOR ROTATION OR TACHOMETER OUTPUT POLARITY INTERCHANGE LEADS A1(RED) & A2(BLACK)
2. LEAD COLORS FOR REFERENCE ONLY & NOT SPECIFIED BY THIS DRAWING. LEAD COLORS SPECIFIED BY LAYOUT DRAWING & BILL OF MATERIAL ONLY.

MATL: -			
REV: E	ADDED NOTE "LEAD COLORS FOR REFERENCE ONLY &..."		
CD0194	SCALE: -	BY: CK	REVISED: 07/28/95
	FILE: AAA00004503	TDR: 0078737	

**BALDOR ELECTRIC Co.**

CD TYPE P DC PERMANENT MAGNET MOTORS AND TACHOMETERS

CD0194