

BALDOR® • RELIANCE 

Product Information Packet

NM3454/35

.25HP, 1785RPM, 3PH, 60HZ, 56, 3512M, TENV, F1

Part Detail							
Revision:	-	Status:	PRD/A	Change #:		Proprietary:	No
Type:	AC	Elec. Spec:	35WGG155	CD Diagram:	CD0005	Mfg Plant:	
Mech. Spec:	35A026	Layout:	35LYA026	Poles:	04	Created Date:	07-05-2022
Base:	RG	Eff. Date:	07-14-2022	Leads:	9#18		

Specs			
Catalog Number:	NM3454/35	Insulation Class:	F
Enclosure:	TENV	Inverter Code:	Inverter Ready
Frame:	56	KVA Code:	M
Frame Material:	Steel	Lifting Lugs:	No Lifting Lugs
Motor Letter Type:	Three Phase	Locked Bearing Indicator:	No Locked Bearing
Output @ Frequency:	.250 HP @ 60 HZ	Motor Lead Quantity/Wire Size:	9 @ 18 AWG
Synchronous Speed @ Frequency:	1800 RPM @ 60 HZ	Motor Lead Exit:	Ko Box
Voltage @ Frequency:	460.0 V @ 60 HZ	Motor Lead Termination:	Flying Leads
	230.0 V @ 60 HZ	Motor Type:	3512M
XP Class and Group:	None	Mounting Arrangement:	F1
XP Division:	Not Applicable	Power Factor:	70
Agency Approvals:	CSA	Product Family:	General Purpose
	UR	Pulley End Bearing Type:	Ball
Auxillary Box:	No Auxillary Box	Pulley Face Code:	Standard
Auxillary Box Lead Termination:	None	Pulley Shaft Indicator:	Standard
Base Indicator:	Rigid	Rodent Screen:	None
Bearing Grease Type:	Polyrex EM (-20F +300F)	RoHS Status:	ROHS COMPLIANT
Blower:	None	Shaft Extension Location:	Pulley End

Current @ Voltage:	.800 A @ 208.0 V	Shaft Ground Indicator:	No Shaft Grounding
	.800 A @ 230.0 V	Shaft Rotation:	Reversible
	.400 A @ 460.0 V	Shaft Slinger Indicator:	No Slinger
Design Code:	B	Speed Code:	Single Speed
Drip Cover:	No Drip Cover	Motor Standards:	NEMA
Duty Rating:	CONT	Starting Method:	Direct on line
Electrically Isolated Bearing:	Not Electrically Isolated	Thermal Device - Bearing:	None
Feedback Device:	NO FEEDBACK	Thermal Device - Winding:	None
Front Face Code:	Standard	Vibration Sensor Indicator:	No Vibration Sensor
Front Shaft Indicator:	None	Winding Thermal 1:	None
Heater Indicator:	No Heater	Winding Thermal 2:	None

Nameplate NP1256L										
CAT.NO.	NM3454/35									
SPEC.	35A026G155G2									
HP	.25									
VOLTS	230/460									
AMP	1.6/.8									
RPM	1785									
FRAME	56				HZ	60			PH	3
SER.F.	1.15			CODE	U	DES	B		CLASS	F
NEMA-NOM-EFF	70			PF	42					
RATING	40C AMB-CONT									
CC	USABLE AT 208V									
DE	6205				ODE	6203				
ENCL	TENV			SN						
	SFA 1.61/.81									

AC Induction Motor Performance Data

Record # 91140

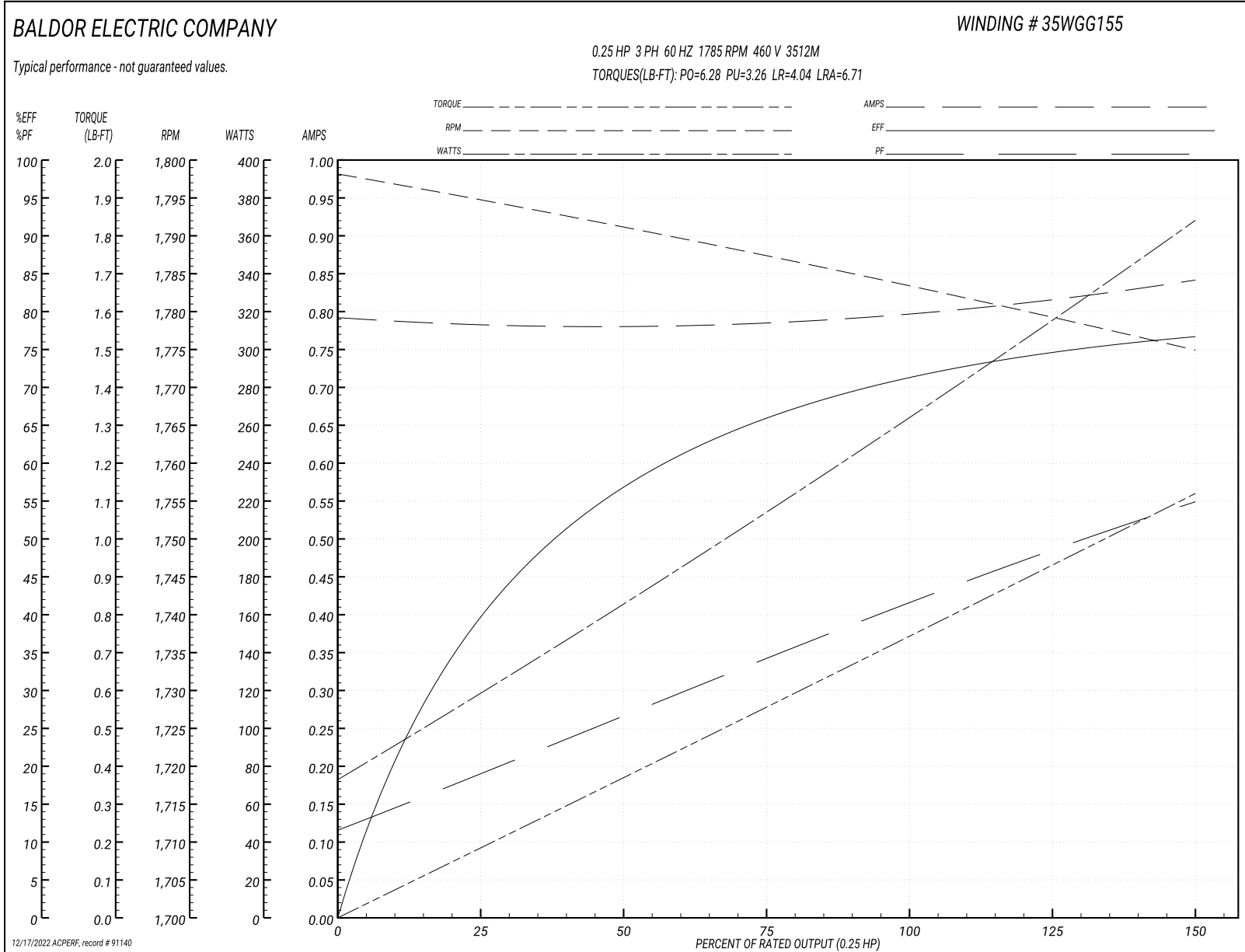
Typical performance - not guaranteed values

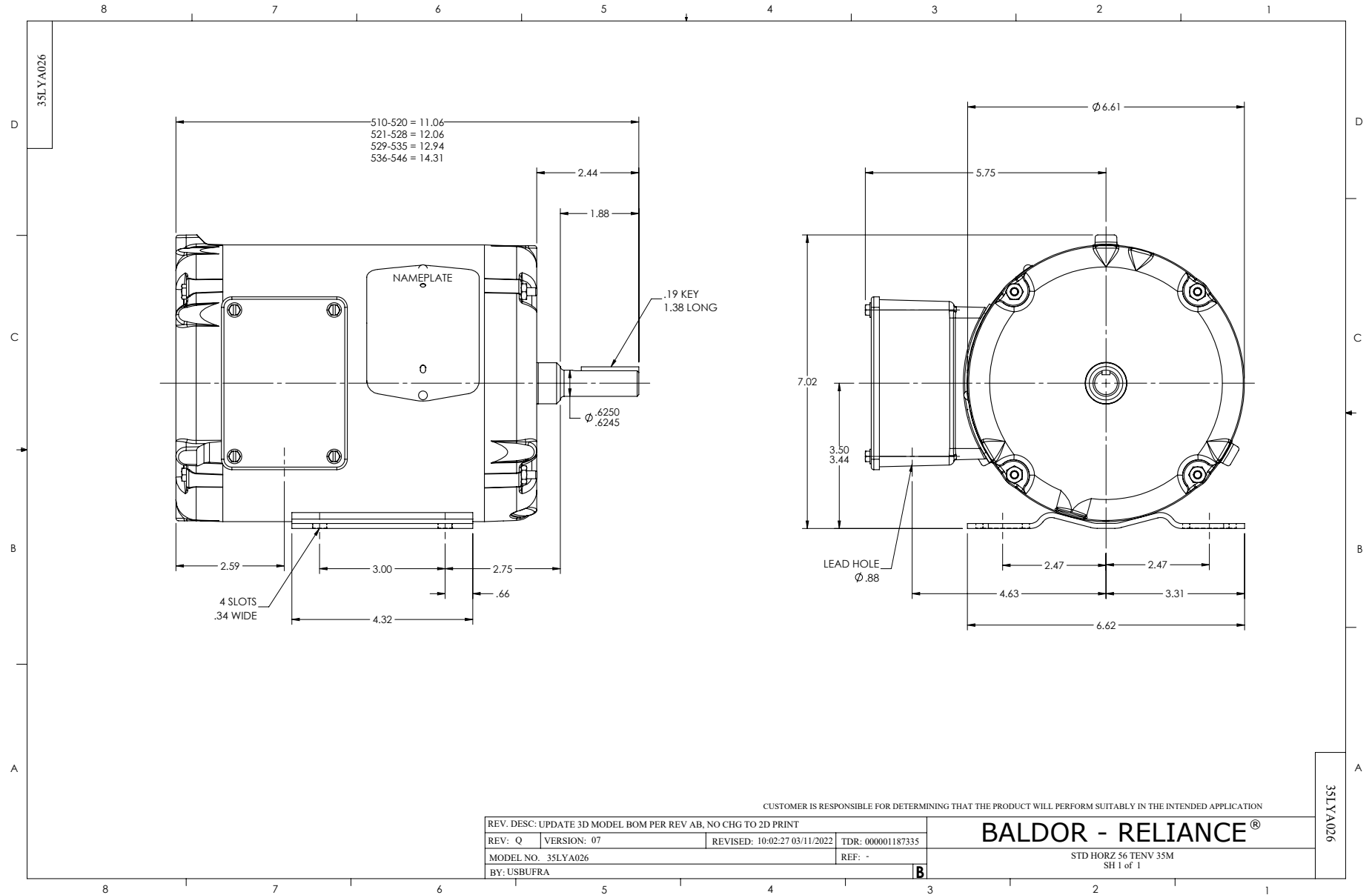
Winding: 35WGG155-R061			Type: 3512M			Enclosure: TENV		
Nameplate Data				460 V, 60 Hz: High Voltage Connection				
Rated Output (HP)			.25	Full Load Torque	0.739 LB-FT			
Volts			230/460	Start Configuration	direct on line			
Full Load Amps			1.6/.8	Breakdown Torque	6.28 LB-FT			
R.P.M.			1785	Pull-up Torque	3.26 LB-FT			
Hz	60 Phase		3	Locked-rotor Torque	4.04 LB-FT			
NEMA Design Code	B	KVA Code	U	Starting Current	6.71 A			
Service Factor (S.F.)			1.15	No-load Current	0.792 A			
NEMA Nom. Eff.	70	Power Factor	42	Line-line Res. @ 25°C	43.2 Ω			
Rating - Duty			40C AMB-CONT	Temp. Rise @ Rated Load	46°C			
S.F. Amps				Temp. Rise @ S.F. Load	48°C			
				Locked-rotor Power Factor	70.7767			
				Rotor inertia	0.0866 lb-ft ²			

Load Characteristics 460 V, 60 Hz, 0.25 HP

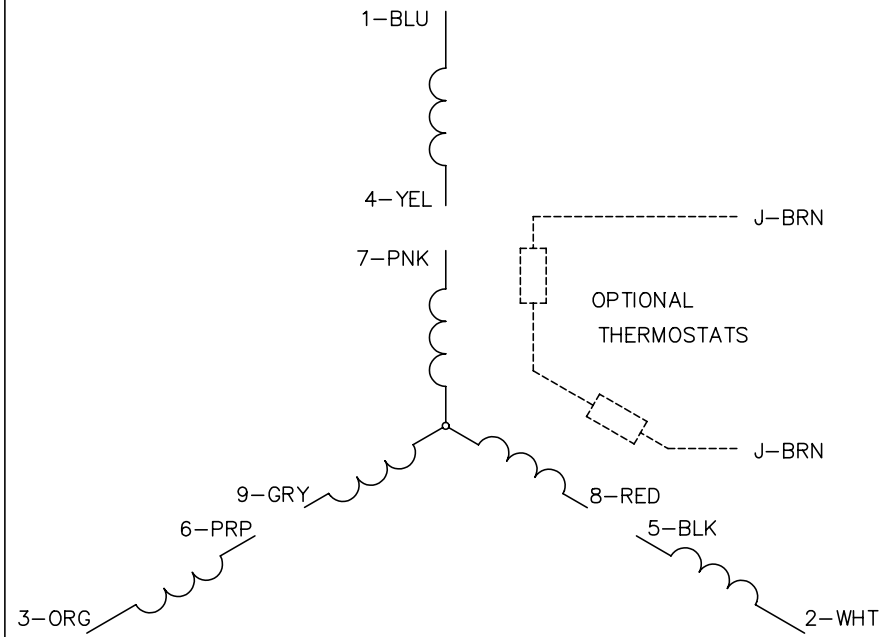
% of Rated Load	25	50	75	100	125	150	S.F.
Power Factor	19	27	34	41	49	55	46
Efficiency	40.8	57	65.8	71.2	74.5	76.7	73.2
Speed	1795	1791	1787	1784	1779	1775	1781
Line amperes	0.782	0.78	0.787	0.796	0.813	0.843	0.806

Performance Graph at 460V, 60Hz, 0.25HP Typical performance - Not guaranteed values

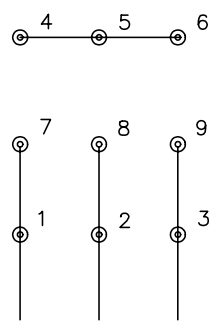




CD0005

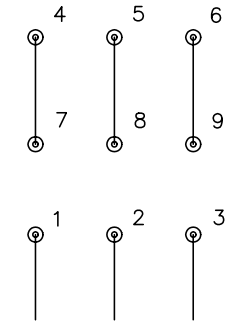


LOW VOLTAGE
(2Y)



LINE

HIGH VOLTAGE
(1Y)



LINE

NOTES:

1. INTERCHANGE ANY TWO LINE LEADS TO REVERSE ROTATION.
2. OPTIONAL THERMOSTATS ARE PROVIDED WHEN SPECIFIED.
3. ACTUAL NUMBER OF INTERNAL PARALLEL CIRCUITS MAY BE A MULTIPLE OF THOSE SHOWN ABOVE.
4. LEAD COLORS ARE OPTIONAL. LEADS MUST ALWAYS BE NUMBERED AS SHOWN.

REV. DESC: REVISE TO SHOW OPTIONAL COLORS			
REV. LTR: E	BY: JLP	REVISED: 01/19/99 10:15	TDR: 0171435
9000D		FILE: AAA00005140	MDL: -
		MTL: -	

BALDOR ELECTRIC Co.

3PH, DV, 9 LEADS

CD0005