



Customer information packet

VEM3611T

3HP, 1760RPM, 3PH, 60HZ, 182TC, 3632M, TEFC, F1

ELECTRIC MOTOR WHOLESAL.COM

Class - None

Division - Not Applicable

Specifications

Enclosure	TEFC
Frame	182TC
Frame Material	Steel
Frequency	60.00 Hz
Output @ Frequency	3.000 HP @ 60 HZ
Phase	3
Synchronous Speed @ Frequency	1800 RPM @ 60 HZ
Voltage @ Frequency	460.0 V @ 60 HZ 230.0 V @ 60 HZ
XP Class and Group	None
XP Division	Not Applicable
Agency Approvals	CSA CSA EEV UR
Ambient Temperature	40 °C
Auxillary Box	No Auxillary Box
Auxillary Box Lead Termination	None
Base Indicator	No Mounting
Bearing Grease Type	Polyrex EM (-20F +300F)
Blower	None
Current @ Voltage	4.200 A @ 460.0 V 8.400 A @ 230.0 V 9.000 A @ 208.0 V
Design Code	B
Drip Cover	No Drip Cover
Duty Rating	CONT
Efficiency @ 100% Load	89.5 %
Electrically Isolated Bearing	Not Electrically Isolated
Feedback Device	NO FEEDBACK
Front Face Code	Standard
Front Shaft Indicator	None
Heater Indicator	No Heater

Part detail

Revision	R
Type	AC
Mech. spec.	36A003
Base	
Status	PRD/A
Elec. spec.	36WGS266
Layout	36LYA003
Eff. date	12-23-2020
CD Diagram	CD0005
Poles	04
Leads	9#16
Proprietary	False
Created date	06-29-2011

High Voltage Full Load Amps	4.2 a
Insulation Class	F
Inverter Code	Inverter Ready
KVA Code	K
Lifting Lugs	No Lifting Lugs
Locked Bearing Indicator	Locked Bearing
Motor Lead Exit	Ko Box
Motor Lead Quantity/Wire Size	9 @ 16 AWG
Motor Lead Termination	Flying Leads
Motor Standards	NEMA
Motor Type	3632M
Mounting Arrangement	F1
Number of Poles	4
Overall Length	16.55 IN
Power Factor	75
Product Family	General Purpose
Pulley End Bearing Type	Ball
Pulley Face Code	C-Face
Pulley Shaft Indicator	Standard
Rodent Screen	None
Service Factor	1.15
Shaft Diameter	1.125 IN
Shaft Extension Location	Pulley End
Shaft Ground Indicator	No Shaft Grounding
Shaft Rotation	Reversible
Shaft Slinger Indicator	No Slinger
Speed	1760 rpm
Speed Code	Single Speed
Starting Method	Direct on line
Thermal Device - Bearing	None
Thermal Device - Winding	None
Vibration Sensor Indicator	No Vibration Sensor
Winding Thermal 1	None
Winding Thermal 2	None

Nameplate

NP3441LUA

CAT.NO.	VEM3611T						
SPEC	36A003S266G2						
HP	3						
VOLTS	230/460						
AMPS	8.4/4.2						
RPM	1760						
FRAME	182TC	HZ	60	PH	3		
SF	1.15	CODE	K	DES	B	CLASS	F
NEMA NOM. EFF	89.5	PF	75				
RATING	40C AMB-CONT						
CC	010A	USABLE AT 208V				9	
ENCL	TEFC	SER					
DE	6206	ODE	6205				
VPWM INVERTER READY							
CT6-60H(10:1)VT3-60H(20:1	50Hz 3HP 190/380V 9.6/4.8A						SF1.0

Parts list

Part number	Description	Quantity
SA226398	SA 36A003S266G2	1.000 ea
RA213496	RA 36A003S266G2	1.000 ea
36FN3000C01SP	EXFN, PLASTIC, 5.25 OD, .912 ID	1.000 ea
36CB3004	36 CB CASTING W/1.09 DIA LEAD HOLE @ 6:0	1.000 ea
36GS1000SP	GASKET-CONDUIT BOX, .06 THICK #SV-330 LE	1.000 ea
51XB1016A08	10-16X 1/2HXWSSLD SERTYB	2.000 ea
11XW1032G06	10-32 X .38, TAPTITE II, HEX WSHR SLTD U	1.000 ea
HW3001B01	BRASS CUP WASHER, FOR #10 SCREW	1.000 ea
36EP3104A01	FREP MACH ASSEMBLY FOR ROUTING	1.000 ea
HW4500A01	1641B(ALEMITE)400 UNIV, GREASE FITT	1.000 ea
HW5100A05	WVY WSHR F/205 & 304 BRGS	1.000 ea
36PE3301A23	PUEP ASSEMBLY FOR ROUTING PURPOSES	1.000 ea
HW4500A01	1641B(ALEMITE)400 UNIV, GREASE FITT	1.000 ea
10XN2520A28	1/4-20X 1 3/4 HEX HD	4.000 ea
HW1001A25	LOCKWASHER 1/4, ZINC PLT .493 OD, .255 I	4.000 ea
51XB1214A16	12-14X1.00 HXWSSLD SERTYB	1.000 ea
36FH4009A102	IEC FH GREASER PRIMED	1.000 ea
51XW1032A06	10-32 X .38, TAPTITE II, HEX WSHR SLTD S	3.000 ea
36CB4516	750LIPPED CB LID - GALVANNEAL	1.000 ea
37GS1001SP	GASKET, CONDUIT BOX LID, .06 THICK LEXID	1.000 ea
51XW0832A07	8-32 X .44, TAPTITE II, HEX WSHR SLTD SE	4.000 ea
HW2501E16	KEY, 1/4 SQ X 1.750	1.000 ea
HA7000A02	KEY RETAINER RING, 1 1/8 DIA, 1 3/8 DIA	1.000 ea
85XU0407S04	4X1/4 U DRIVE PIN STAINLESS	2.000 ea
MJ1000A02	GREASE, MOBIL POLYREX EM - 124047	0.050 lb
HA3101A25	THRUBOLT 1/4-20 X 11.000 OHIO ROD	4.000 ea
MG1000Y03	MUNSELL 2.53Y 6.70/ 4.60, GLOSS 20,	0.022 ga
LC0005E01	CONN.DIA./WARNING LABEL (LC0005/LB1119N)	1.000 ea
NP3441LUA	ALUM SUPER-E VPWM INV READY UL CSA-EEV C	1.000 ea
36PA1001	PKG GRP, PRINT PK1017A06	1.000 ea
PK3082	STYROFOAM CRADLE	1.000 ea

MN416A01

TAG-INSTAL-MAINT no wire (1200/bx) 3/19

1.000 ea

AC Induction Motor Performance Data

Record # 53364

Typical performance - not guaranteed values

Winding: 36WGS266-R006		Type: 3632M		Enclosure: TEFC	
Nameplate Data			460 V, 60 Hz: High Voltage Connection		
Rated Output (HP)		3	Full Load Torque		8.8 LB-FT
Volts		230/460	Start Configuration		direct on line
Full Load Amps		8.4/4.2	Breakdown Torque		37.6 LB-FT
R.P.M.		1760	Pull-up Torque		15.2 LB-FT
Hz	60 Phase	3	Locked-rotor Torque		21.7 LB-FT
NEMA Design Code	B KVA Code	K	Starting Current		32.7 A
Service Factor (S.F.)		1.15	No-load Current		2.3 A
NEMA Nom. Eff.	89.5 Power Factor	75	Line-line Res. @ 25°C		3.81 Ω
Rating - Duty		40C AMB-CONT	Temp. Rise @ Rated Load		44°C
S.F. Amps			Temp. Rise @ S.F. Load		52°C
			Locked-rotor Power Factor		42.2
			Rotor inertia		0.298 LB-FT ²

Load Characteristics 460 V, 60 Hz, 3 HP

% of Rated Load	25	50	75	100	125	150	S.F.
Power Factor	35	55	68	75	80	82	77
Efficiency	81.1	87.8	89.6	89.8	89.7	88.2	89.2
Speed	1791	1783	1773	1764	1753	1741	1754
Line amperes	2.47	2.85	3.43	4.09	4.89	5.78	4.63

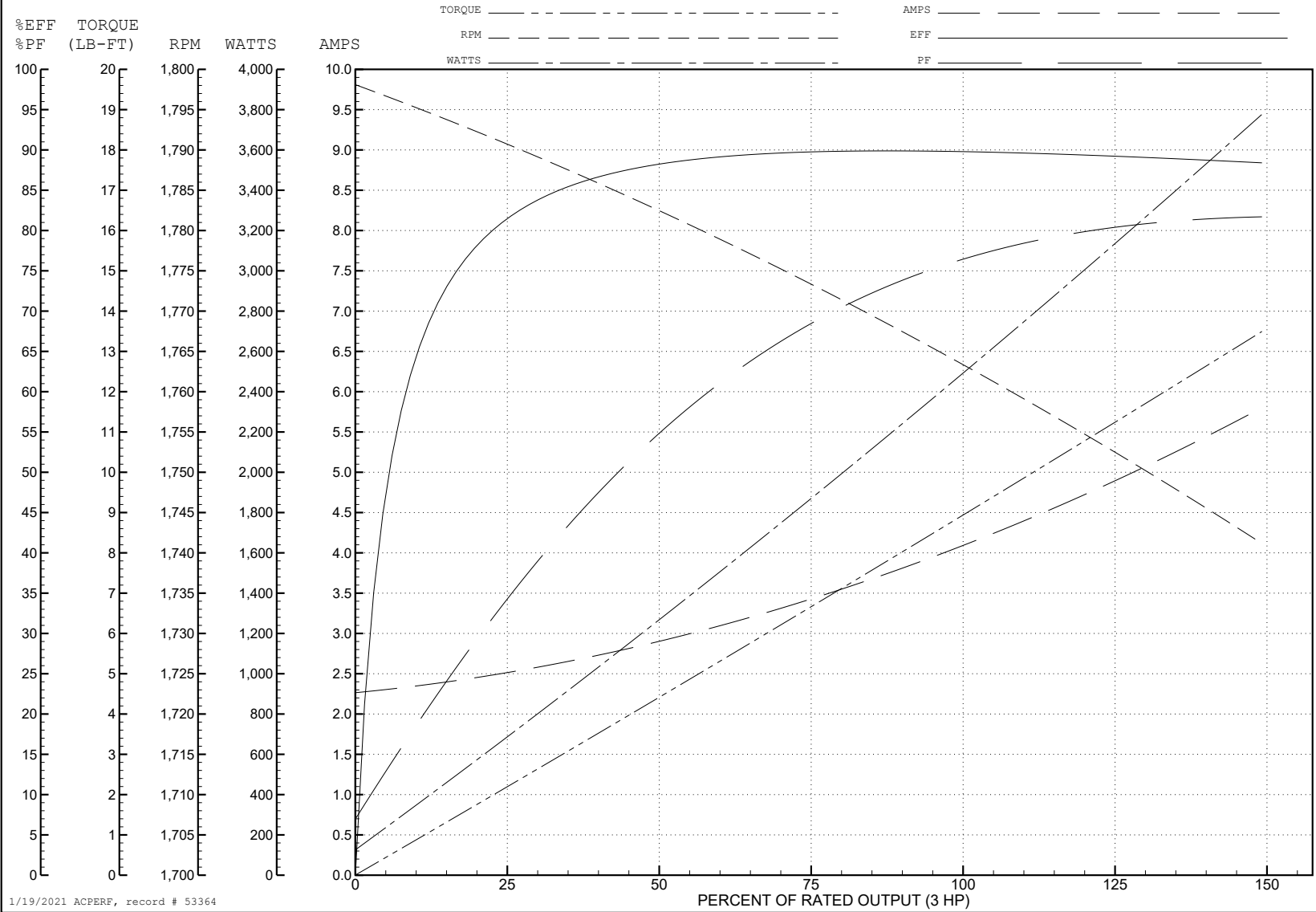
ABB Motors and Mechanical Inc.

WINDING # 36WGS266

Typical performance - not guaranteed values.

3 HP 3 PH 60 HZ 1760 RPM 460 V 3632M

TORQUES (LB-FT): PO=37.6 PU=15.2 LR=21.7 LRA=32.7



1/19/2021 ACPERF, record # 53364

AC Induction Motor Performance Data

Record # 57957

Typical performance - not guaranteed values

Winding: 36WGS266-R006		Type: 3632M		Enclosure: TEFC	
Nameplate Data			230 V, 60 Hz: Low Voltage Connection		
Rated Output (HP)		3	Full Load Torque		8.8 LB-FT
Volts		230/460	Start Configuration		direct on line
Full Load Amps		8.4/4.2	Breakdown Torque		37.6 LB-FT
R.P.M.		1760	Pull-up Torque		15.2 LB-FT
Hz	60 Phase	3	Locked-rotor Torque		21.7 LB-FT
NEMA Design Code	B KVA Code	K	Starting Current		65.4 A
Service Factor (S.F.)		1.15	No-load Current		4.6 A
NEMA Nom. Eff.	89.5 Power Factor	75	Line-line Res. @ 25°C		0.953 Ω
Rating - Duty		40C AMB-CONT	Temp. Rise @ Rated Load		44°C
S.F. Amps			Temp. Rise @ S.F. Load		52°C
			Locked-rotor Power Factor		42.2
			Rotor inertia		0.298 LB-FT ²

Load Characteristics 230 V, 60 Hz, 3 HP

% of Rated Load	25	50	75	100	125	150	S.F.
Power Factor	35	55	68	75	80	82	78
Efficiency	81.1	87.8	89.6	89.8	89.7	88.2	89.7
Speed	1791	1783	1773	1764	1753	1741	1757
Line amperes	4.94	5.7	6.86	8.18	9.78	11.6	9.14

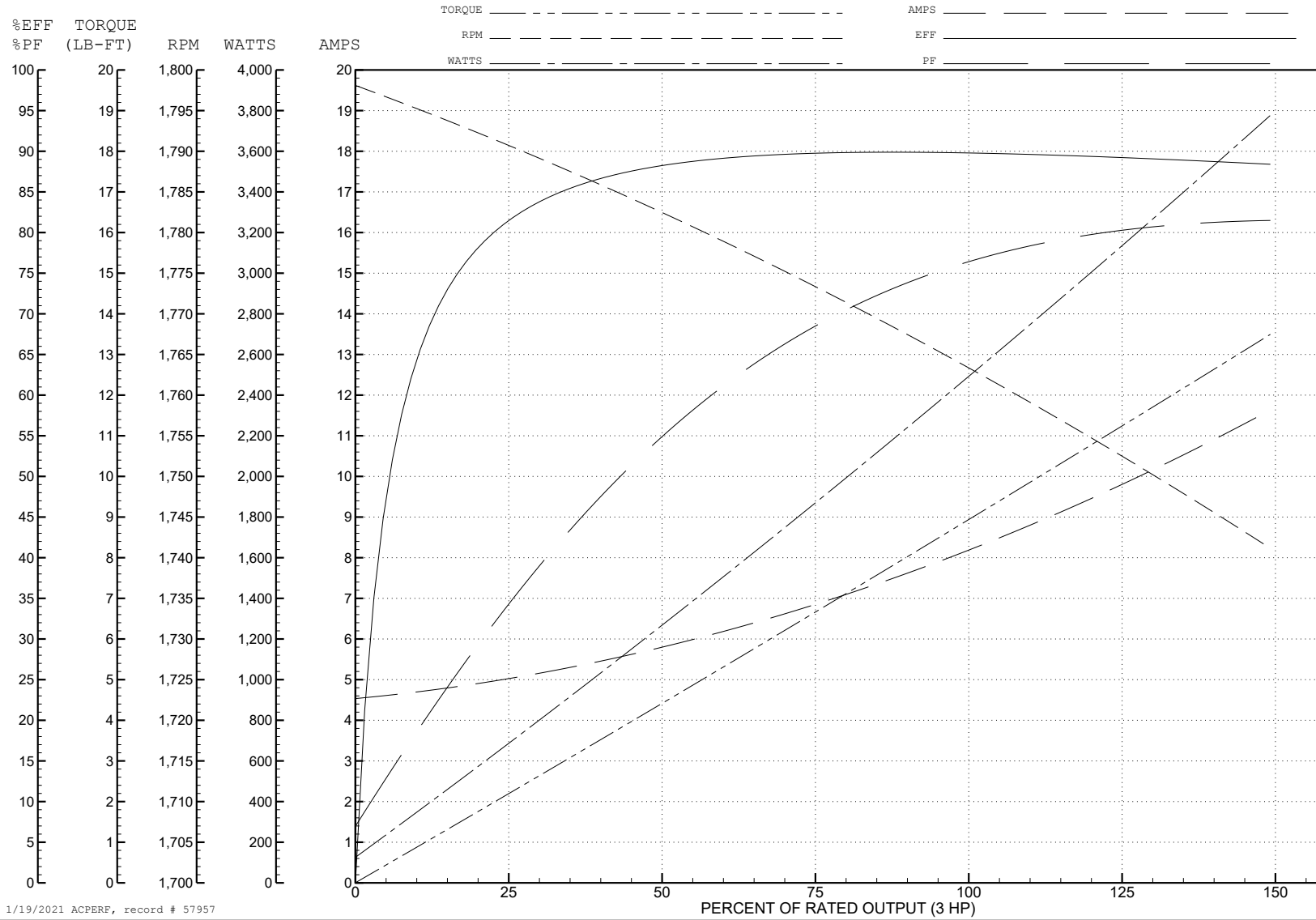
ABB Motors and Mechanical Inc.

WINDING # 36WGS266

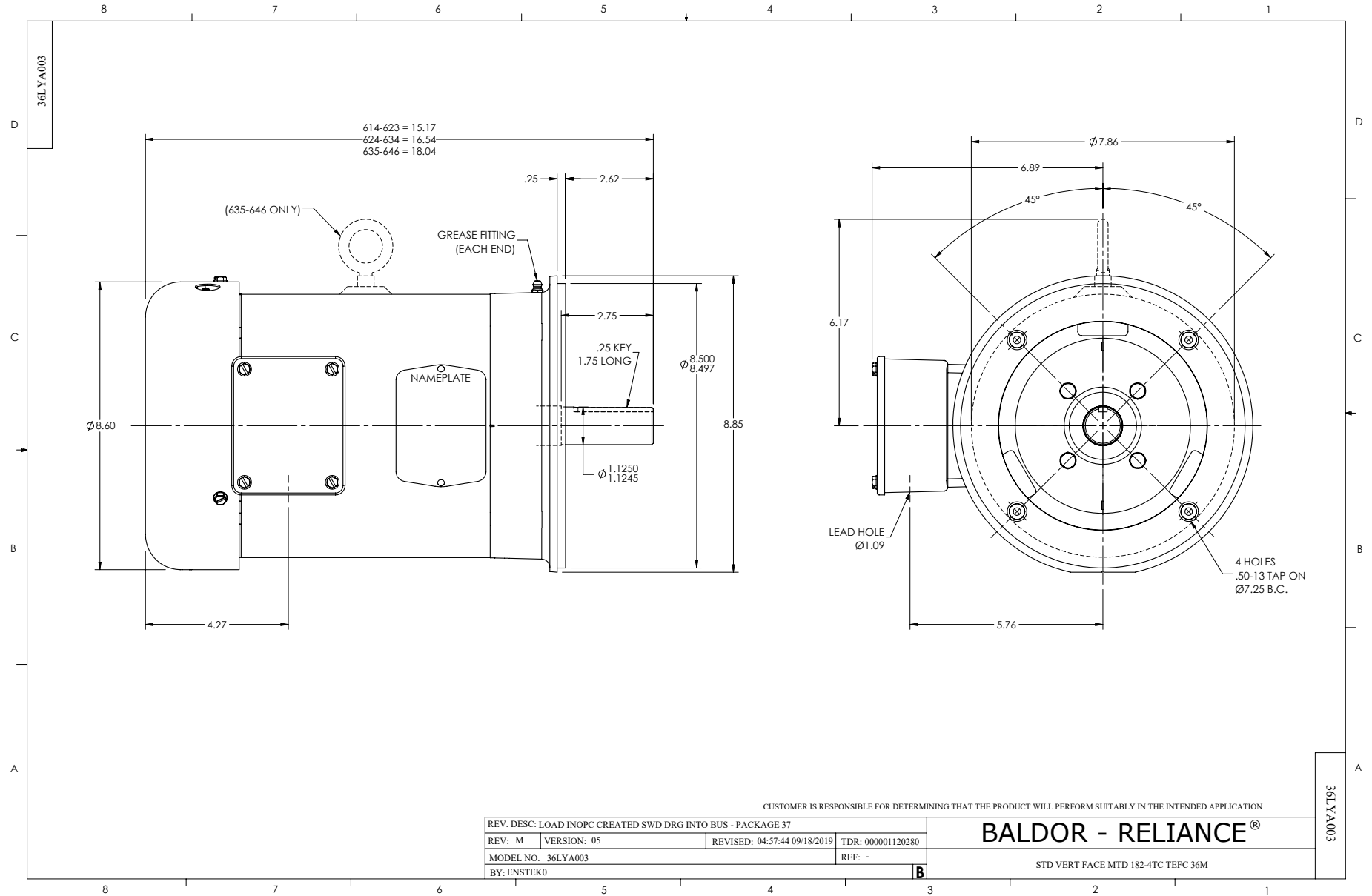
Typical performance - not guaranteed values.

3 HP 3 PH 60 HZ 1760 RPM 230 V 3632M

TORQUES (LB-FT): PO=37.6 PU=15.2 LR=21.7 LRA=65.4



1/19/2021 ACPERF, record # 57957



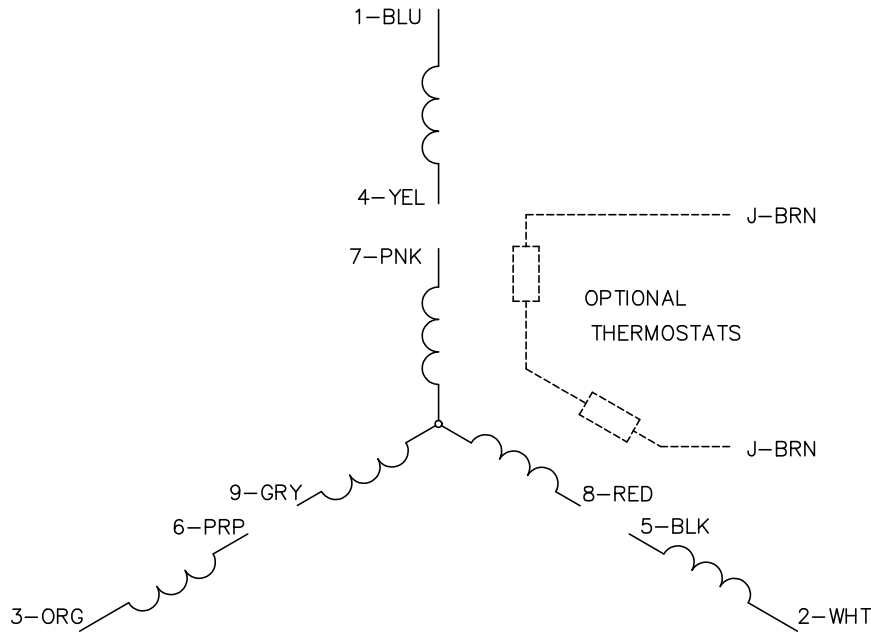
CUSTOMER IS RESPONSIBLE FOR DETERMINING THAT THE PRODUCT WILL PERFORM SUITABLY IN THE INTENDED APPLICATION

REV. DESC: LOAD INOPC CREATED SWD DRG INTO BUS - PACKAGE 37			
REV: M	VERSION: 05	REVISED: 04:57:44 09/18/2019	TDR: 000001120280
MODEL NO. 36LYA003		REF: -	
BY: ENSTEK0			

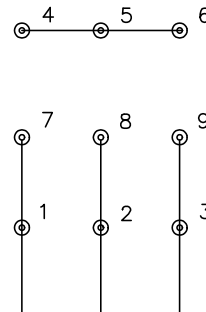
BALDOR - RELIANCE®

STD VERT FACE MTD 182-4TC TEFC 36M

CD0005

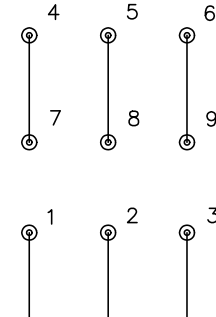


LOW VOLTAGE
(2Y)



LINE

HIGH VOLTAGE
(1Y)



LINE

NOTES:

1. INTERCHANGE ANY TWO LINE LEADS TO REVERSE ROTATION.
2. OPTIONAL THERMOSTATS ARE PROVIDED WHEN SPECIFIED.
3. ACTUAL NUMBER OF INTERNAL PARALLEL CIRCUITS MAY BE A MULTIPLE OF THOSE SHOWN ABOVE.
4. LEAD COLORS ARE OPTIONAL. LEADS MUST ALWAYS BE NUMBERED AS SHOWN.

CD0005

REV. DESC: REVISE TO SHOW OPTIONAL COLORS			
REV. LTR: E	BY: JLP	REVISED: 01/19/99 10:15	TDR: 0171435
S00000		FILE: AAA00005140	MDL: -
		MTL: -	

BALDOR ELECTRIC Co.

3PH, DV, 9 LEADS