



---

# Customer information packet

## KENM3534

.33HP, 1750RPM, 3PH, 60HZ, 56C, 3512M, TENV, F1

ELECTRIC MOTOR WHOLESAL.COM

Class - None

Division - Not Applicable

## Specifications

|                                |                                       |
|--------------------------------|---------------------------------------|
| Enclosure                      | TENV                                  |
| Frame                          | 56C                                   |
| Frame Material                 | Steel                                 |
| Frequency                      | 60.00 Hz                              |
| Output @ Frequency             | .330 HP @ 60 HZ                       |
| Phase                          | 3                                     |
| Synchronous Speed @ Frequency  | 1800 RPM @ 60 HZ                      |
| Voltage @ Frequency            | 230.0 V @ 60 HZ<br>460.0 V @ 60 HZ    |
| XP Class and Group             | None                                  |
| XP Division                    | Not Applicable                        |
| Agency Approvals               | UR<br>CSA                             |
| Ambient Temperature            | 40 °C                                 |
| Auxillary Box                  | No Auxillary Box                      |
| Auxillary Box Lead Termination | None                                  |
| Base Indicator                 | No Mounting                           |
| Bearing Grease Type            | Polyrex EM (-20F +300F)               |
| Blower                         | None                                  |
| Current @ Voltage              | .550 A @ 460.0 V<br>1.100 A @ 230.0 V |
| Design Code                    | B                                     |
| Drip Cover                     | No Drip Cover                         |
| Duty Rating                    | CONT                                  |
| Efficiency @ 100% Load         | 80.0 %                                |
| Electrically Isolated Bearing  | Not Electrically Isolated             |
| Feedback Device                | NO FEEDBACK                           |
| Front Face Code                | Standard                              |
| Front Shaft Indicator          | None                                  |
| Heater Indicator               | No Heater                             |
| High Voltage Full Load Amps    | 0.6 a                                 |
| Insulation Class               | F                                     |

## Part detail

|              |            |
|--------------|------------|
| Revision     | H          |
| Type         | AC         |
| Mech. spec.  | 35E010     |
| Base         |            |
| Status       | PRD/A      |
| Elec. spec.  | 35WGN563   |
| Layout       | 35LYE010   |
| Eff. date    | 03-28-2018 |
| CD Diagram   | CD0005     |
| Poles        | 04         |
| Leads        | 9#18       |
| Proprietary  | False      |
| Created date | 09-17-2012 |

|                                      |                     |
|--------------------------------------|---------------------|
| <b>Inverter Code</b>                 | Inverter Ready      |
| <b>KVA Code</b>                      | M                   |
| <b>Lifting Lugs</b>                  | No Lifting Lugs     |
| <b>Locked Bearing Indicator</b>      | Locked Bearing      |
| <b>Motor Lead Exit</b>               | Ko Box              |
| <b>Motor Lead Quantity/Wire Size</b> | 9 @ 18 AWG          |
| <b>Motor Lead Termination</b>        | Flying Leads        |
| <b>Motor Standards</b>               | NEMA                |
| <b>Motor Type</b>                    | 3512M               |
| <b>Mounting Arrangement</b>          | F1                  |
| <b>Number of Poles</b>               | 4                   |
| <b>Overall Length</b>                | 11.06 IN            |
| <b>Power Factor</b>                  | 70                  |
| <b>Product Family</b>                | General Purpose     |
| <b>Pulley End Bearing Type</b>       | Ball                |
| <b>Pulley Face Code</b>              | C-Face              |
| <b>Pulley Shaft Indicator</b>        | Standard            |
| <b>Rodent Screen</b>                 | None                |
| <b>RoHS Status</b>                   | ROHS COMPLIANT      |
| <b>Service Factor</b>                | 1.15                |
| <b>Shaft Diameter</b>                | 0.625 IN            |
| <b>Shaft Extension Location</b>      | Pulley End          |
| <b>Shaft Ground Indicator</b>        | No Shaft Grounding  |
| <b>Shaft Rotation</b>                | Reversible          |
| <b>Shaft Slinger Indicator</b>       | No Slinger          |
| <b>Speed</b>                         | 1750 rpm            |
| <b>Speed Code</b>                    | Single Speed        |
| <b>Starting Method</b>               | Direct on line      |
| <b>Thermal Device - Bearing</b>      | None                |
| <b>Thermal Device - Winding</b>      | None                |
| <b>Vibration Sensor Indicator</b>    | No Vibration Sensor |
| <b>Winding Thermal 1</b>             | None                |
| <b>Winding Thermal 2</b>             | None                |

**Nameplate**

| <b>NP2116L</b>      |              |             |      |                       |    |           |           |   |  |
|---------------------|--------------|-------------|------|-----------------------|----|-----------|-----------|---|--|
| <b>CAT.NO.</b>      | KENM3534     |             |      |                       |    |           |           |   |  |
| <b>SPEC.</b>        | 35E010N563G1 |             |      |                       |    |           |           |   |  |
| <b>HP</b>           | .33          |             |      |                       |    |           |           |   |  |
| <b>VOLTS</b>        | 230/460      |             |      |                       |    |           |           |   |  |
| <b>AMP</b>          | 1.1/.55      |             |      |                       |    |           |           |   |  |
| <b>RPM</b>          | 1750         |             |      |                       |    |           |           |   |  |
| <b>FRAME</b>        | 56C          |             |      | <b>HZ</b>             | 60 |           | <b>PH</b> | 3 |  |
| <b>SER.F.</b>       | 1.15         | <b>CODE</b> | M    | <b>DES</b>            | B  | <b>CL</b> | F         |   |  |
| <b>NEMA-NOM-EFF</b> | 80           | <b>PF</b>   | 70   |                       |    |           |           |   |  |
| <b>RATING</b>       | 40C AMB-CONT |             |      |                       |    |           |           |   |  |
| <b>CC</b>           |              |             |      | <b>USABLE AT 208V</b> |    |           |           |   |  |
| <b>DE</b>           | 6205         | <b>ODE</b>  | 6203 |                       |    |           |           |   |  |
| <b>ENCL</b>         | TENV         | <b>SN</b>   |      |                       |    |           |           |   |  |

## Parts list

| Part number | Description                              | Quantity |
|-------------|--|----------|
| SA251179    | SA 35E010N563G1                          | 1.000 ea |
| RA238021    | RA 35E010N563G1                          | 1.000 ea |
| NS2512A01   | INSULATOR, CONDUIT BOX X                 | 1.000 ea |
| 35CB3007    | 35 CB CASTING W/.88 DIA. LEAD HOLE       | 1.000 ea |
| 36GS1000SP  | GASKET-CONDUIT BOX, .06 THICK #SV-330 LE | 1.000 ea |
| 51XB1016A07 | 10-16 X 7/16 HXWSSLD SERTYB              | 2.000 ea |
| 11XW1032G06 | 10-32 X .38, TAPTITE II, HEX WSHR SLTD U | 1.000 ea |
| 35EP3122F00 | MASTER ODE,203 BRG,#26 DRN               | 1.000 ea |
| HW5100A03   | WAVY WASHER (W1543-017)                  | 1.000 ea |
| 35EP3307F00 | MASTER DE,205 BRG,.998SH,#26 DRN         | 1.000 ea |
| 51XN1032A20 | 10-32 X 1 1/4 HX WS SL SR                | 2.000 ea |
| 35CB4521GX  | CONDUIT BOX LID KIT **ORDER INDIV PARTS  | 1.000 ea |
| 51XW0832A07 | 8-32 X .44, TAPTITE II, HEX WSHR SLTD SE | 4.000 ea |
| HA7000A04   | KEY RETAINER 0.625 DIA SHAFTS            | 1.000 ea |
| 85XU0407S04 | 4X1/4 U DRIVE PIN STAINLESS              | 2.000 ea |
| MJ1000A02   | GREASE, MOBIL POLYREX EM - 124047        | 0.050 lb |
| HW2501D13   | KEY, 3/16 SQ X 1.375                     | 1.000 ea |
| HA3100A12   | THRUBOLT 10-32 X 7.375                   | 4.000 ea |
| MG1000Y03   | MUNSELL 2.53Y 6.70/ 4.60, GLOSS 20,      | 0.017 ga |
| LC0005E01   | CONN.DIA./WARNING LABEL (LC0005/LB1119N) | 1.000 ea |
| NP2116L     | ALUM SUPER-E UL CSA CC                   | 1.000 ea |
| 35PA1066    | PKG GRP, PRINT PK1008A06                 | 1.000 ea |
| PK3082      | STYROFOAM CRADLE                         | 1.000 ea |
| MN416A01    | TAG-INSTAL-MAINT no wire (1200/bx) 3/19  | 1.000 ea |
| PE-0000001  | ZRTG PE ASSEMBLY                         | 1.000 ea |
| FE-0000001  | ZRTG FE ASSEMBLY                         | 1.000 ea |

**AC Induction Motor Performance Data**

Record # 39804

Typical performance - not guaranteed values

| Winding: 35WGN563-R003 |                 | Type: 3512M                                      | Enclosure: TENV           |
|------------------------|-----------------|--|---------------------------|
| <b>Nameplate Data</b>  |                 | <b>460 V, 60 Hz:<br/>High Voltage Connection</b> |                           |
| Rated Output (HP)      | .33             | Full Load Torque                                 | 1 LB-FT                   |
| Volts                  | 230/460         | Start Configuration                              | direct on line            |
| Full Load Amps         | 1.1/.55         | Breakdown Torque                                 | 5.04 LB-FT                |
| R.P.M.                 | 1750            | Pull-up Torque                                   | 2.28 LB-FT                |
| Hz                     | 60 Phase        | Locked-rotor Torque                              | 3.29 LB-FT                |
| NEMA Design Code       | B KVA Code      | Starting Current                                 | 4.2 A                     |
| Service Factor (S.F.)  | 1.15            | No-load Current                                  | 0.375 A                   |
| NEMA Nom. Eff.         | 80 Power Factor | Line-line Res. @ 25°C                            | 51.2 Ω                    |
| Rating - Duty          | 40C AMB-CONT    | Temp. Rise @ Rated Load                          | 37°C                      |
| S.F. Amps              |                 | Temp. Rise @ S.F. Load                           | 43°C                      |
|                        |                 | Locked-rotor Power Factor                        | 68                        |
|                        |                 | Rotor inertia                                    | 0.0709 LB-FT <sup>2</sup> |

**Load Characteristics 460 V, 60 Hz, 0.33 HP**

| % of Rated Load | 25   | 50    | 75    | 100   | 125   | 150   | S.F. |
|-----------------|------|-------|-------|-------|-------|-------|------|
| Power Factor    | 30   | 47    | 61    | 71    | 78    | 81    | 74   |
| Efficiency      | 66.6 | 77.8  | 81.3  | 82.3  | 82.3  | 81.2  | 80.3 |
| Speed           | 1785 | 1772  | 1758  | 1744  | 1728  | 1710  | 1745 |
| Line amperes    | 0.39 | 0.422 | 0.474 | 0.534 | 0.607 | 0.702 | 0.6  |

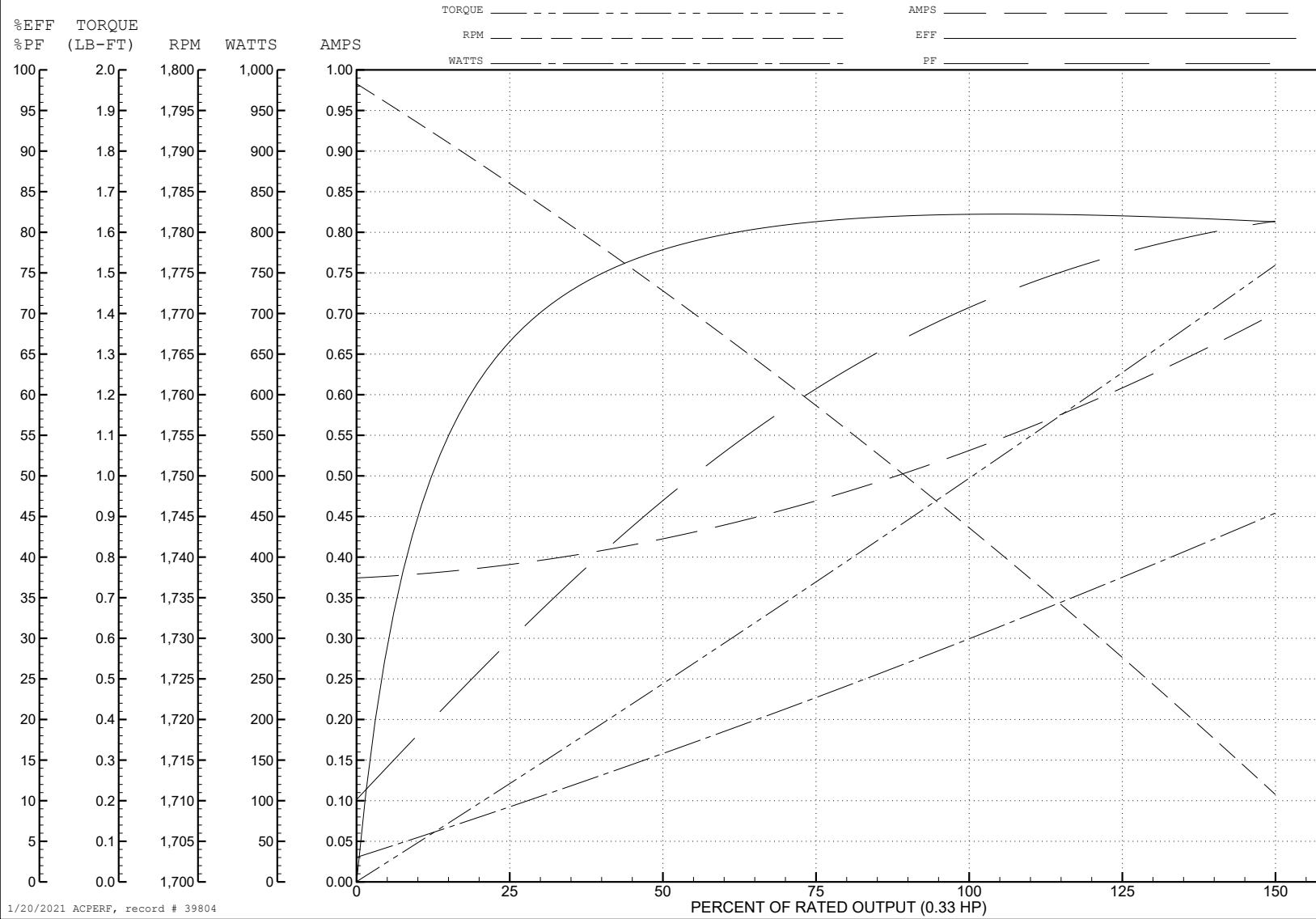
ABB Motors and Mechanical Inc.

WINDING # 35WGN563

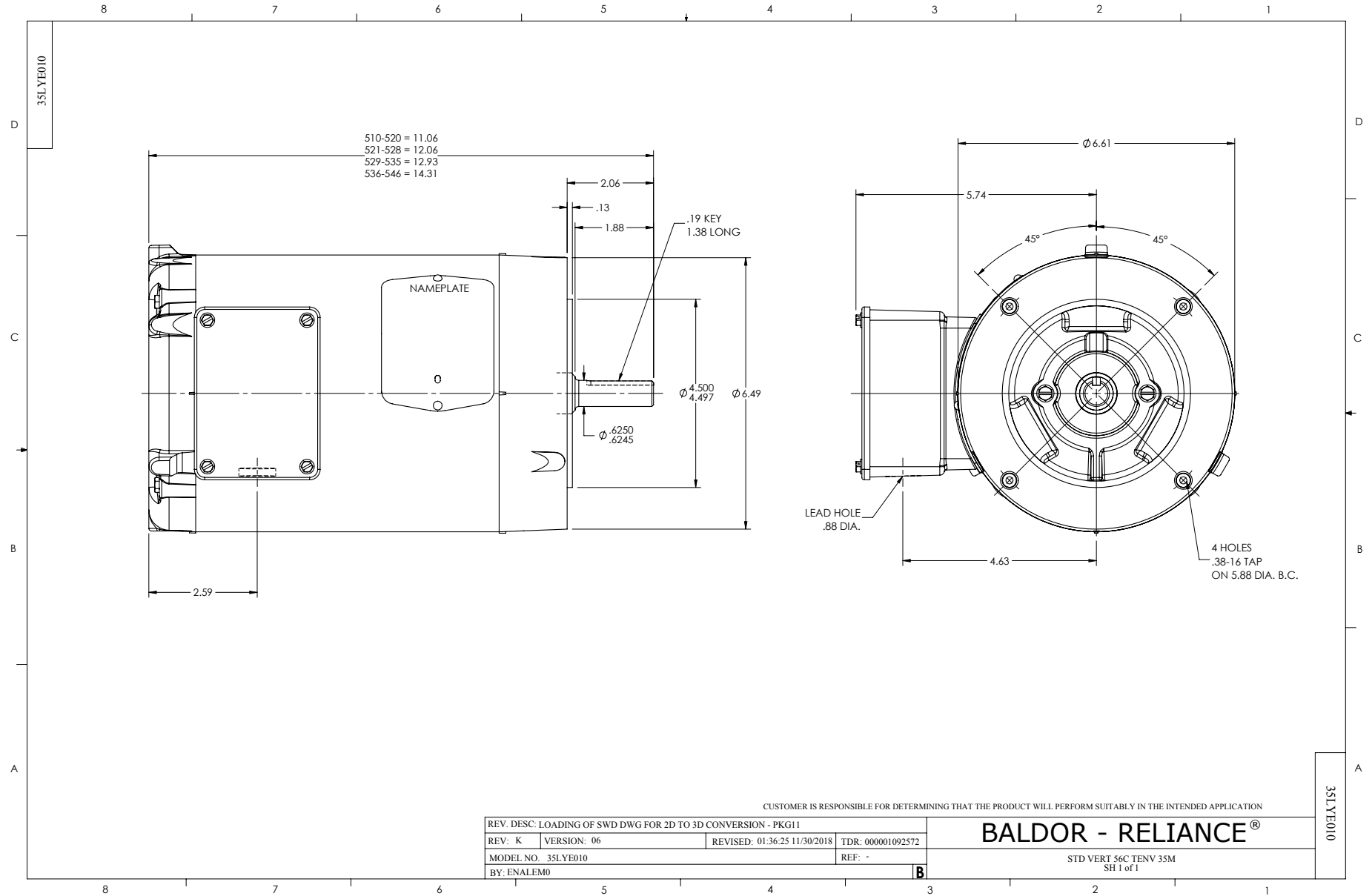
0.33 HP 3 PH 60 HZ 1750 RPM 460 V 3512M

Typical performance - not guaranteed values.

TORQUES (LB-FT): PO=5.04 PU=2.28 LR=3.29 LRA=4.2

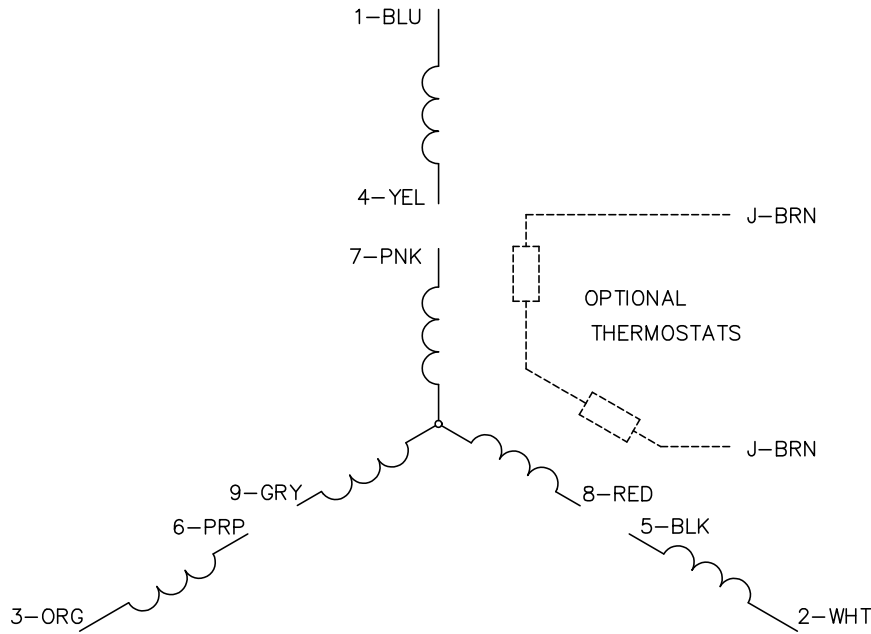


1/20/2021 ACPERF, record # 39804





CD0005



LOW VOLTAGE  
(2Y)



LINE

HIGH VOLTAGE  
(1Y)



LINE

NOTES:

1. INTERCHANGE ANY TWO LINE LEADS TO REVERSE ROTATION.
2. OPTIONAL THERMOSTATS ARE PROVIDED WHEN SPECIFIED.
3. ACTUAL NUMBER OF INTERNAL PARALLEL CIRCUITS MAY BE A MULTIPLE OF THOSE SHOWN ABOVE.
4. LEAD COLORS ARE OPTIONAL. LEADS MUST ALWAYS BE NUMBERED AS SHOWN.

CD0005

|   |         |                         |              |
|---|---------|-------------------------|--------------|
| REV. DESC: REVISE TO SHOW OPTIONAL COLORS |         |                         |              |
| REV. LTR: E                               | BY: JLP | REVISED: 01/19/99 10:15 | TDR: 0171435 |
| S00000                                    |         | FILE: AAA00005140       | MDL: -       |
|   |         | MTL: -                  |              |

**BALDOR ELECTRIC Co.**

3PH, DV, 9 LEADS