



Customer information packet

EM3611

3HP, 1760RPM, 3PH, 60HZ, 182, 3632M, TEFC, F1, N

ELECTRIC MOTOR WHOLESAL.COM

Class - None

Division - Not Applicable

Specifications

| | |
|--------------------------------|---|
| Enclosure | TEFC |
| Frame | 182 |
| Frame Material | Steel |
| Frequency | 60.00 Hz |
| Output @ Frequency | 3.000 HP @ 60 HZ |
| Phase | 3 |
| Synchronous Speed @ Frequency | 1800 RPM @ 60 HZ |
| Voltage @ Frequency | 460.0 V @ 60 HZ 230.0 V @ 60 HZ |
| XP Class and Group | None |
| XP Division | Not Applicable |
| Agency Approvals | CSA CSA EEV UR |
| Ambient Temperature | 40 °C |
| Auxillary Box | No Auxillary Box |
| Auxillary Box Lead Termination | None |
| Base Indicator | Rigid |
| Bearing Grease Type | Polyrex EM (-20F +300F) |
| Blower | None |
| Current @ Voltage | 4.200 A @ 460.0 V 8.400 A @ 230.0 V 9.000 A @ 208.0 V |
| Design Code | B |
| Drip Cover | No Drip Cover |
| Duty Rating | CONT |
| Efficiency @ 100% Load | 89.5 % |
| Electrically Isolated Bearing | Not Electrically Isolated |
| Feedback Device | NO FEEDBACK |
| Front Face Code | Standard |
| Front Shaft Indicator | None |
| Heater Indicator | No Heater |

Part detail

| | |
|--------------|------------|
| Revision | H |
| Type | AC |
| Mech. spec. | 36A011 |
| Base | |
| Status | PRD/A |
| Elec. spec. | 36WGS266 |
| Layout | 36LYA011 |
| Eff. date | 12-07-2020 |
| CD Diagram | CD0005 |
| Poles | 04 |
| Leads | 9#16 |
| Proprietary | False |
| Created date | 02-27-2015 |

| | |
|-------------------------------|---------------------|
| High Voltage Full Load Amps | 4.2 a |
| Insulation Class | F |
| Inverter Code | Inverter Ready |
| KVA Code | K |
| Lifting Lugs | No Lifting Lugs |
| Locked Bearing Indicator | No Locked Bearing |
| Motor Lead Exit | Ko Box |
| Motor Lead Quantity/Wire Size | 9 @ 16 AWG |
| Motor Lead Termination | Flying Leads |
| Motor Standards | NEMA |
| Motor Type | 3632M |
| Mounting Arrangement | F1 |
| Number of Poles | 4 |
| Overall Length | 15.69 IN |
| Power Factor | 75 |
| Product Family | General Purpose |
| Pulley End Bearing Type | Ball |
| Pulley Face Code | Standard |
| Pulley Shaft Indicator | Standard |
| Rodent Screen | None |
| Service Factor | 1.15 |
| Shaft Diameter | 0.875 IN |
| Shaft Extension Location | Pulley End |
| Shaft Ground Indicator | No Shaft Grounding |
| Shaft Rotation | Reversible |
| Shaft Slinger Indicator | No Slinger |
| Speed | 1760 rpm |
| Speed Code | Single Speed |
| Starting Method | Direct on line |
| Thermal Device - Bearing | None |
| Thermal Device - Winding | None |
| Vibration Sensor Indicator | No Vibration Sensor |
| Winding Thermal 1 | None |
| Winding Thermal 2 | None |

Nameplate

| NP1259L | | | | | | | | | |
|---------------------|--------------|-------------|-----------------------|------------|---|-----------|---|--|--|
| CAT.NO. | EM3611 | | | | | | | | |
| SPEC. | 36A011S266G1 | | | | | | | | |
| HP | 3 | | | | | | | | |
| VOLTS | 230/460 | | | | | | | | |
| AMP | 8.4/4.2 | | | | | | | | |
| RPM | 1760 | | | | | | | | |
| FRAME | 182 | | HZ | 60 | | PH | 3 | | |
| SER.F. | 1.15 | CODE | K | DES | B | CL | F | | |
| NEMA-NOM-EFF | 89.5 | PF | 75 | | | | | | |
| RATING | 40C AMB-CONT | | | | | | | | |
| CC | 010A | | USABLE AT 208V | | | | 9 | | |
| DE | 6206 | | ODE | 6205 | | | | | |
| ENCL | TEFC | SN | | | | | | | |

Parts list

| Part number | Description | Quantity |
|---------------|--|----------|
| SA294542 | SA 36A011S266G1 | 1.000 ea |
| RA280621 | RA 36A011S266G1 | 1.000 ea |
| 36FN3000C01SP | EXFN, PLASTIC, 5.25 OD, .912 ID | 1.000 ea |
| 36CB3004 | 36 CB CASTING W/1.09 DIA LEAD HOLE @ 6:0 | 1.000 ea |
| 36GS1000SP | GASKET-CONDUIT BOX, .06 THICK #SV-330 LE | 1.000 ea |
| 51XB1016A08 | 10-16X 1/2HXWSSLD SERTYB | 2.000 ea |
| 11XW1032G06 | 10-32 X .38, TAPTITE II, HEX WSHR SLTD U | 1.000 ea |
| HW3001B01 | BRASS CUP WASHER, FOR #10 SCREW | 1.000 ea |
| 36EP3104A01 | FREP MACH ASSEMBLY FOR ROUTING | 1.000 ea |
| HW4500A01 | 1641B(ALEMITE)400 UNIV, GREASE FITT | 1.000 ea |
| HW5100A05 | WVY WSHR F/205 & 304 BRGS | 1.000 ea |
| 36EP3100A01SP | PUEP ASSEMBLY FOR ROUTING PURPOSES | 1.000 ea |
| HW4500A01 | 1641B(ALEMITE)400 UNIV, GREASE FITT | 1.000 ea |
| XY2520A12 | 1/4-20 HEX NUT, DIRECTIONAL SERRATIONS | 4.000 ea |
| 51XB1214A16 | 12-14X1.00 HXWSSLD SERTYB | 1.000 ea |
| 36FH4009A102 | IEC FH GREASER PRIMED | 1.000 ea |
| 51XW1032A06 | 10-32 X .38, TAPTITE II, HEX WSHR SLTD S | 3.000 ea |
| 36CB4516 | 750LIPPED CB LID - GALVANNEAL | 1.000 ea |
| 37GS1001SP | GASKET, CONDUIT BOX LID, .06 THICK LEXID | 1.000 ea |
| 51XW0832A07 | 8-32 X .44, TAPTITE II, HEX WSHR SLTD SE | 4.000 ea |
| HW2501D13 | KEY, 3/16 SQ X 1.375 | 1.000 ea |
| HA7000A01 | KEY RETAINER 7/8" DIA SHAFT | 1.000 ea |
| 85XU0407S04 | 4X1/4 U DRIVE PIN STAINLESS | 2.000 ea |
| MJ1000A02 | GREASE, MOBIL POLYREX EM - 124047 | 0.050 lb |
| MG1000Y03 | MUNSELL 2.53Y 6.70/ 4.60, GLOSS 20, | 0.022 ga |
| HA3101A25 | THRUBOLT 1/4-20 X 11.000 OHIO ROD | 4.000 ea |
| LC0005E01 | CONN.DIA./WARNING LABEL (LC0005/LB1119N) | 1.000 ea |
| NP1259L | ALUM SUPER-E UL CSA-EEV CC NEMA PREMIUM | 1.000 ea |
| 36PA1001 | PKG GRP, PRINT PK1017A06 | 1.000 ea |
| MN416A01 | TAG-INSTAL-MAINT no wire (1200/bx) 3/19 | 1.000 ea |

AC Induction Motor Performance Data

Record # 53364

Typical performance - not guaranteed values

| Winding: 36WGS266-R006 | | Type: 3632M | Enclosure: TEFC | |
|------------------------|-------------------|--------------|--|--------------------------|
| Nameplate Data | | | 460 V, 60 Hz: High Voltage Connection | |
| Rated Output (HP) | | 3 | Full Load Torque | 8.8 LB-FT |
| Volts | | 230/460 | Start Configuration | direct on line |
| Full Load Amps | | 8.4/4.2 | Breakdown Torque | 37.6 LB-FT |
| R.P.M. | | 1760 | Pull-up Torque | 15.2 LB-FT |
| Hz | 60 Phase | 3 | Locked-rotor Torque | 21.7 LB-FT |
| NEMA Design Code | B KVA Code | K | Starting Current | 32.7 A |
| Service Factor (S.F.) | | 1.15 | No-load Current | 2.3 A |
| NEMA Nom. Eff. | 89.5 Power Factor | 75 | Line-line Res. @ 25°C | 3.81 Ω |
| Rating - Duty | | 40C AMB-CONT | Temp. Rise @ Rated Load | 44°C |
| S.F. Amps | | | Temp. Rise @ S.F. Load | 52°C |
| | | | Locked-rotor Power Factor | 42.2 |
| | | | Rotor inertia | 0.298 LB-FT ² |

Load Characteristics 460 V, 60 Hz, 3 HP

| % of Rated Load | 25 | 50 | 75 | 100 | 125 | 150 | S.F. |
|-----------------|------|------|------|------|------|------|------|
| Power Factor | 35 | 55 | 68 | 75 | 80 | 82 | 77 |
| Efficiency | 81.1 | 87.8 | 89.6 | 89.8 | 89.7 | 88.2 | 89.2 |
| Speed | 1791 | 1783 | 1773 | 1764 | 1753 | 1741 | 1754 |
| Line amperes | 2.47 | 2.85 | 3.43 | 4.09 | 4.89 | 5.78 | 4.63 |

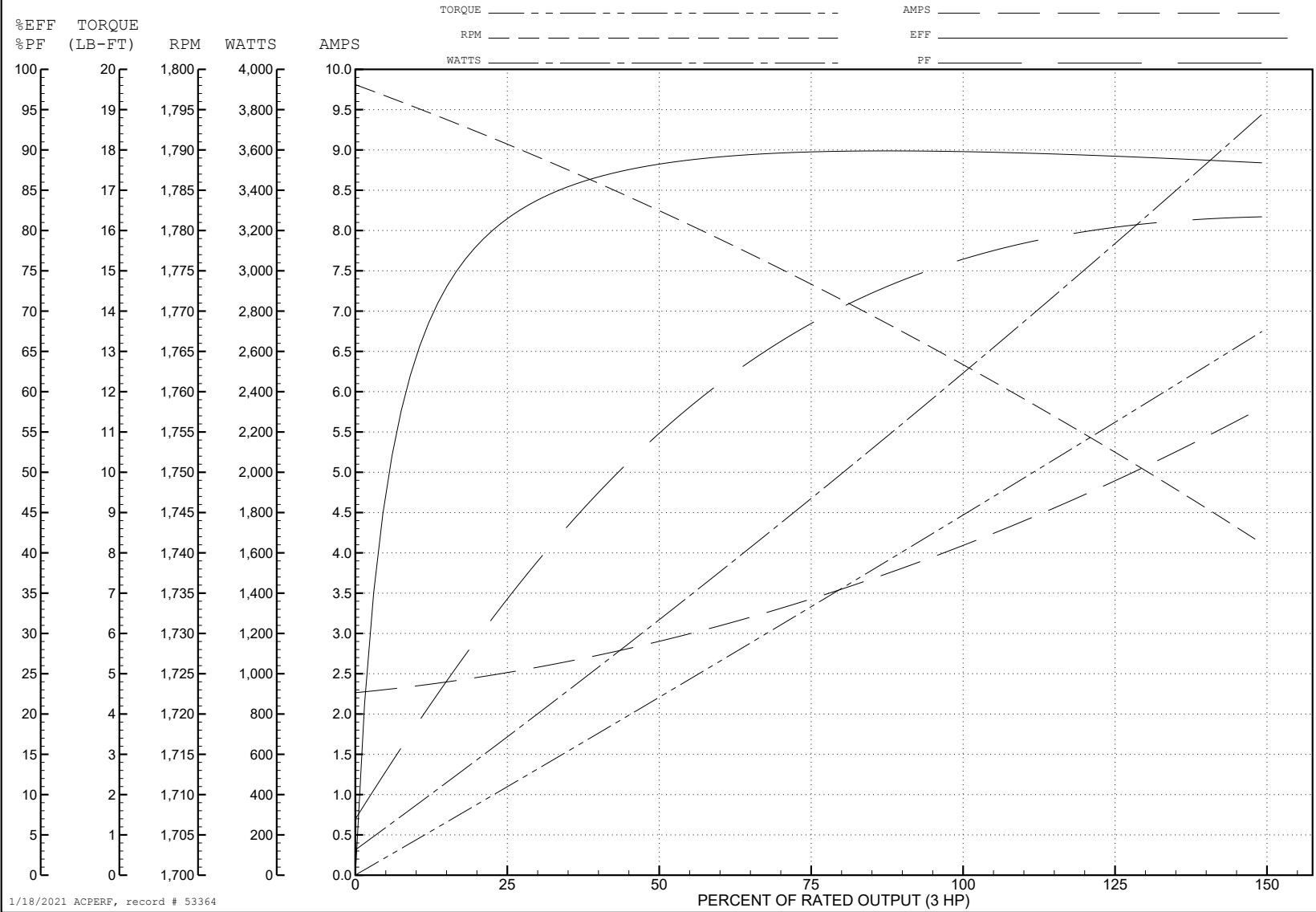
ABB Motors and Mechanical Inc.

WINDING # 36WGS266

3 HP 3 PH 60 HZ 1760 RPM 460 V 3632M

Typical performance - not guaranteed values.

TORQUES (LB-FT): PO=37.6 PU=15.2 LR=21.7 LRA=32.7



1/18/2021 ACPERF, record # 53364

AC Induction Motor Performance Data

Record # 57957

Typical performance - not guaranteed values

| Winding: 36WGS266-R006 | | Type: 3632M | | Enclosure: TEFC | |
|-------------------------------|-------------------|--------------------|---|------------------------|--------------------------|
| Nameplate Data | | | 230 V, 60 Hz: Low Voltage Connection | | |
| Rated Output (HP) | | 3 | Full Load Torque | | 8.8 LB-FT |
| Volts | | 230/460 | Start Configuration | | direct on line |
| Full Load Amps | | 8.4/4.2 | Breakdown Torque | | 37.6 LB-FT |
| R.P.M. | | 1760 | Pull-up Torque | | 15.2 LB-FT |
| Hz | 60 Phase | 3 | Locked-rotor Torque | | 21.7 LB-FT |
| NEMA Design Code | B KVA Code | K | Starting Current | | 65.4 A |
| Service Factor (S.F.) | | 1.15 | No-load Current | | 4.6 A |
| NEMA Nom. Eff. | 89.5 Power Factor | 75 | Line-line Res. @ 25°C | | 0.953 Ω |
| Rating - Duty | | 40C AMB-CONT | Temp. Rise @ Rated Load | | 44°C |
| S.F. Amps | | | Temp. Rise @ S.F. Load | | 52°C |
| | | | Locked-rotor Power Factor | | 42.2 |
| | | | Rotor inertia | | 0.298 LB-FT ² |

Load Characteristics 230 V, 60 Hz, 3 HP

| % of Rated Load | 25 | 50 | 75 | 100 | 125 | 150 | S.F. |
|------------------------|-----------|-----------|-----------|------------|------------|------------|-------------|
| Power Factor | 35 | 55 | 68 | 75 | 80 | 82 | 78 |
| Efficiency | 81.1 | 87.8 | 89.6 | 89.8 | 89.7 | 88.2 | 89.7 |
| Speed | 1791 | 1783 | 1773 | 1764 | 1753 | 1741 | 1757 |
| Line amperes | 4.94 | 5.7 | 6.86 | 8.18 | 9.78 | 11.6 | 9.14 |

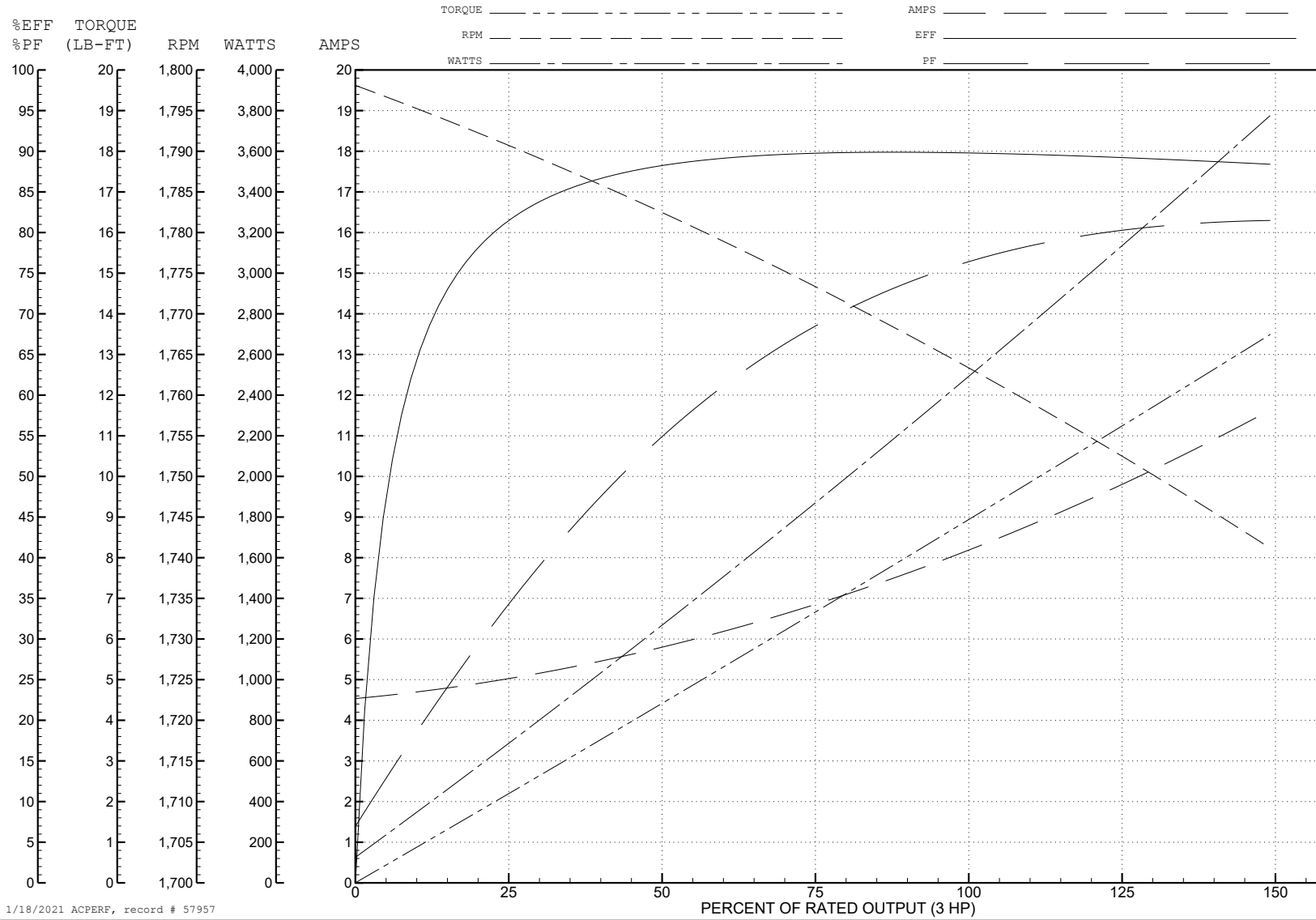
ABB Motors and Mechanical Inc.

WINDING # 36WGS266

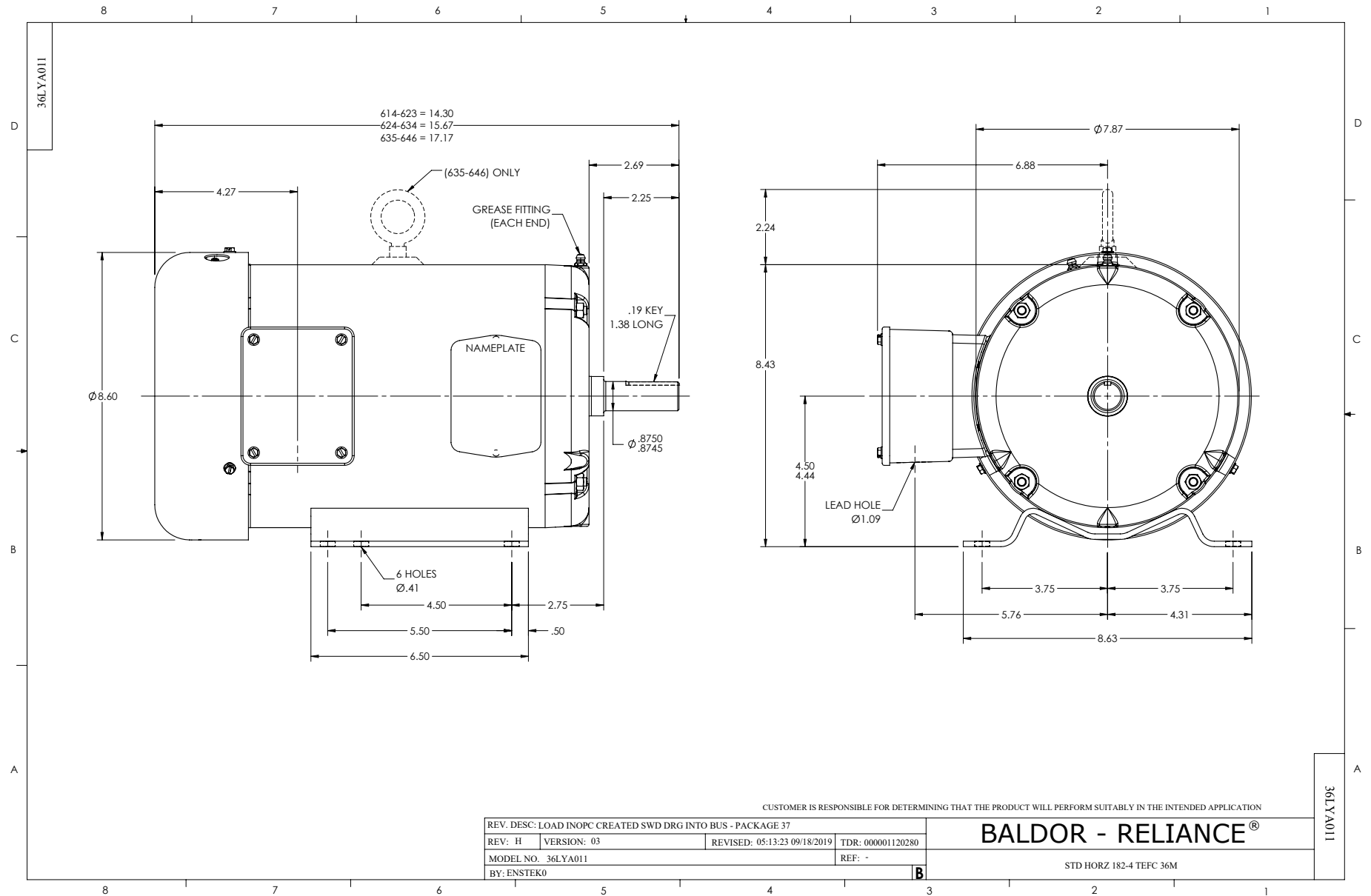
3 HP 3 PH 60 HZ 1760 RPM 230 V 3632M

Typical performance - not guaranteed values.

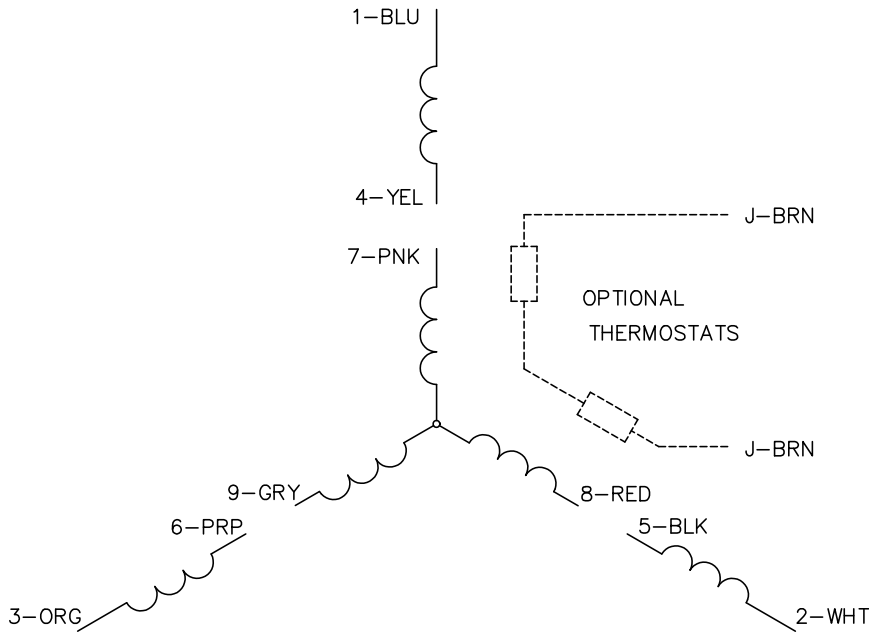
TORQUES (LB-FT): PO=37.6 PU=15.2 LR=21.7 LRA=65.4



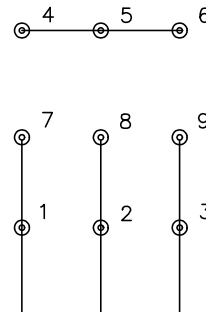
1/18/2021 ACPERF, record # 57957



CD0005

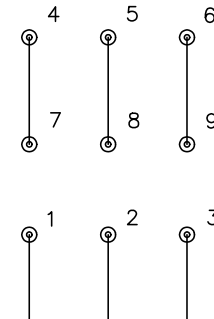


LOW VOLTAGE
(2Y)



LINE

HIGH VOLTAGE
(1Y)



LINE

NOTES:

1. INTERCHANGE ANY TWO LINE LEADS TO REVERSE ROTATION.
2. OPTIONAL THERMOSTATS ARE PROVIDED WHEN SPECIFIED.
3. ACTUAL NUMBER OF INTERNAL PARALLEL CIRCUITS MAY BE A MULTIPLE OF THOSE SHOWN ABOVE.
4. LEAD COLORS ARE OPTIONAL. LEADS MUST ALWAYS BE NUMBERED AS SHOWN.

CD0005

| | | | |
|---|---------|-------------------------|--------------|
| REV. DESC: REVISE TO SHOW OPTIONAL COLORS | | | |
| REV. LTR: E | BY: JLP | REVISED: 01/19/99 10:15 | TDR: 0171435 |
| S00000 | | FILE: AAA00005140 | MDL: - |
| | | MTL: - | |

BALDOR ELECTRIC Co.

3PH, DV, 9 LEADS