



Customer information packet

CNM3531

.25HP, 1140RPM, 3PH, 60HZ, 56C, 3516M, TENV, F1

ELECTRIC MOTOR WHOLESALE.COM

Class - None

Division - Not Applicable

Specifications

Enclosure	TENV
Frame	56C
Frame Material	Steel
Frequency	60.00 Hz
Output @ Frequency	.250 HP @ 60 HZ
Phase	3
Synchronous Speed @ Frequency	1200 RPM @ 60 HZ
Voltage @ Frequency	208.0 V @ 60 HZ 230.0 V @ 60 HZ 460.0 V @ 60 HZ
XP Class and Group	None
XP Division	Not Applicable
Agency Approvals	UR CSA
Ambient Temperature	40 °C
Auxillary Box	No Auxillary Box
Auxillary Box Lead Termination	None
Base Indicator	Rigid
Bearing Grease Type	Polyrex EM (-20F +300F)
Blower	None
Current @ Voltage	.500 A @ 460.0 V 1.000 A @ 230.0 V 1.100 A @ 208.0 V
Design Code	B
Drip Cover	No Drip Cover
Duty Rating	CONT
Efficiency @ 100% Load	68.0 %
Electrically Isolated Bearing	Not Electrically Isolated
Feedback Device	NO FEEDBACK
Front Face Code	Standard
Front Shaft Indicator	None
Heater Indicator	No Heater

Part detail

Revision	M
Type	AC
Mech. spec.	35E012
Base	
Status	PRD/A
Elec. spec.	35WGX086
Layout	35LYE012
Eff. date	03-28-2018
CD Diagram	CD0005
Poles	06
Leads	9#18
Proprietary	False
Created date	06-19-2008

High Voltage Full Load Amps	0.5 a
Insulation Class	F
Inverter Code	Not Inverter
KVA Code	L
Lifting Lugs	No Lifting Lugs
Locked Bearing Indicator	Locked Bearing
Motor Lead Exit	Ko Box
Motor Lead Quantity/Wire Size	9 @ 18 AWG
Motor Lead Termination	Flying Leads
Motor Standards	NEMA
Motor Type	3516M
Mounting Arrangement	F1
Number of Poles	6
Overall Length	11.06 IN
Power Factor	64
Product Family	General Purpose
Pulley End Bearing Type	Ball
Pulley Face Code	C-Face
Pulley Shaft Indicator	Standard
Rodent Screen	None
Service Factor	1.35
Shaft Diameter	0.625 IN
Shaft Extension Location	Pulley End
Shaft Ground Indicator	No Shaft Grounding
Shaft Rotation	Reversible
Shaft Slinger Indicator	No Slinger
Speed	1140 rpm
Speed Code	Single Speed
Starting Method	Direct on line
Thermal Device - Bearing	None
Thermal Device - Winding	None
Vibration Sensor Indicator	No Vibration Sensor
Winding Thermal 1	None
Winding Thermal 2	None

Nameplate

NP1256L									
CAT.NO.	CNM3531								
SPEC.	35E012X086G3								
HP	.25								
VOLTS	208-230/460								
AMP	1.1-1/.5								
RPM	1140								
FRAME	56C		HZ	60		PH	3		
SER.F.	1.35	CODE	L	DES	B	CLASS	F		
NEMA-NOM-EFF	68	PF	64						
RATING	40C AMB-CONT								
CC		USABLE AT 208V							
DE	6205	ODE	6203						
ENCL	TENV	SN							
	SFA 1.3-1.2/.6								

Parts list

Part number	Description	Quantity
SA172810	SA 35E012X086G3	1.000 ea
RA161007	RA 35E012X086G3	1.000 ea
S/P111-000-002	CORONA TEST, SUPER E MOTORS - FT. SMITH	1.000 ea
NS2512A01	INSULATOR, CONDUIT BOX X	1.000 ea
35CB3007	35 CB CASTING W/.88 DIA. LEAD HOLE	1.000 ea
36GS1000SP	GASKET-CONDUIT BOX, .06 THICK #SV-330 LE	1.000 ea
51XB1016A07	10-16 X 7/16 HXWSSLD SERTYB	2.000 ea
11XW1032G06	10-32 X .38, TAPTITE II, HEX WSHR SLTD U	1.000 ea
35EP3122F00	MASTER ODE,203 BRG,#26 DRN	1.000 ea
HW5100A03	WAVY WASHER (W1543-017)	1.000 ea
35EP3307F00	MASTER DE,205 BRG,.998SH,#26 DRN	1.000 ea
51XN1032A20	10-32 X 1 1/4 HX WS SL SR	2.000 ea
35CB4521GX	CONDUIT BOX LID KIT **ORDER INDIV PARTS	1.000 ea
51XW0832A07	8-32 X .44, TAPTITE II, HEX WSHR SLTD SE	4.000 ea
HW2501D13	KEY, 3/16 SQ X 1.375	1.000 ea
HA7000A04	KEY RETAINER 0.625 DIA SHAFTS	1.000 ea
85XU0407S04	4X1/4 U DRIVE PIN STAINLESS	2.000 ea
MJ1000A02	GREASE, MOBIL POLYREX EM - 124047	0.050 lb
MG1000G27	MED CHARCOAL METALLIC GREY 400-0096	0.017 ga
HA3100A12	THRUBOLT 10-32 X 7.375	4.000 ea
LC0005E01	CONN.DIA./WARNING LABEL (LC0005/LB1119N)	1.000 ea
NP1256L	ALUM UL CSA CC INDUSTRIAL MOTOR A60	1.000 ea
35PA1066	PKG GRP, PRINT PK1008A06	1.000 ea
MN416A01	TAG-INSTAL-MAINT no wire (1200/bx) 3/19	1.000 ea
PE-0000001	ZRTG PE ASSEMBLY	1.000 ea
FE-0000001	ZRTG FE ASSEMBLY	1.000 ea

AC Induction Motor Performance Data

Record # 61813

Typical performance - not guaranteed values

Winding: 35WGX086-R011		Type: 3516M		Enclosure: TENV	
Nameplate Data			460 V, 60 Hz: High Voltage Connection		
Rated Output (HP)	.25	Full Load Torque	1.1 LB-FT		
Volts	208-230/460	Start Configuration	direct on line		
Full Load Amps	1.1-1/.5	Breakdown Torque	5.4 LB-FT		
R.P.M.	1140	Pull-up Torque	2 LB-FT		
Hz	60 Phase	3	Locked-rotor Torque	3 LB-FT	
NEMA Design Code	B KVA Code	L	Starting Current	2.9 A	
Service Factor (S.F.)		1.35	No-load Current	0.41 A	
NEMA Nom. Eff.	68 Power Factor	64	Line-line Res. @ 25°C	86.3 Ω	
Rating - Duty	40C AMB-CONT		Temp. Rise @ Rated Load	45°C	
S.F. Amps	1.3-1.2/.6		Temp. Rise @ S.F. Load	59°C	
			Locked-rotor Power Factor	70	
			Rotor inertia	0.0949 LB-FT ²	

Load Characteristics 460 V, 60 Hz, 0.25 HP

% of Rated Load	25	50	75	100	125	150	S.F.
Power Factor	30	42	54	62	68	73	70
Efficiency	46.8	62.1	67.9	71.8	72.3	72	72.2
Speed	1187	1176	1165	1153	1139	1124	1133
Line amperes	0.42	0.44	0.47	0.51	0.57	0.63	0.594

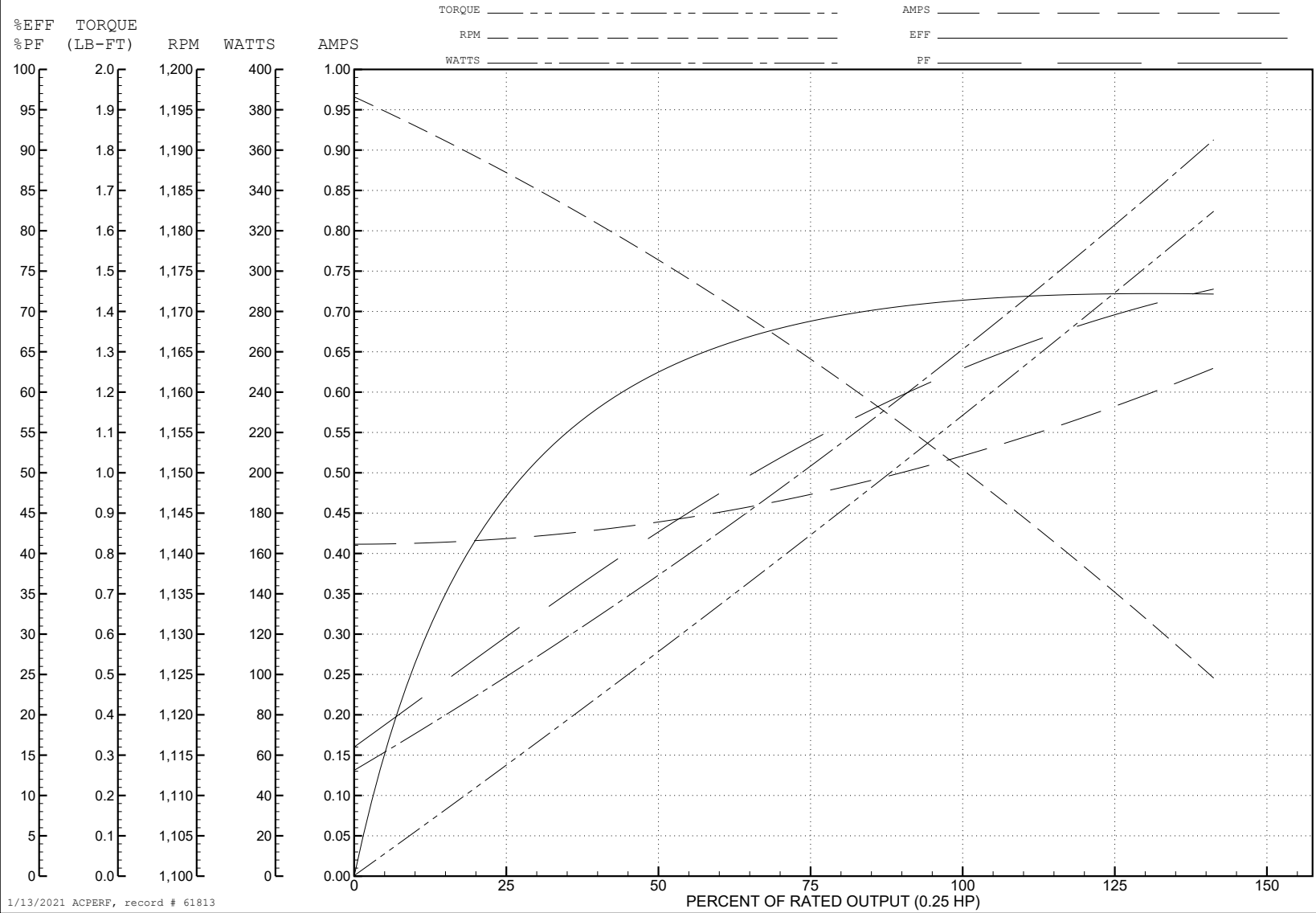
ABB Motors and Mechanical Inc.

WINDING # 35WG086

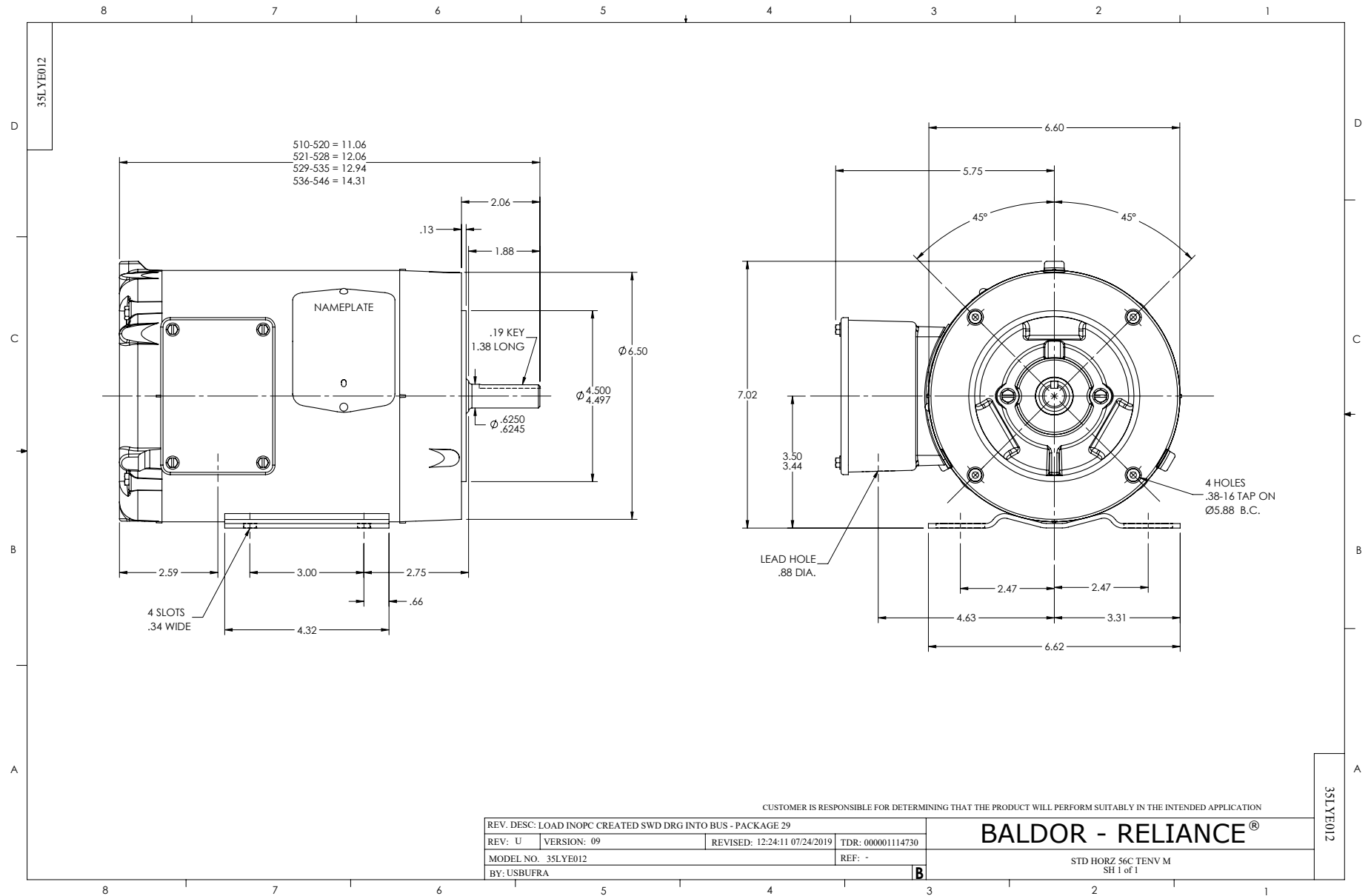
0.25 HP 3 PH 60 HZ 1140 RPM 460 V 3516M

Typical performance - not guaranteed values.

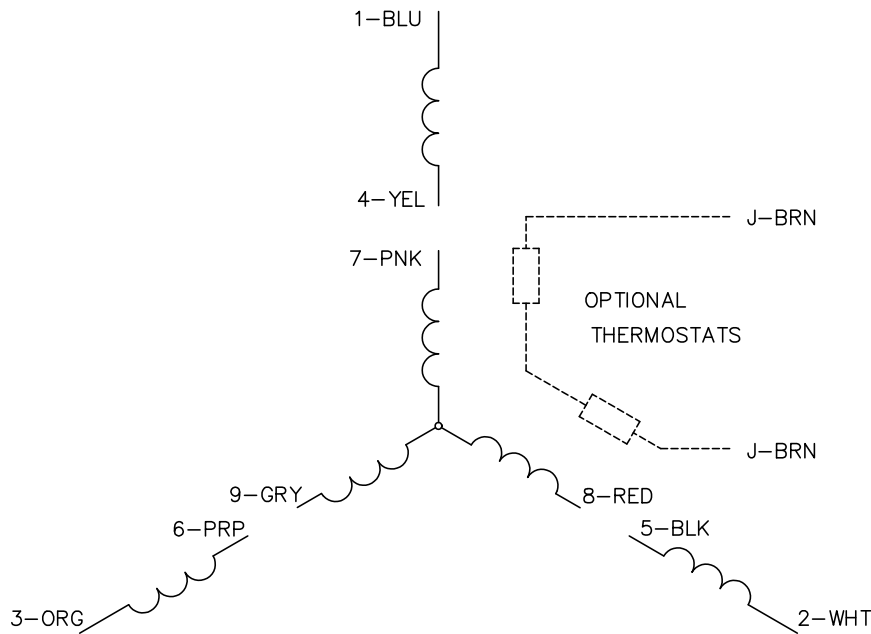
TORQUES (LB-FT) : PO=5.4 PU=2 LR=3 LRA=2.9



1/13/2021 ACPERF, record # 61813



CD0005



LOW VOLTAGE
(2Y)



LINE

HIGH VOLTAGE
(1Y)



LINE

NOTES:

1. INTERCHANGE ANY TWO LINE LEADS TO REVERSE ROTATION.
2. OPTIONAL THERMOSTATS ARE PROVIDED WHEN SPECIFIED.
3. ACTUAL NUMBER OF INTERNAL PARALLEL CIRCUITS MAY BE A MULTIPLE OF THOSE SHOWN ABOVE.
4. LEAD COLORS ARE OPTIONAL. LEADS MUST ALWAYS BE NUMBERED AS SHOWN.

REV. DESC: REVISE TO SHOW OPTIONAL COLORS			
REV. LTR: E	BY: JLP	REVISED: 01/19/99 10:15	TDR: 0171435
S00000		FILE: AAA00005140	MDL: -
		MTL: -	

BALDOR ELECTRIC Co.

3PH, DV, 9 LEADS

CD0005