



Customer information packet

CEM3660T

3HP, 3470RPM, 3PH, 60HZ, 182TC, 0620M, TEFC, F1

ELECTRIC MOTOR WHOLESAL.COM

Class - None

Division - Not Applicable

Specifications

| | |
|--------------------------------|---|
| Enclosure | TEFC |
| Frame | 182TC |
| Frame Material | Iron |
| Frequency | 60.00 Hz |
| Output @ Frequency | 3.000 HP @ 60 HZ |
| Phase | 3 |
| Synchronous Speed @ Frequency | 3600 RPM @ 60 HZ |
| Voltage @ Frequency | 460.0 V @ 60 HZ 230.0 V @ 60 HZ |
| XP Class and Group | None |
| XP Division | Not Applicable |
| Agency Approvals | CSA CSA EEV UR |
| Ambient Temperature | 40 °C |
| Auxillary Box | No Auxillary Box |
| Auxillary Box Lead Termination | None |
| Base Indicator | Rigid |
| Bearing Grease Type | Polyrex EM (-20F +300F) |
| Blower | None |
| Current @ Voltage | 3.800 A @ 460.0 V 7.600 A @ 230.0 V 8.200 A @ 208.0 V |
| Design Code | B |
| Drip Cover | No Drip Cover |
| Duty Rating | CONT |
| Efficiency @ 100% Load | 86.5 % |
| Electrically Isolated Bearing | Not Electrically Isolated |
| Feedback Device | NO FEEDBACK |
| Front Face Code | Standard |
| Front Shaft Indicator | None |
| Heater Indicator | No Heater |

Part detail

| | |
|--------------|------------|
| Revision | D |
| Type | AC |
| Mech. spec. | 06F057 |
| Base | |
| Status | PRD/A |
| Elec. spec. | 06WGY471 |
| Layout | 06LYF057 |
| Eff. date | 03-28-2018 |
| CD Diagram | CD0005 |
| Poles | 02 |
| Leads | 9#16 |
| Proprietary | False |
| Created date | 01-21-2016 |

| | |
|-------------------------------|-----------------------|
| High Voltage Full Load Amps | 3.8 a |
| Insulation Class | F |
| Inverter Code | Inverter Ready |
| KVA Code | K |
| Lifting Lugs | Standard Lifting Lugs |
| Locked Bearing Indicator | Locked Bearing |
| Motor Lead Exit | Ko Box |
| Motor Lead Quantity/Wire Size | 9 @ 16 AWG |
| Motor Lead Termination | Flying Leads |
| Motor Standards | NEMA |
| Motor Type | 0618M |
| Mounting Arrangement | F1 |
| Number of Poles | 2 |
| Overall Length | 16.00 IN |
| Power Factor | 89 |
| Product Family | General Purpose |
| Pulley End Bearing Type | Ball |
| Pulley Face Code | C-Face |
| Pulley Shaft Indicator | Standard |
| Rodent Screen | None |
| RoHS Status | ROHS COMPLIANT |
| Service Factor | 1.15 |
| Shaft Diameter | 1.125 IN |
| Shaft Extension Location | Pulley End |
| Shaft Ground Indicator | No Shaft Grounding |
| Shaft Rotation | Reversible |
| Shaft Slinger Indicator | No Slinger |
| Speed | 3470 rpm |
| Speed Code | Single Speed |
| Starting Method | Direct on line |
| Thermal Device - Bearing | None |
| Thermal Device - Winding | None |
| Vibration Sensor Indicator | No Vibration Sensor |
| Winding Thermal 1 | None |

Winding Thermal 2

None

Nameplate

| NP1259L | | | | | | | | | | |
|---------------------|--------------|-----------------------|------|------------|---|-----------|---|-----|--|--|
| CAT.NO. | CEM3660T | | | | | | | | | |
| SPEC. | 06F057Y471G1 | | | | | | | | | |
| HP | 3 | | | | | | | | | |
| VOLTS | 230/460 | | | | | | | | | |
| AMP | 7.6/3.8 | | | | | | | | | |
| RPM | 3470 | | | | | | | | | |
| FRAME | 182TC | HZ | 60 | PH | 3 | | | | | |
| SER.F. | 1.15 | CODE | K | DES | B | CL | F | | | |
| NEMA-NOM-EFF | 86.5 | PF | 89 | | | | | | | |
| RATING | 40C AMB-CONT | | | | | | | | | |
| CC | 010A | USABLE AT 208V | | | | | | 8.2 | | |
| DE | 6206 | ODE | 6205 | | | | | | | |
| ENCL | TEFC | SN | | | | | | | | |

Parts list

| Part number | Description | Quantity |
|-------------|--|----------|
| SA314382 | SA 06F057Y471G1 | 1.000 ea |
| RA301862 | RA 06F057Y471G1 | 1.000 ea |
| 34FN3002B02 | EXTERNAL FAN, PLASTIC, .905/.907 HUB W/ | 1.000 ea |
| HW3201A05 | 3/8-16 EYEBOLT | 1.000 ea |
| 06CB3000 | BALDOR CONDUIT BOX CAST | 1.000 ea |
| 06GS1000 | GASKET,CONDUIT BOX | 1.000 ea |
| 51XW2520A12 | SCREW, HEX SER SLT HD, ZN, 1/4-20 X .75 | 2.000 ea |
| 11XW1032G06 | 10-32 X .38, TAPTITE II, HEX WSHR SLTD U | 1.000 ea |
| HW3001B01 | BRASS CUP WASHER, FOR #10 SCREW | 1.000 ea |
| 36FE1101A21 | FREP ASSEMBLY FOR ROUTING PURPOSES | 1.000 ea |
| HW4500A01 | 1641B(ALEMITE)400 UNIV, GREASE FITT | 1.000 ea |
| HW4500A17 | 317400 ALEMITE GREASE RELIEF | 1.000 ea |
| HW5100A05 | WVY WSHR F/205 & 304 BRGS | 1.000 ea |
| 36PE1300A13 | PU ENDPLATE, FOR ROUTING PURPOSES | 1.000 ea |
| HW4500A01 | 1641B(ALEMITE)400 UNIV, GREASE FITT | 1.000 ea |
| HW4500A17 | 317400 ALEMITE GREASE RELIEF | 1.000 ea |
| 10XN2520A26 | 1/4-20X 1 5/8 HEX HD | 4.000 ea |
| HW1001A25 | LOCKWASHER 1/4, ZINC PLT .493 OD, .255 I | 4.000 ea |
| HA3101A34 | THRUBOLT- 1/4-20 X 10.375 | 4.000 ea |
| 51XB1214A16 | 12-14X1.00 HXWSSLD SERTYB | 1.000 ea |
| 36FH4009A31 | IEC FH W/GREASER & SPL NOTCH, W/ PRIMER | 1.000 ea |
| 51XW1032A06 | 10-32 X .38, TAPTITE II, HEX WSHR SLTD S | 3.000 ea |
| 06CB3500 | BALDOR CONDUIT BOX LID | 1.000 ea |
| 06GS1001 | BALDOR CONDUIT BOX GASKET | 1.000 ea |
| 51XW2520A12 | .25-20 X .75, TAPTITE II, HEX WSHR SLTD | 2.000 ea |
| HW2501E16 | KEY, 1/4 SQ X 1.750 | 1.000 ea |
| HA7000A02 | KEY RETAINER RING, 1 1/8 DIA, 1 3/8 DIA | 1.000 ea |
| 85XU0407S04 | 4X1/4 U DRIVE PIN STAINLESS | 2.000 ea |
| LB1115N | LABEL,LIFTING DEVICE (ON ROLLS) | 1.000 ea |
| MJ1000A02 | GREASE, MOBIL POLYREX EM - 124047 | 0.050 lb |
| MG1000Y03 | MUNSELL 2.53Y 6.70/ 4.60, GLOSS 20, | 0.028 ga |

| | | |
|-----------|--|----------|
| LC0005E01 | CONN.DIA./WARNING LABEL (LC0005/LB1119N) | 1.000 ea |
| NP1259L | ALUM SUPER-E UL CSA-EEV CC NEMA PREMIUM | 1.000 ea |
| 36PA1001 | PKG GRP, PRINT PK1017A06 | 1.000 ea |
| MN416A01 | TAG-INSTAL-MAINT no wire (1200/bx) 3/19 | 1.000 ea |

AC Induction Motor Performance Data

Record # 55359

Typical performance - not guaranteed values

| Winding: 06WGY471-R001 | | Type: 0618M | | Enclosure: TEFC | |
|-------------------------------|--------------------------|----------------------------|--|---------------------------|--|
| Nameplate Data | | | 460 V, 60 Hz: High Voltage Connection | | |
| Rated Output (HP) | 3 | Full Load Torque | 4.51 LB-FT | | |
| Volts | 230/460 | Start Configuration | direct on line | | |
| Full Load Amps | 7.6/3.8 | Breakdown Torque | 25.5 LB-FT | | |
| R.P.M. | 3470 | Pull-up Torque | 9.08 LB-FT | | |
| Hz | 60 Phase | 3 | Locked-rotor Torque | 11.9 LB-FT | |
| NEMA Design Code | B KVA Code | K | Starting Current | 29.3 A | |
| Service Factor (S.F.) | | 1.15 | No-load Current | 1.64 A | |
| NEMA Nom. Eff. | 86.5 Power Factor | 89 | Line-line Res. @ 25°C | 6.11 Ω | |
| Rating - Duty | 40C AMB-CONT | | Temp. Rise @ Rated Load | 45°C | |
| S.F. Amps | | | Temp. Rise @ S.F. Load | 48°C | |
| | | | Locked-rotor Power Factor | 58.7 | |
| | | | Rotor inertia | 0.0795 LB-FT ² | |

Load Characteristics 460 V, 60 Hz, 3 HP

| % of Rated Load | 25 | 50 | 75 | 100 | 125 | 150 | S.F. |
|------------------------|-----------|-----------|-----------|------------|------------|------------|-------------|
| Power Factor | 47 | 70 | 81 | 87 | 90 | 91 | 90 |
| Efficiency | 81.1 | 86.6 | 87.5 | 86.7 | 85.3 | 83.2 | 87.6 |
| Speed | 3568 | 3538 | 3505 | 3468 | 3430 | 3382 | 3456 |
| Line amperes | 1.82 | 2.29 | 2.94 | 3.71 | 4.53 | 5.5 | 4.12 |

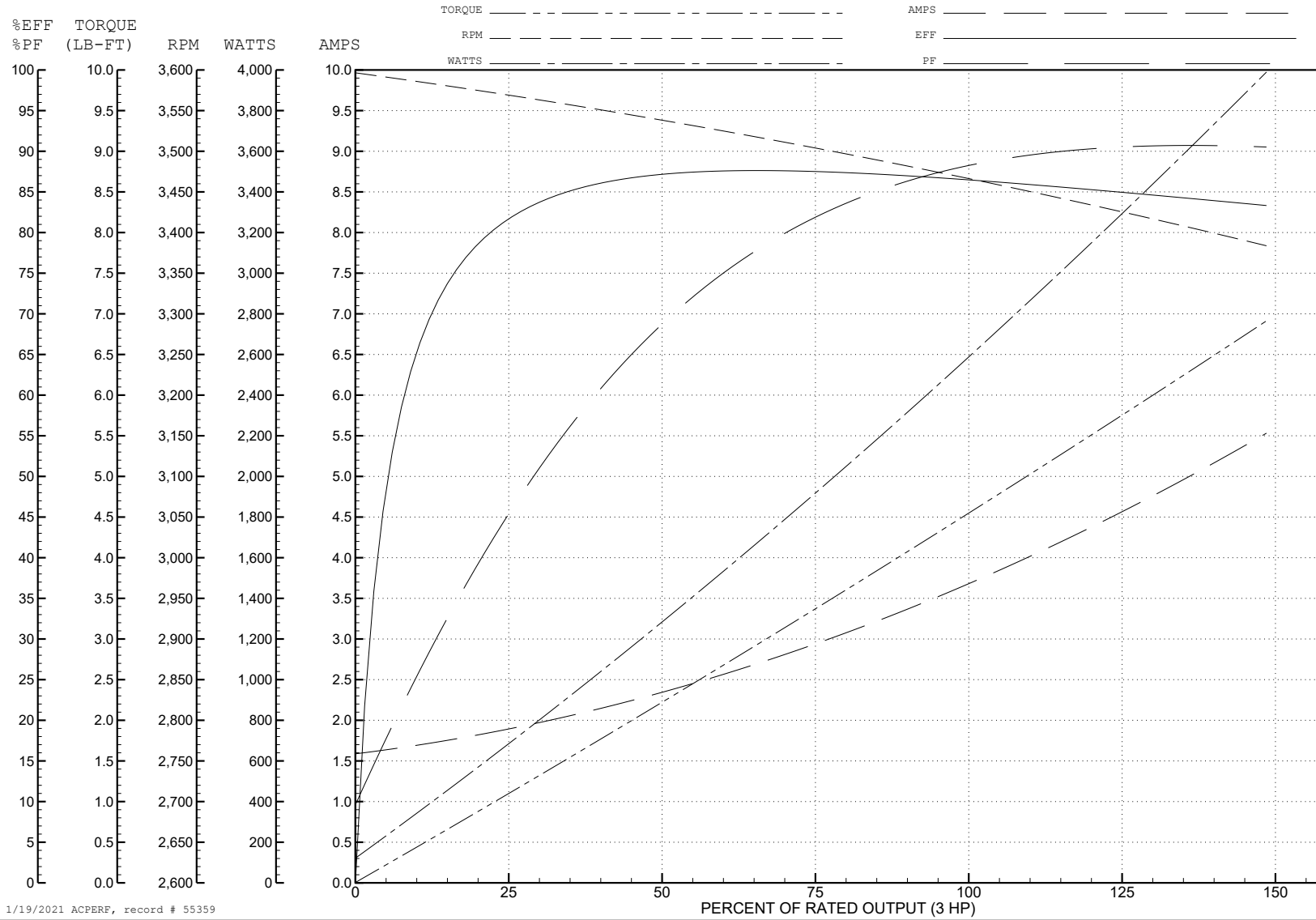
ABB Motors and Mechanical Inc.

WINDING # 06WGY471

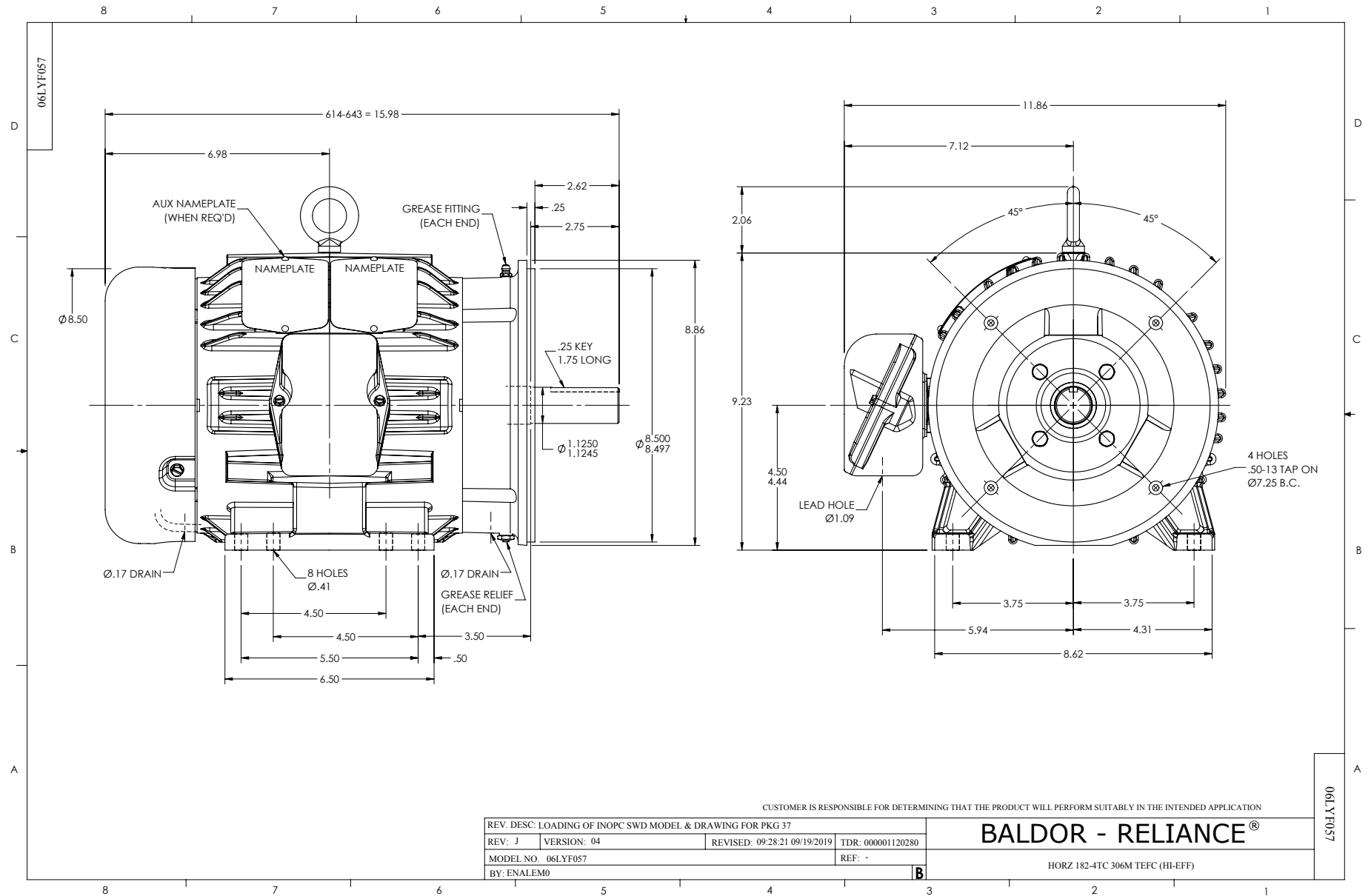
3 HP 3 PH 60 HZ 3470 RPM 460 V 0618M

Typical performance - not guaranteed values.

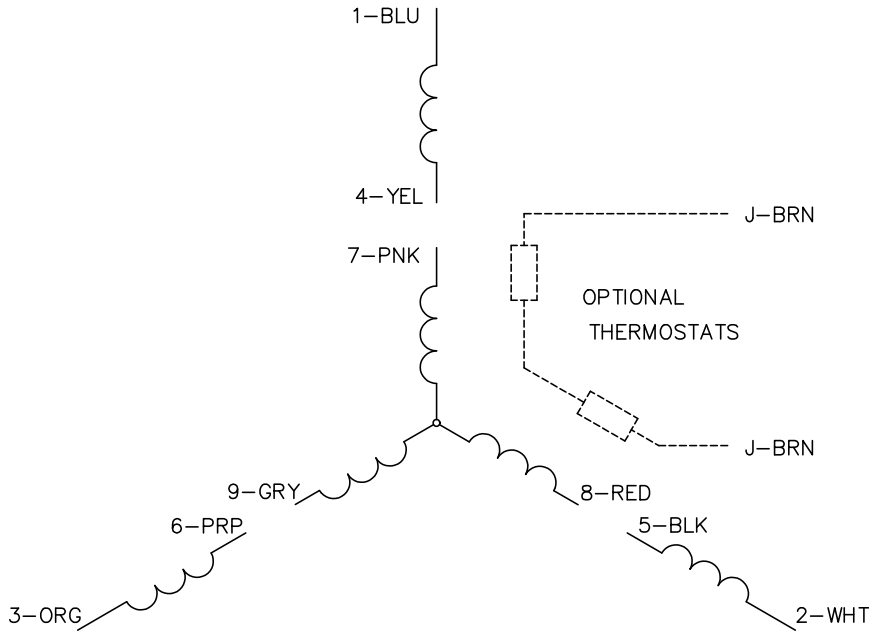
TORQUES (LB-FT): PO=25.5 PU=9.08 LR=11.9 LRA=29.3



1/19/2021 ACPERF, record # 55359



CD0005

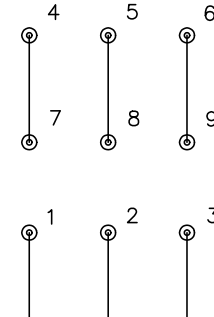


LOW VOLTAGE
(2Y)



LINE

HIGH VOLTAGE
(1Y)



LINE

NOTES:

1. INTERCHANGE ANY TWO LINE LEADS TO REVERSE ROTATION.
2. OPTIONAL THERMOSTATS ARE PROVIDED WHEN SPECIFIED.
3. ACTUAL NUMBER OF INTERNAL PARALLEL CIRCUITS MAY BE A MULTIPLE OF THOSE SHOWN ABOVE.
4. LEAD COLORS ARE OPTIONAL. LEADS MUST ALWAYS BE NUMBERED AS SHOWN.

CD0005

| | | | |
|---|---------|-------------------------|--------------|
| REV. DESC: REVISE TO SHOW OPTIONAL COLORS | | | |
| REV. LTR: E | BY: JLP | REVISED: 01/19/99 10:15 | TDR: 0171435 |
| S00000 | | FILE: AAA00005140 | MDL: - |
| | | MTL: - | |

BALDOR ELECTRIC Co.

3PH, DV, 9 LEADS