



Customer information packet

CEM3558T

2HP, 1755RPM, 3PH, 60HZ, 145TC, 3530M, TEFC, F1

ELECTRIC MOTOR WHOLESALE.COM

Class - None

Division - Not Applicable

Specifications

Enclosure	TEFC
Frame	145TC
Frame Material	Steel
Frequency	60.00 Hz
Output @ Frequency	2.000 HP @ 60 HZ
Phase	3
Synchronous Speed @ Frequency	1800 RPM @ 60 HZ
Voltage @ Frequency	460.0 V @ 60 HZ 230.0 V @ 60 HZ
XP Class and Group	None
XP Division	Not Applicable
Agency Approvals	CSA CSA EEV UR
Ambient Temperature	40 °C
Auxillary Box	No Auxillary Box
Auxillary Box Lead Termination	None
Base Indicator	Rigid
Bearing Grease Type	Polyrex EM (-20F +300F)
Blower	None
Current @ Voltage	2.900 A @ 460.0 V 5.800 A @ 230.0 V 6.000 A @ 208.0 V
Design Code	B
Drip Cover	No Drip Cover
Duty Rating	CONT
Efficiency @ 100% Load	86.5 %
Electrically Isolated Bearing	Not Electrically Isolated
Feedback Device	NO FEEDBACK
Front Face Code	Standard
Front Shaft Indicator	None
Heater Indicator	No Heater

Part detail

Revision	P
Type	AC
Mech. spec.	35AA002
Base	
Status	PRD/A
Elec. spec.	35WGM494
Layout	35LYAA002
Eff. date	03-13-2018
CD Diagram	CD0005
Poles	04
Leads	9#18
Proprietary	False
Created date	08-04-2010

High Voltage Full Load Amps	2.9 a
Insulation Class	F
Inverter Code	Inverter Ready
KVA Code	L
Lifting Lugs	No Lifting Lugs
Locked Bearing Indicator	Locked Bearing
Motor Lead Exit	Ko Box
Motor Lead Quantity/Wire Size	9 @ 18 AWG
Motor Lead Termination	Flying Leads
Motor Standards	NEMA
Motor Type	3530M
Mounting Arrangement	F1
Number of Poles	4
Overall Length	14.17 IN
Power Factor	73
Product Family	General Purpose
Pulley End Bearing Type	Ball
Pulley Face Code	C-Face
Pulley Shaft Indicator	Standard
Rodent Screen	None
Service Factor	1.15
Shaft Diameter	0.875 IN
Shaft Extension Location	Pulley End
Shaft Ground Indicator	No Shaft Grounding
Shaft Rotation	Reversible
Shaft Slinger Indicator	No Slinger
Speed	1755 rpm
Speed Code	Single Speed
Starting Method	Direct on line
Thermal Device - Bearing	None
Thermal Device - Winding	None
Vibration Sensor Indicator	No Vibration Sensor
Winding Thermal 1	None
Winding Thermal 2	None

Nameplate

NP3441LUA

CAT.NO.	CEM3558T						
SPEC	35AA002M494G1						
HP	2						
VOLTS	230/460						
AMPS	5.8/2.9						
RPM	1755						
FRAME	145TC	HZ	60	PH	3		
SF	1.15	CODE	L	DES	B	CLASS	F
NEMA NOM. EFF	86.5	PF	73				
RATING	40C AMB-CONT						
CC	010A	USABLE AT 208V				6	
ENCL	TEFC	SER					
DE	6205	ODE	6203				
VPWM INVERTER READY							
CT6-60H(10:1)VT3-60H(20:1	50Hz 2HP 190/380V 6.8/3.4A						SF1.0

Parts list

Part number	Description	Quantity
SA201001	SA 35AA002M494G1	1.000 ea
RA188306	RA 35AA002M494G1	1.000 ea
34FN3002B01	EXTERNAL FAN, PLASTIC, .637/.639 HUB W/	1.000 ea
NS2512A01	INSULATOR, CONDUIT BOX X	1.000 ea
35CB3009	35 CB W/1.09 DIA. LEAD HOLE @ 6:	1.000 ea
36GS1000SP	GASKET-CONDUIT BOX, .06 THICK #SV-330 LE	1.000 ea
51XB1016A07	10-16 X 7/16 HXWSSLD SERTYB	2.000 ea
11XW1032G06	10-32 X .38, TAPTITE II, HEX WSHR SLTD U	1.000 ea
35EP3122A00	MASTER ODE,203 BRG,.683SH,#26 DRN,GRSR,F	1.000 ea
HW4500A01	1641B(ALEMITE)400 UNIV, GREASE FITT	1.000 ea
HW5100A03	WAVY WASHER (W1543-017)	1.000 ea
35EP3307D00	MASTER DE,205 BRG,.998SH,#26 DRN,GRSR	1.000 ea
HW4500A01	1641B(ALEMITE)400 UNIV, GREASE FITT	1.000 ea
51XN1032A20	10-32 X 1 1/4 HX WS SL SR	2.000 ea
51XB1214A16	12-14X1.00 HXWSSLD SERTYB	1.000 ea
35FH4005A84SP	IEC FH W/GRSR, NO DIMPLES PRIMED	1.000 ea
51XW1032A06	10-32 X .38, TAPTITE II, HEX WSHR SLTD S	3.000 ea
35CB4521GX	CONDUIT BOX LID KIT **ORDER INDIV PARTS	1.000 ea
51XW0832A07	8-32 X .44, TAPTITE II, HEX WSHR SLTD SE	4.000 ea
HW2501D13	KEY, 3/16 SQ X 1.375	1.000 ea
HA7000A01	KEY RETAINER 7/8" DIA SHAFT	1.000 ea
85XU0407S04	4X1/4 U DRIVE PIN STAINLESS	2.000 ea
MJ1000A02	GREASE, MOBIL POLYREX EM - 124047	0.050 lb
MG1000Y03	MUNSELL 2.53Y 6.70/ 4.60, GLOSS 20,	0.017 ga
HA3100A18	THRUBOLT 10-32 X 9.250	4.000 ea
LC0005E01	CONN.DIA./WARNING LABEL (LC0005/LB1119N)	1.000 ea
NP3441LUA	ALUM SUPER-E VPWM INV READY UL CSA-EEV C	1.000 ea
36PA1000	PKG GRP, PRINT PK1016A06	1.000 ea
MN416A01	TAG-INSTAL-MAINT no wire (1200/bx) 3/19	1.000 ea
PE-0000001	ZRTG PE ASSEMBLY	1.000 ea
FE-0000001	ZRTG FE ASSEMBLY	1.000 ea

AC Induction Motor Performance Data

Record # 53333

Typical performance - not guaranteed values

Winding: 35WGM494-R078		Type: 3530M	Enclosure: TEFC	
Nameplate Data			460 V, 60 Hz: High Voltage Connection	
Rated Output (HP)	2	Full Load Torque	5.99 LB-FT	
Volts	230/460	Start Configuration	direct on line	
Full Load Amps	5.8/2.9	Breakdown Torque	23.9 LB-FT	
R.P.M.	1755	Pull-up Torque	15.9 LB-FT	
Hz	60 Phase	Locked-rotor Torque	18.1 LB-FT	
NEMA Design Code	B KVA Code	Starting Current	24.3 A	
Service Factor (S.F.)	1.15	No-load Current	1.82 A	
NEMA Nom. Eff.	86.5 Power Factor	Line-line Res. @ 25°C	7.46 Ω	
Rating - Duty	40C AMB-CONT	Temp. Rise @ Rated Load	61°C	
S.F. Amps		Temp. Rise @ S.F. Load	74°C	
		Locked-rotor Power Factor	50	
		Rotor inertia	0.177 LB-FT ²	

Load Characteristics 460 V, 60 Hz, 2 HP

% of Rated Load	25	50	75	100	125	150	S.F.
Power Factor	32	51	64	73	79	82	77
Efficiency	75.7	84.2	86.4	87.3	86.2	85.1	86.4
Speed	1788.5	1778	1766.7	1754.5	1740.8	1726.6	1746
Line amperes	1.92	2.17	2.51	2.94	3.46	4.01	3.25

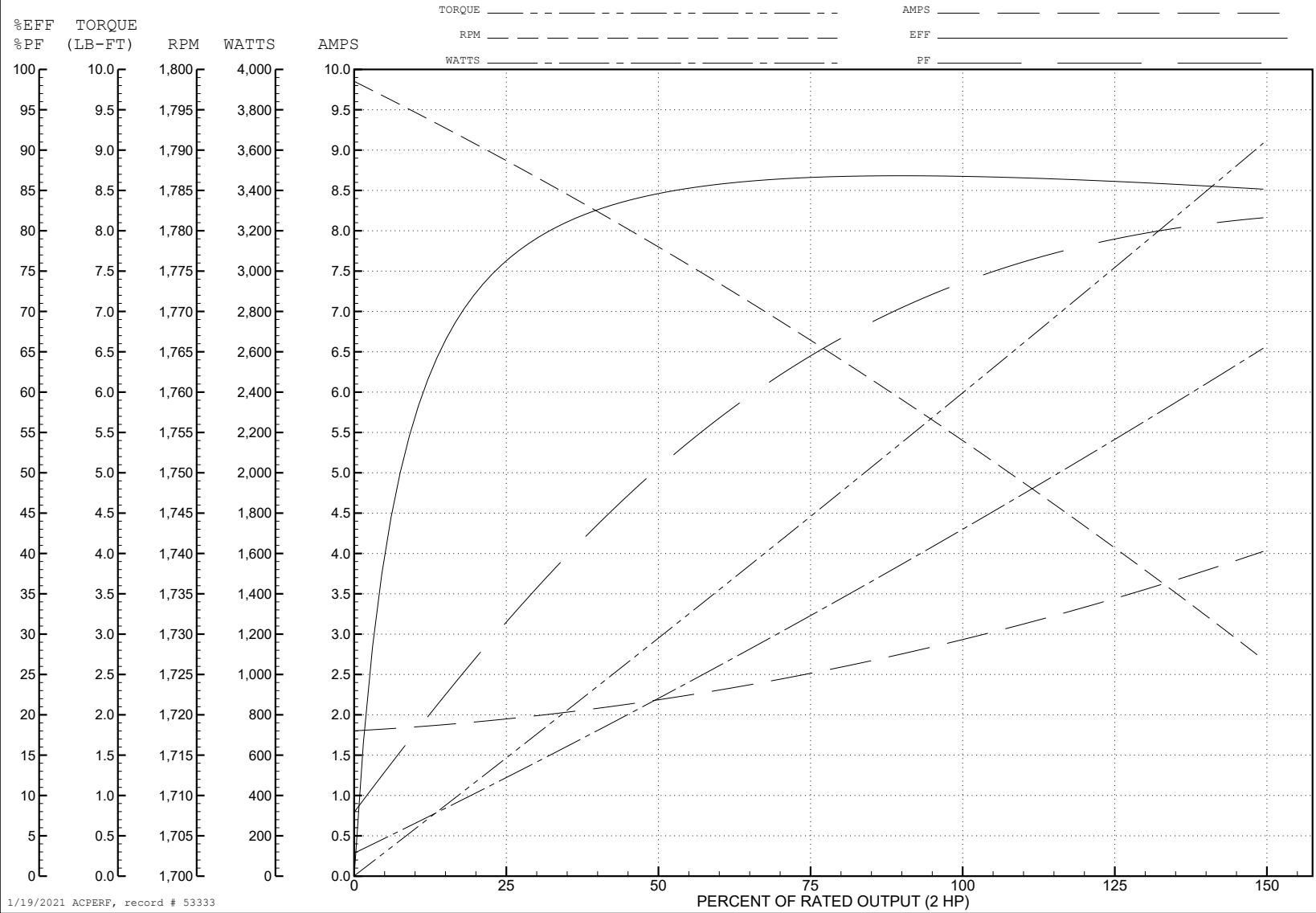
ABB Motors and Mechanical Inc.

WINDING # 35WGM494

Typical performance - not guaranteed values.

2 HP 3 PH 60 HZ 1755 RPM 460 V 3530M

TORQUES (LB-FT): PO=23.9 PU=15.9 LR=18.1 LRA=24.3



1/19/2021 ACPERF, record # 53333

AC Induction Motor Performance Data

Record # 64712

Typical performance - not guaranteed values

Winding: 35WGM494-R078		Type: 3530M	Enclosure: TEFC	
Nameplate Data			230 V, 60 Hz: Low Voltage Connection	
Rated Output (HP)		2	Full Load Torque	5.99 LB-FT
Volts		230/460	Start Configuration	direct on line
Full Load Amps		5.8/2.9	Breakdown Torque	23.9 LB-FT
R.P.M.		1755	Pull-up Torque	15.9 LB-FT
Hz	60 Phase	3	Locked-rotor Torque	18.1 LB-FT
NEMA Design Code	B KVA Code	L	Starting Current	48.6 A
Service Factor (S.F.)		1.15	No-load Current	3.64 A
NEMA Nom. Eff.	86.5 Power Factor	73	Line-line Res. @ 25°C	1.75 Ω
Rating - Duty		40C AMB-CONT	Temp. Rise @ Rated Load	61°C
S.F. Amps			Temp. Rise @ S.F. Load	72°C
			Locked-rotor Power Factor	50.1
			Rotor inertia	0.177 LB-FT ²

Load Characteristics 230 V, 60 Hz, 2 HP

% of Rated Load	25	50	75	100	125	150	S.F.
Power Factor	32	51	64	73	79	82	77
Efficiency	75.4	84	86.4	87.2	86.1	85	86.5
Speed	1789	1778	1767	1755	1741	1727	1747
Line amperes	3.84	4.34	5.02	5.88	6.92	8.02	6.5

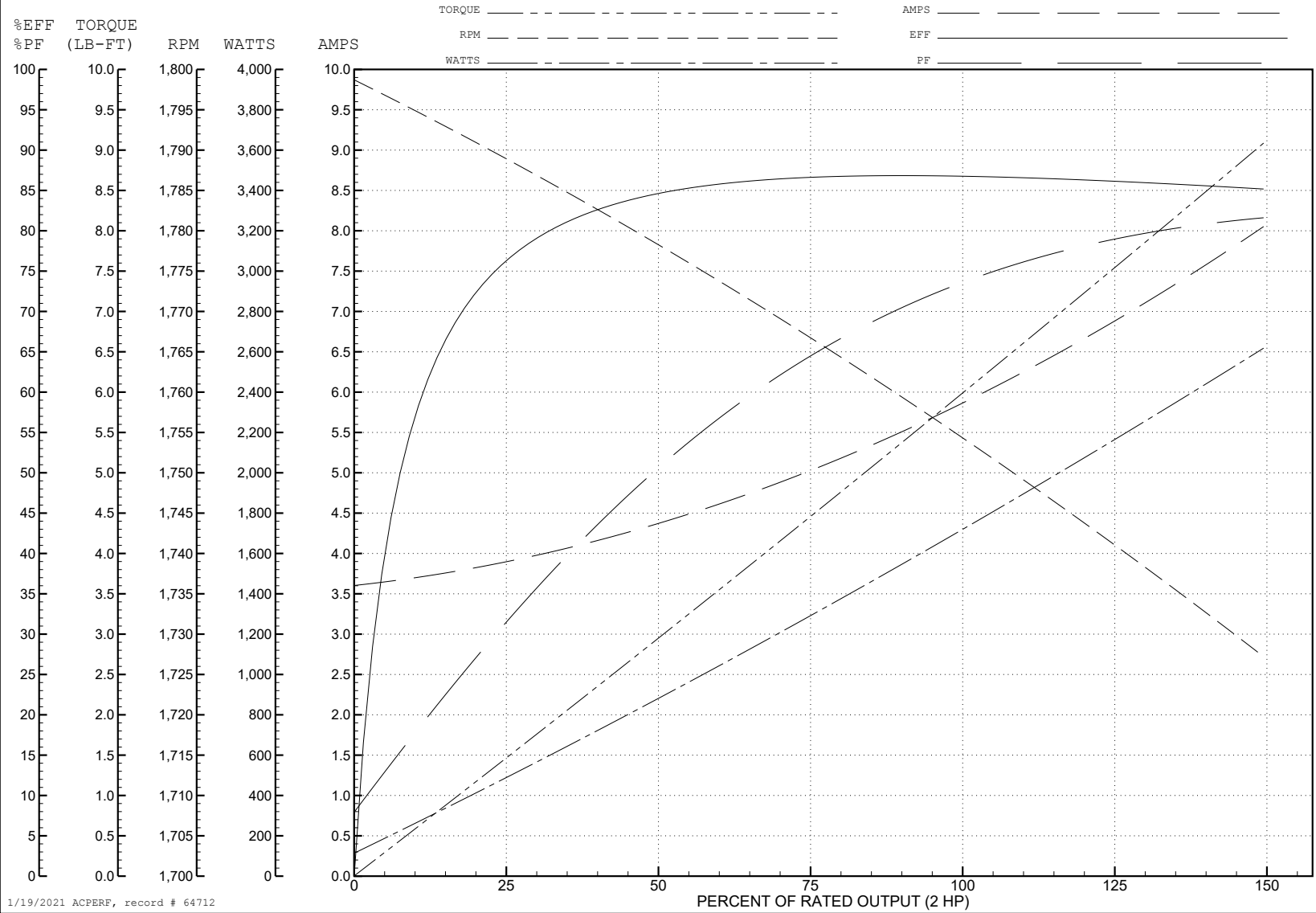
ABB Motors and Mechanical Inc.

WINDING # 35WGM494

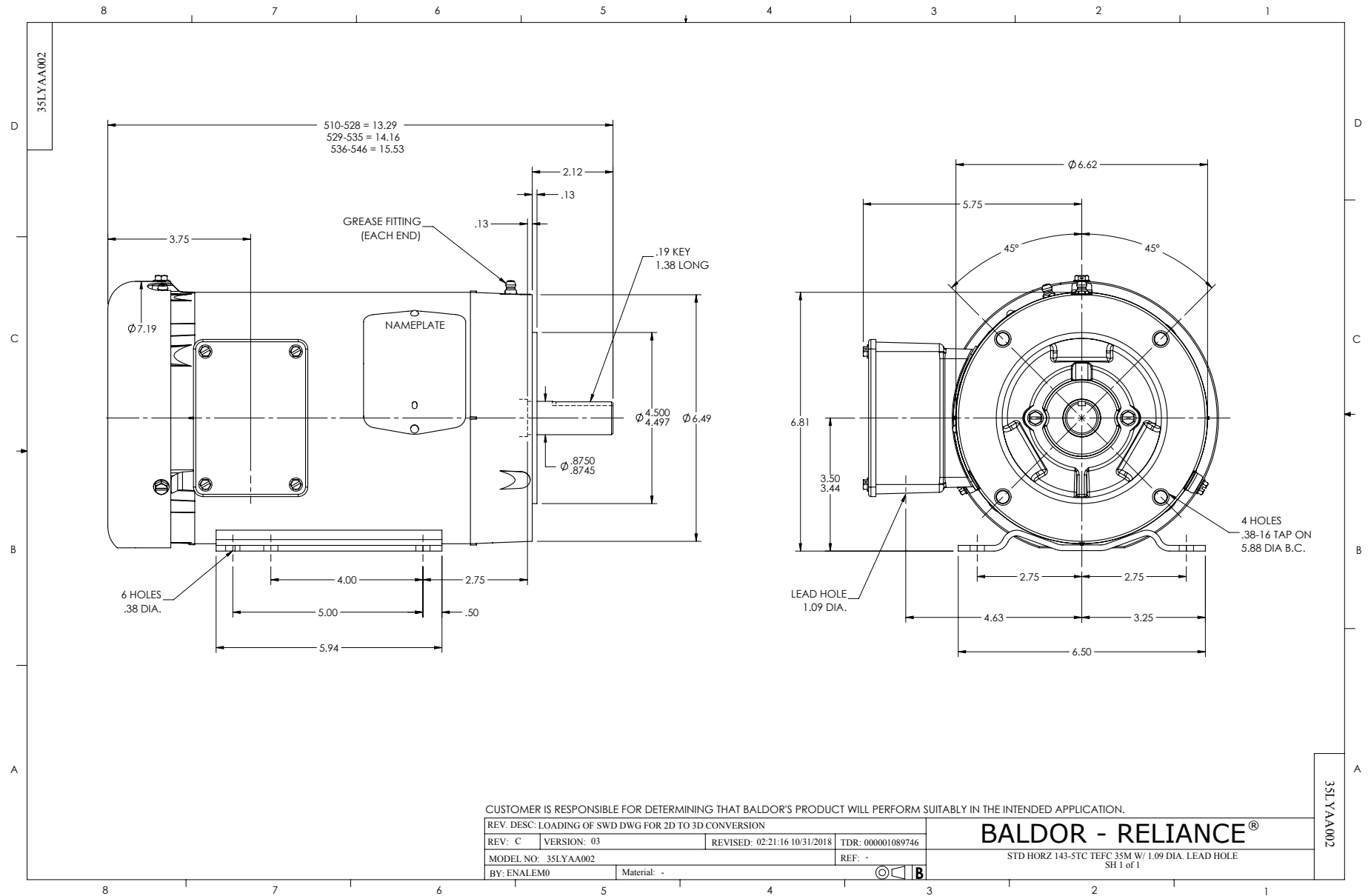
Typical performance - not guaranteed values.

2 HP 3 PH 60 HZ 1755 RPM 230 V 3530M

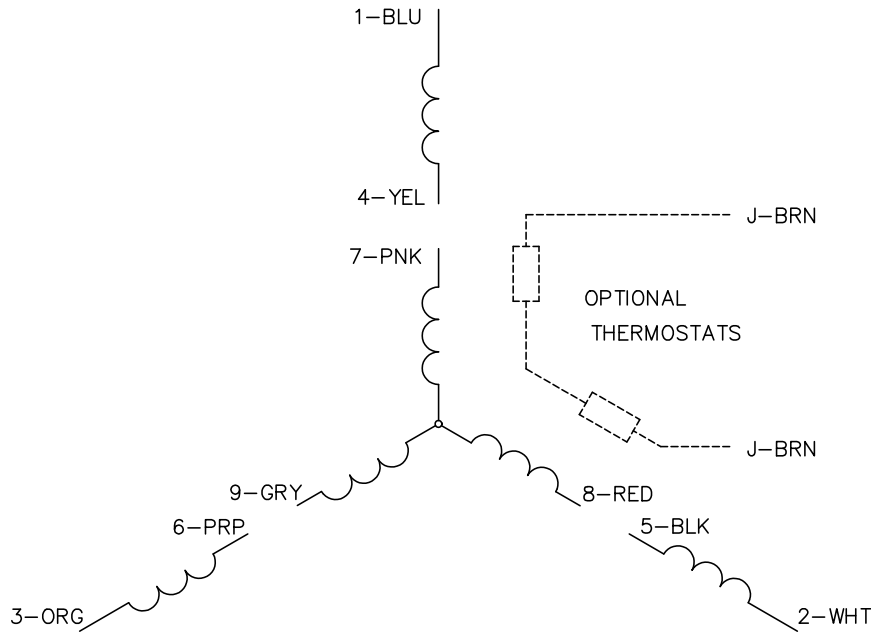
TORQUES (LB-FT): PO=23.9 PU=15.9 LR=18.1 LRA=48.6



1/19/2021 ACPERF, record # 64712



CD0005



LOW VOLTAGE
(2Y)



LINE

HIGH VOLTAGE
(1Y)



LINE

NOTES:

1. INTERCHANGE ANY TWO LINE LEADS TO REVERSE ROTATION.
2. OPTIONAL THERMOSTATS ARE PROVIDED WHEN SPECIFIED.
3. ACTUAL NUMBER OF INTERNAL PARALLEL CIRCUITS MAY BE A MULTIPLE OF THOSE SHOWN ABOVE.
4. LEAD COLORS ARE OPTIONAL. LEADS MUST ALWAYS BE NUMBERED AS SHOWN.

REV. DESC: REVISE TO SHOW OPTIONAL COLORS			
REV. LTR: E	BY: JLP	REVISED: 01/19/99 10:15	TDR: 0171435
S00000		FILE: AAA00005140	MDL: -
		MTL: -	

BALDOR ELECTRIC Co.

3PH, DV, 9 LEADS

CD0005