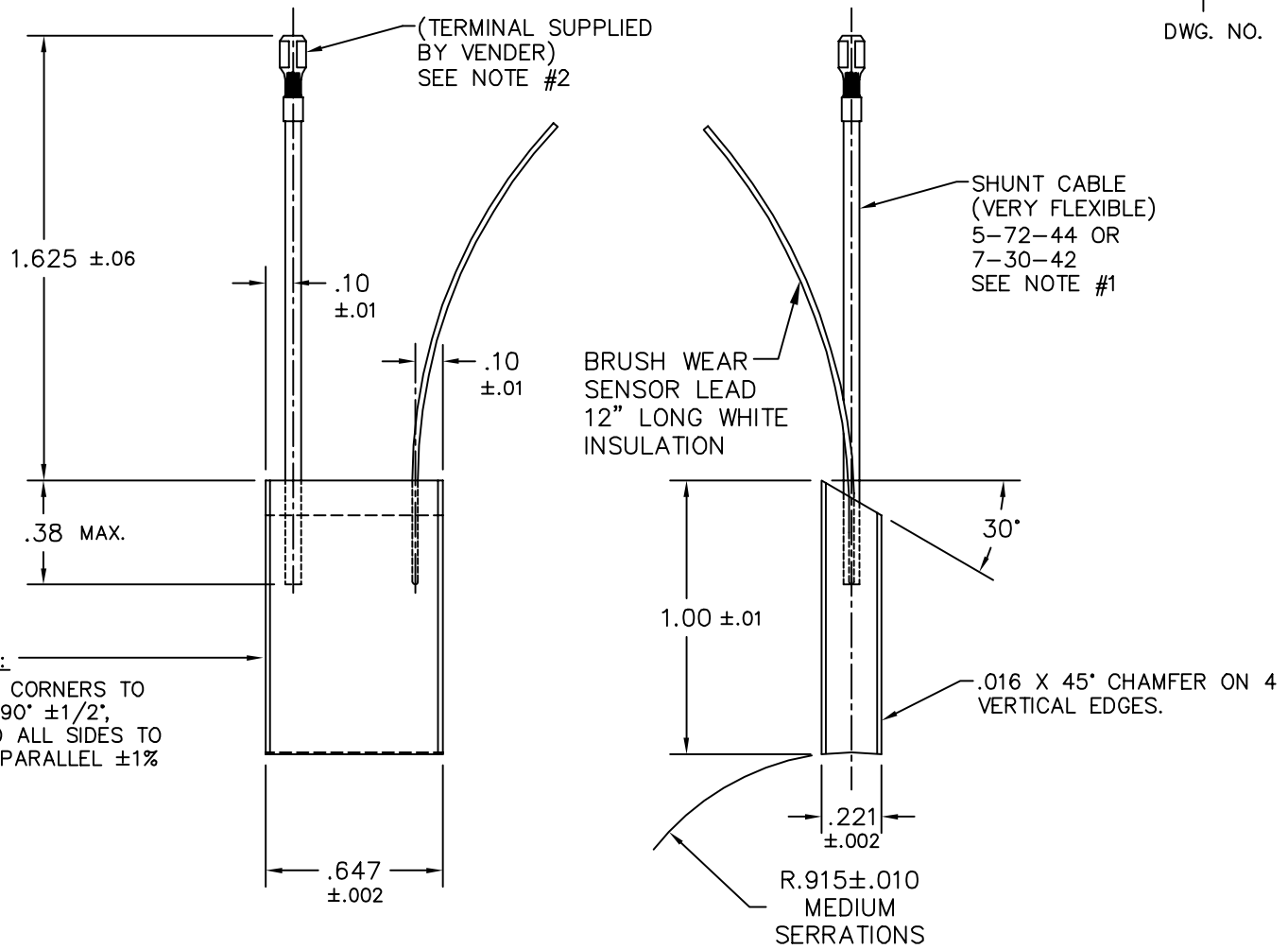
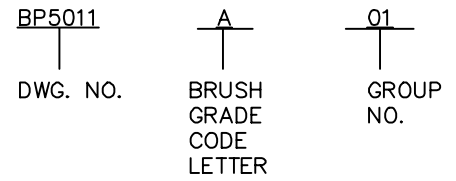


GROUP NO.
01 - WITHOUT SENSOR.
02 - WITH SENSOR.

BP5011

\* FOR ASS'Y. NO. ADD BRUSH GRADE CODE LETTER & GROUP NO. TO DRAWING NO. BP5011.  
EXAMPLE:



NOTE:  
ALL CORNERS TO BE 90° ±1/2°;  
AND ALL SIDES TO BE PARALLEL ±1%

- NOTES:
1. ALTERNATE SHUNT MUST BE APPROVED BY BALDOR.
  2. ARK-LES P/N 3500H109AB-2 STRAIGHT TERMINAL, ALTERNATE HELWIG CARBON P/N 264 187000.0 (FOR .187 \* .020 MALE), OR BALDOR-APPROVED ALTERNATE.
  3. SEALING COMPOUND APPLIED TO THE SHUNT TAMPING MUST NOT STIFFEN THE SHUNT CABLE MORE THAN .30 IN. FROM TOP OF BRUSH.

REV. DESC: ADD P/N TO # 2 NOTE (HELWIG CARBON)		
REV. LTR: L	VERSION: 02	TDR: 00000778697
FILE: \AAA\00006\027	REVISED: 01:23:30 12/20/2012	
MTL: -	BY: ENTROEO	

**BALDOR**

CARBON BRUSH FOR CONSTANT FORCE BRUSH HOLDERS, 33PM MOTORS  
SH 1 of 1

BP5011