

BRUSH ASSEMBLY PART NO.

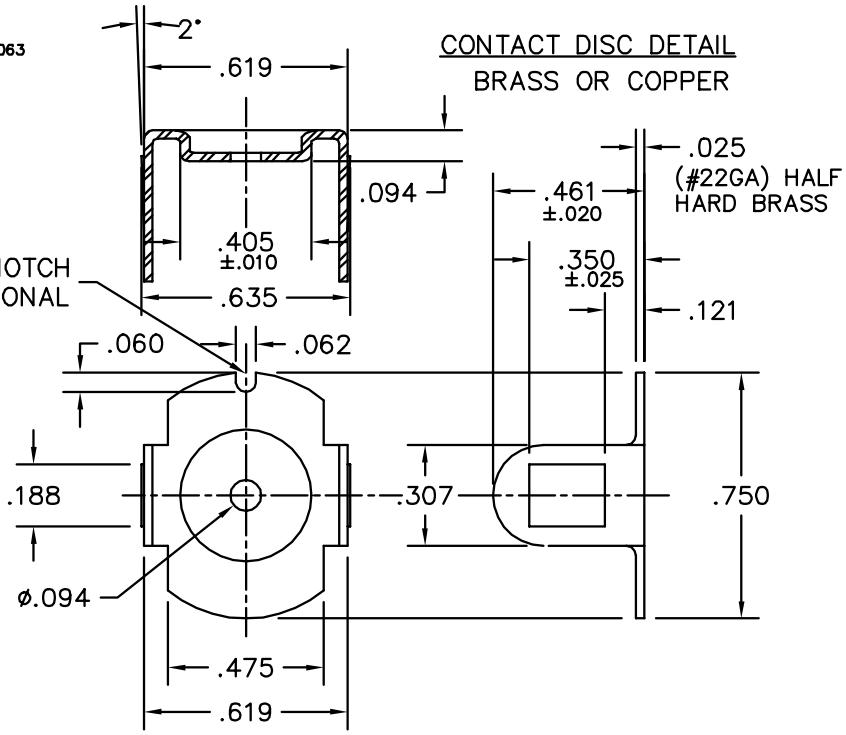
EXAMPLE : BP5000A14

DWG. NO.	BRUSH GRADE	GROUP NO.
BP5000	SEE FAMILY CODE	14

MACH. TOL UNLESS SPEC.	
2 PLC DECIMALS	= ±.020
3 PLC DECIMALS	= ±.005
ANG=±.5° RADII=.015	

SPRING SPECIFICATIONS (REF)	
MATERIAL = AISI 302 SS	WIRE DIA. = .026
ACTIVE TURNS = 11	OUTSIDE DIA. = .458 ±.012
CLOSED TURNS = 4 (2 EA. END)	SPRING RATIO = .614
FREE LENGTH = 2.334 ±10%	SPRING RATE = .644 LB/IN
SOLID LENGTH = .416 MAX	STRESS (MAX) = 74,200 P.S.I.

BRUSH WEAR	
A NEW	= 1.092 LBS @ .639 IN ~ 4.72 P.S.I.
B WORN	= .670 LBS @ 1.293 IN ~ 2.90 P.S.I.



NOTE: SAME AS BP5000-08 EXCEPT MATERIAL TO BE SPLIT & BONDED

REV. DESC: ADD NOTE FOR ALTERNATE SHUNT APPROVAL		
REV. LTR: H	VERSION: 05	TDR: 00000770101
FILE: \AAA\00013\496	REVISED: 09:43:18 10/19/2012	
MTL: SPLIT & BONDED BRUSH	BY: ENJERWO	

BALDOR

CARBON BRUSH ASSEMBLY FOR CARTRIDGE TYPE BRUSH HOLDERS

SH 1 of 1

BP5000-14